



**Board Report**

**File #:** 2015-0651, **File Type:** Oral Report / Presentation

**Agenda Number:** 46.

**CONSTRUCTION COMMITTEE  
JUNE 18, 2015**

RECEIVE oral update on **Engineering and Construction Executive Director's report.**

**DISCUSSION**

Engineering and Construction Executive Director's Oral Report, presented by Bryan Pennington, Executive Director Engineering and Construction.

Monthly Status Report:

**ATTACHMENTS**

Attachment A - Engineering and Construction Executive Director's Report

Prepared by:

- **Crenshaw/LAX** - Charles Beauvoir, Deputy Executive Officer, Project Mgmt., (213)299-3095
- **Regional Connector** - Girish Roy, Deputy Executive Officer, Project Mgmt., (213)893-7119
- **Westside Purple Line Ext 1** - Dennis Mori, EO Project Mgmt., (213)922-7238
- **Westside Purple Line Ext 2** - Dennis Mori, EO Project Mgmt., (213)922-7238
- **I-405** - Michael Barbour, Deputy Executive Director, Transit, (213)922-2261
- **Division 13** - Timothy Lindholm, EO Project Engr., (213)922-7297
- **Patsaouras Plaza Busway Station** - Timothy Lindholm, EO Project Engr., (213)922-7297
- **MRL - MOL North Hollywood Station** - Samuel Mayman, EO Project Engr., (213)922-7289
- **Universal Pedestrian Bridge** - Samuel Mayman, EO Project Engr., (213)922-7289
- **Metro Blue Line Station** - Samuel Mayman, EO Project Engr., (213)922-7289
- **Presentation** - Yohana Jonathan, Departmental System Analyst, (213)922-7592

Reviewed by:

Bryan Pennington, Executive Director, (213)922-7449

---

# Engineering & Construction -- Transit Status Report

## Significant Issues

Presented By

**Bryan Pennington**

Executive Director

Engineering and Construction

# CRENSHAW/LAX TRANSIT PROJECT

## SIGNIFICANT HIGHLIGHTS

- Overall Project 31% complete. Design-builder's design is 89% and construction 15% complete . Discussion underway with Contractor regarding expediting
- Southwestern Yard Contract C0991 approved by Board
- Continuing pile installation for underground guideway No.1 near LAX runways →
- Green Line Connection & Aviation/Century Station – continuing installation of bridge columns & abutment piles
- Vernon Station – Pile installation complete. Commenced two week street decking operation
- MLK Station – Utility support under deck largely complete. Excavation to tier one level continues →
- Expo Station – Tier one strut installation complete and excavation to tier two level continues
- Safety suspension of work notice issued on April 9, 2015. Safety status review held with Metro & WSCC Executives on May 18, 2015. WSCC mitigation efforts under review



June 2015

Construction Committee

Los Angeles County Metropolitan Transportation Authority



# REGIONAL CONNECTOR TRANSIT CORRIDOR

---

## **SIGNIFICANT HIGHLIGHTS**

### **Advance Utility Relocation (AUR)**

- Overall advance utility work is 85% complete
- DWP Power completed intercept work on Flower Street at 6th Street

### **Design Build Contract**

- DB contract 19.4 % complete as of the end of May 2015
- Metro completed review of 85% Design package for Bored Tunnel
- RCC presented 85% design workshop to review 1<sup>st</sup>/Central station design
- Continue preconstruction survey and potholing of existing utilities, and geotechnical investigation of Cross-Over Cavern at 2<sup>nd</sup> & Spring Streets
- Pre-trenching of existing utilities at 1<sup>st</sup>/Central for final design and construction of Support of Excavation (SOE) began in April and has continued through May 2015

# REGIONAL CONNECTOR TRANSIT CORRIDOR

---

## **SIGNIFICANT HIGHLIGHTS**

### **Design Build Contract (continued)**

- Skanska is currently working with 10 of the 11 firms displaced by the AUR contract termination for convenience:
  - They already have subcontracts with 7 of 11 firms for C0980 scope.
  - They are contracting with an additional firm to monitor utility flow to begin June 11, 2015.
  - They have expectations that a firm will be utilized by existing subcontractors as a lower tier subcontractor.
  - They are in discussions with an additional firm for equipment opportunities, additional fencing, and soundwall work for C0980 scope.
  - They have received bids, including from one of the firms, for quality control scope that are under review.

Skanska continues providing weekly information on their outreach to those subcontractors.

- In May RCC submitted and Metro “approved for construction” its first design for the tunnel launch pit on the Mangrove site. Support of Excavation construction began May 26, 2015 by drilling piles at Mangrove site for TBM launching shaft.

# WESTSIDE PURPLE LINE – SECTION 1

---

## **SIGNIFICANT HIGHLIGHTS**

Overall Section 1 Advanced Utility Relocations work is 47% complete.

- The Wilshire/Fairfax Advanced Utility Relocations Contractor is continuing with power and water work, and is on schedule to complete in October 2015.
- The Wilshire/La Cienega Advanced Utility Relocations Contractor continues with the Southern California Edison (SCE) power relocation work along the westbound lanes of Wilshire Boulevard.
- Beverly Hills fiber optics relocations have begun in the Wilshire/La Cienega Station area.

Design-Build is 1% complete.

- The Design/Builder for Tunnels, Stations, Trackwork, Systems and Systems Integration Testing is continuing with final design, design survey along the alignment, geotechnical borings and site preparation work at various construction staging areas.

# WESTSIDE PURPLE LINE – SECTION 2

---

## **SIGNIFICANT HIGHLIGHTS**

- An Industry Review with the prime contracting community was held on June 4, 2015, which provided an overview of the Project to the contracting community.
- The Industry Review focused on the constructability of the Project under a single Design/Build Contract.
- This was followed by a Meet and Greet event with the prime contactors.
- Meetings with prime contractors are scheduled to begin in July 2015.
- Advanced Preliminary Engineering continues to support the advertisement of a Request for Qualifications/Request for Proposal in early September 2015.

# I-405 SEPULVEDA PASS IMPROVEMENTS PROJECT

## SIGNIFICANT HIGHLIGHTS

- Punch list items 99% complete
- Issuance of substantial completion and acceptance by Caltrans is subject to resolution of Kiewit Retaining Wall design issue
- Project is working with Kiewit to settle merited claims, Request for Changes (RFCs), and Provisional Sum Items prior to going to Arbitration
- Project Cost – Project will report to Board staff on road map through final project





# DIVISION 13 BUS O&M FACILITY

## SIGNIFICANT HIGHLIGHTS

- Project 96% Complete
- All major concrete structures are complete and the building was topped out in August 2014
- Primary work at present includes mechanical, electrical, equipment installation, IT, interior finishing, furnishings, and exterior skin
- Solar panel installation on ribbon roof 100% complete
- Public art cube panels 100% installed
- Commissioning of building systems started in May 2015
- Project completion estimated for September 2015



May 2015



June 2015

June 2015

Construction Committee

Los Angeles County Metropolitan Transportation Authority



# PATSAOURAS PLAZA BUSWAY STATION

---

## SIGNIFICANT HIGHLIGHTS

- Project approximately 5% complete, construction start likely to slip to Fall 2015 due to Caltrans right-of way certifications, environmental and permitting. Metro working with Caltrans.
- Notice to Proceed issued to OHL USA on April 1, 2014
- 100% foundation design submitted to Metro/Caltrans January 2015
- 100% station design completed March 2015
- Pending issues include timely approval of 100% design package with Caltrans, Caltrans permits and ROW certifications to start construction, and resolution of change order for Red Line tunnel foundation conflicts
- Project scheduled to be completed January 2017, although slippage is likely due to above issues.



**June 2015**

**Construction Committee**

Los Angeles County Metropolitan Transportation Authority



# CIP PROJECTS

## MRL-MOL N. Hollywood Station West Entrance:

### Progress:

- Construction 42% complete
- Elevator Casing Drilled
- Installed Mud Mat
- Installed Drainage Pipe
- Installation of Grounding ongoing
- Installation of High-density Polyethylene(HDPE) Membrane ongoing
- Knock-Out-Panel Removal Prep ongoing
- Project completion estimated for end of Spring 2016



June 2015

Construction Committee

Los Angeles County Metropolitan Transportation Authority

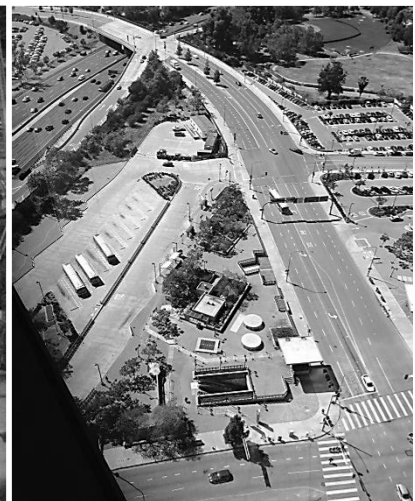
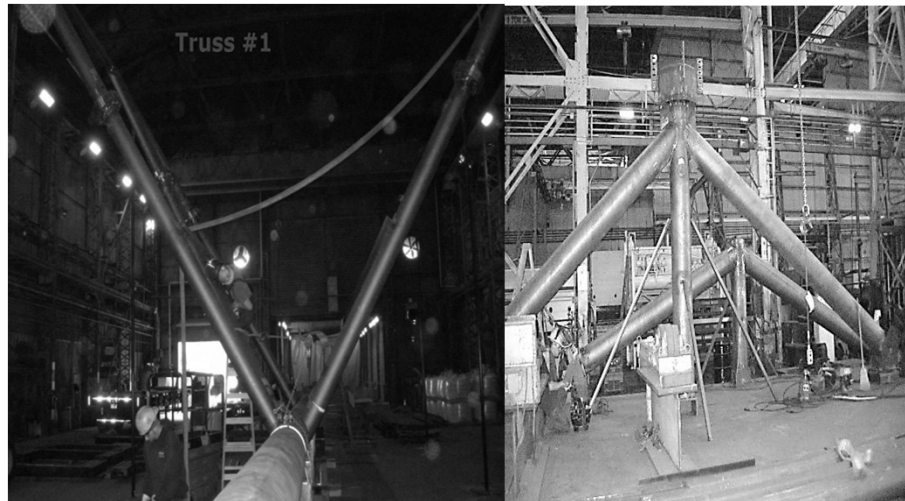


# CIP PROJECTS

## Universal Pedestrian Bridge:

### Progress:

- Construction 34% complete
- Foundation work (Forms & Rebar cages) at Station # 1 installed
- Foundation excavation work at Station # 3 ongoing
- Foundation work for transformer installation at Station # 0 ongoing
- Fabrication shop activities are about 45% complete and on schedule
- Project completion scheduled for Spring 2016
- Schedule Risk: Escalators must be delivered by September 2, 2015 to make schedule. Staff/contractor working to get hard commitment from Schindler on delivery date.



June 2015

Construction Committee  
Los Angeles County Metropolitan Transportation Authority



# CIP PROJECTS

## MBL Stations Refurbishment:

- Project 74% complete (total of 15 out of 21 stations completed)
- Currently working on three stations (Washington/San Pedro/Grand)
- Project on schedule to be completed by March 2016



Installing new canopy at Florence Station



New Florence Station canopy with new lighting

June 2015

Construction Committee

Los Angeles County Metropolitan Transportation Authority

