



Metro

Los Angeles County
Metropolitan Transportation
Authority
One Gateway Plaza
3rd Floor Board Room
Los Angeles, CA

Board Report

File #: 2015-0766, **File Type:** Oral Report / Presentation

Agenda Number: 28.

**SYSTEM SAFETY, SECURITY AND OPERATIONS COMMITTEE
JUNE 18, 2015**

Operations Employee of the Month.

June Operations Employees of the Month



Arnold Fortaleza
Bus Transportation



Lawrence Sears
Wayside Systems Custodial
Services

Operations Employees of the Month

Bus Transportation

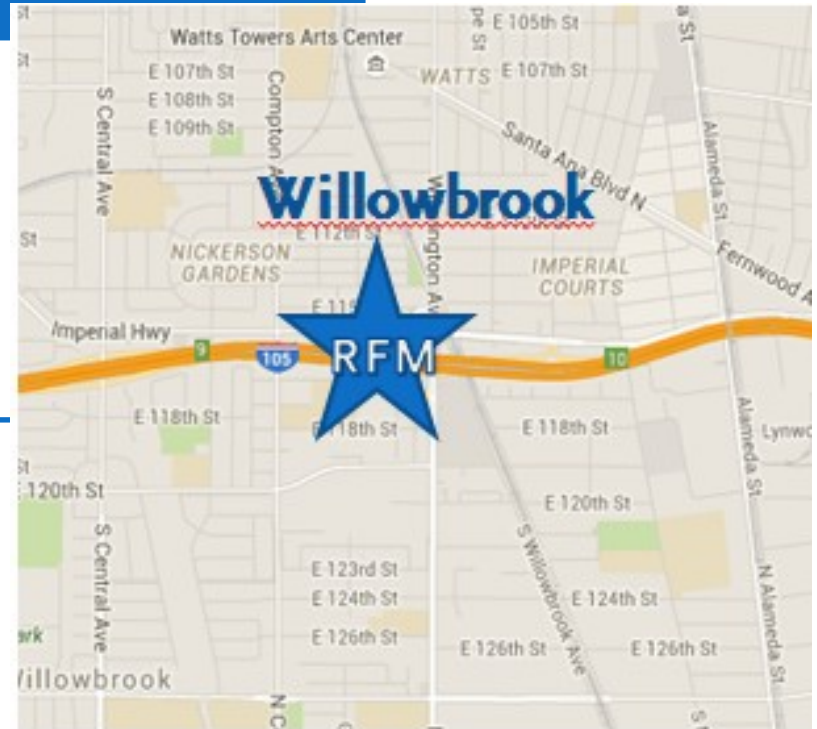
- Arnold Fortaleza
- Bus Operator
- Division 8



Operations Employees of the Month

Rail Maintenance

- Lawrence Sears
- Custodian
- Rail Facilities Maintenance



Metro



System Safety, Security and Operations Report



Metro

**System Safety, Security and Operations
Committee**

June 18, 2015

Security

Safety

On-Time
Performance

Reliability

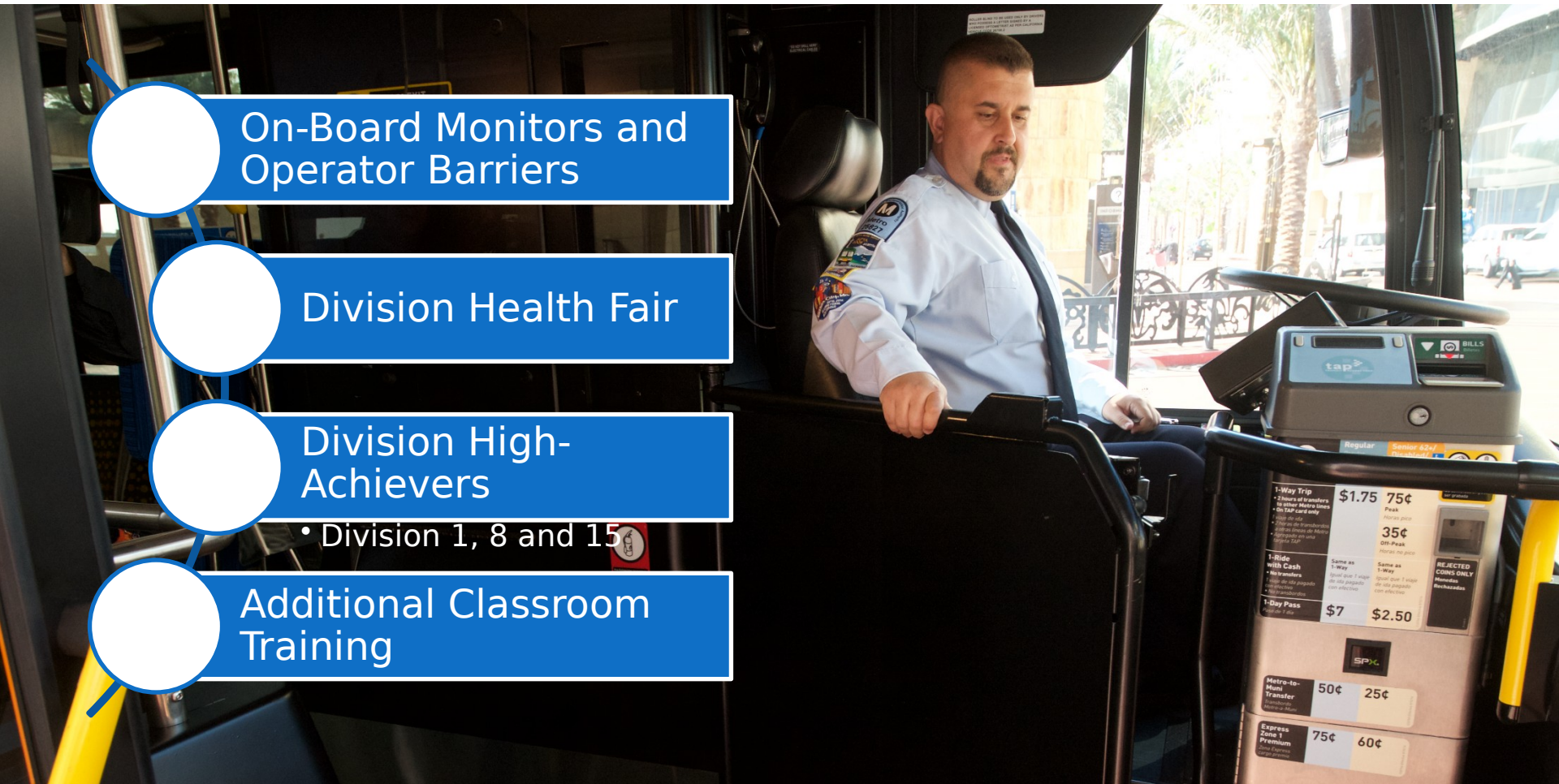
On-Board Monitors and
Operator Barriers

Division Health Fair

Division High-
Achievers

• Division 1, 8 and 15

Additional Classroom
Training



June Operations Updates

System Cleanliness



Background
Inspection Score



Initiatives



Rail

Bus



Metro

Background

Cleanline
SS
Inspections

Vehicle Inspection Program (Bus and Rail)

- Average 4 - 25 random rail cars and buses are inspected monthly at each Division
- Problem areas are brought up to Supervisors for immediate action

Station Inspections

- Employees ride the Metro Rail System station to station conducting inspections
- Photos are taken of problem areas for immediate corrective action

Training

- In July 2014, all newly hired and existing Rail Supervision was trained on Metro's cleanliness expectations

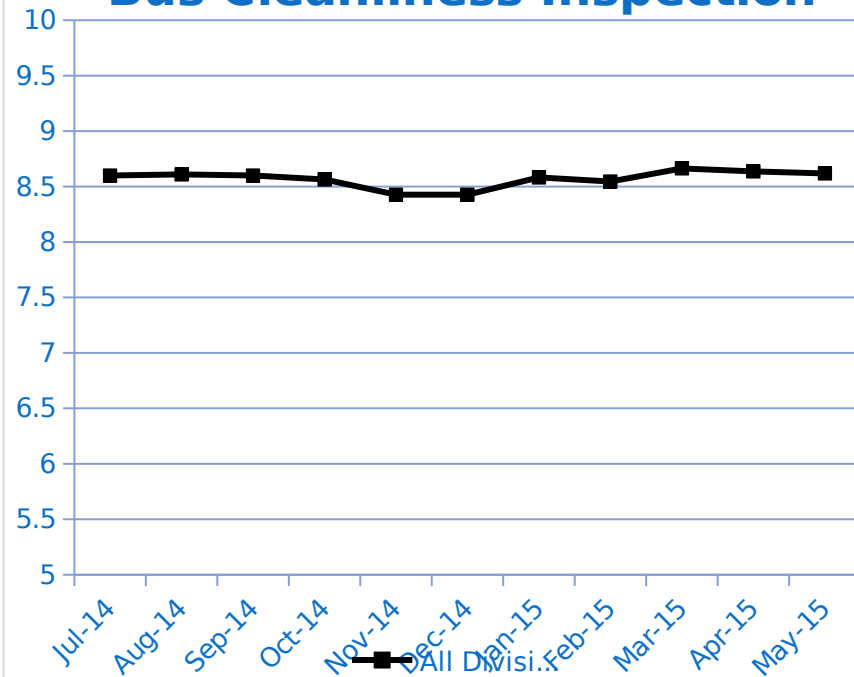


Metro

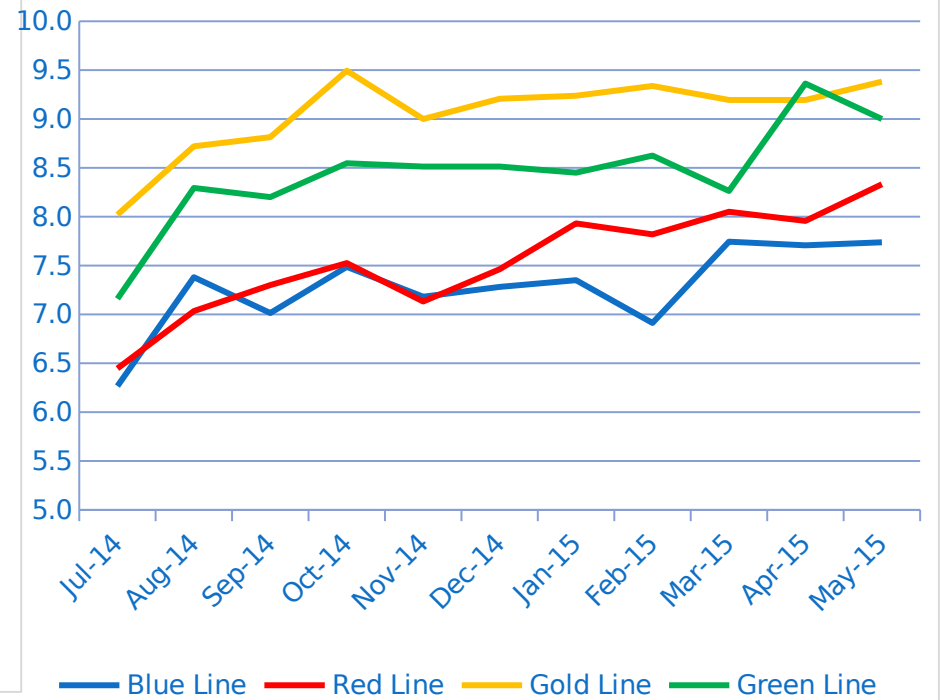
Inspection Scores

Bus and
Rail
Cleanlines
s FY15

Bus Cleanliness Inspection



Rail Cleanliness Inspection



Initiatives

Cleanline SS Programs

Bus Anti-Graffiti Program

- Replaced 65,000 damaged seat inserts (yearly)
- Replaced 50,000 window sacrificial guards (yearly)
- Remove and clean all graffiti and slap tags (daily)

Expanded Cleaning Programs

- Mopping floors daily
- Wiping down bus operators area, dashes and ledges daily
- Wipe down bus interior panels and A/C vents
- Window water spot removal program

Rail Stations

- Aggressive platform and station pressure washing program
- Stainless steel sacrificial film
- Actively monitor service contracts for compliance

