



Board Report

File #: 2015-0886, File Type: Informational Report

Agenda Number: 52.

CONSTRUCTION COMMITTEE JULY 16, 2015

SUBJECT: ENGINEERING AND CONSTRUCTION EXECUTIVE DIRECTOR'S REPORT

ACTION: RECEIVE AND FILE

RECOMMENDATION

RECEIVE AND FILE **Engineering and Construction Executive Director's report.**

DISCUSSION

The Engineering and Construction Executive Director's Report is a monthly status report presented by Bryan Pennington, Executive Director Engineering and Construction.

ATTACHMENTS

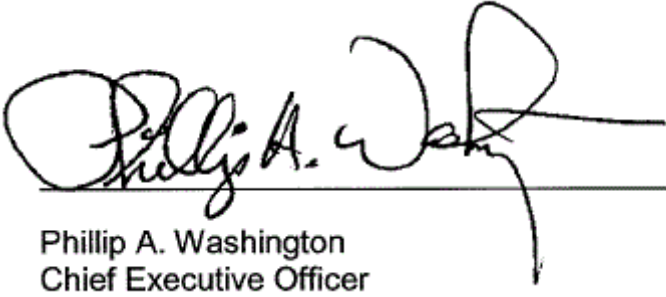
Attachment A - Engineering and Construction Executive Director's Report

Prepared by:

- **Crenshaw/LAX** - Charles Beauvoir, Deputy Executive Officer, Project Mgmt., (213)299-3095
- **Regional Connector** - Girish Roy, Deputy Executive Officer, Project Mgmt., (213)893-7119
- **Westside Purple Line Ext 1 and 2** - Dennis Mori, EO Project Mgmt., (213)922-7238
- **I-405** - Michael Barbour, Deputy Executive Director, Transit, (213)922-2261
- **Division 13** - Timothy Lindholm, EO Project Engr., (213)922-7297
- **Patsaouras Plaza Busway Station** - Timothy Lindholm, EO Project Engr., (213)922-7297
- **MRL - MOL North Hollywood Station** - Samuel Mayman, EO Project Engr., (213)922-7289
- **Universal Pedestrian Bridge** - Samuel Mayman, EO Project Engr., (213)922-7289
- **Metro Blue Line Station** - Samuel Mayman, EO Project Engr., (213)922-7289
- **Presentation** - Yohana Jonathan, Departmental System Analyst, (213)922-7592

Reviewed by:

Bryan Pennington, Executive Director, Engineering and Construction, (213) 922-7449



Phillip A. Washington
Chief Executive Officer

Engineering & Construction -- Transit Status Report

Significant Issues

Presented By

Bryan Pennington

Executive Director

Engineering and Construction

CRENSHAW/LAX TRANSIT PROJECT

SIGNIFICANT HIGHLIGHTS

- Overall Project 33% complete. Design-builder's design is 91% and construction is 16% complete. Discussion underway with design-builder regarding expediting work efforts
- Expo Station – Tier two strut installation ongoing and excavation to tier three level beginning
- Green Line Connection & Aviation/Century Station – Beginning installation of falsework to support upcoming concrete pour for station structure



Green Line Connection & Aviation/Century Station



Vernon Station Decking

July 2015

Construction Committee
Los Angeles County Metropolitan Transportation Authority



REGIONAL CONNECTOR TRANSIT CORRIDOR

SIGNIFICANT HIGHLIGHTS

Design Build Contract (DB)

- DB overall contract is 21% complete as of the end of June 2015. The overall final design is 72% complete as of the end of June 2015
- Piling work at Mangrove site for Tunnel Boring Machine(TBM) Launch Pit site completed in June 2015 →
- Supplemental Environmental Impact Statement(SEIS) was issued for public comments on June 12, 2015



WESTSIDE PURPLE LINE – SECTION 1

SIGNIFICANT HIGHLIGHTS

Overall Section 1 Advanced Utility Relocations work is 48% complete.

- The Wilshire/Fairfax Advanced Utility Relocations Contractor is continuing with power and water work, and is on schedule to complete in October 2015.
- The Wilshire/La Cienega Advanced Utility Relocations Contractor continues with the Southern California Edison (SCE) power relocation work along the westbound lanes of Wilshire Boulevard. AT&T relocation work in the same area is underway.



Setting Power Vault on Wilshire

Design-Build is 2% complete.

- The Design/Builder for Tunnels, Stations, Trackwork, Systems and Systems Integration Testing is continuing with final design and site preparation work at various construction staging areas.
- The permit required for design survey and mapping, and geotechnical field investigation work within the City of Beverly Hills has been approved by the City Council.

WESTSIDE PURPLE LINE – SECTION 2

SIGNIFICANT HIGHLIGHTS

- An Industry Review with the prime contracting community was held on June 4, 2015, which provided an overview of the Project to the contracting community.
- Advanced Preliminary Engineering continues to support the advertisement of a Request for Qualifications/Request for Proposal in early September 2015.
- Escrow closed on June 18, 2015, for Metro's purchase of the Ace Gallery Building property required for the Wilshire/Rodeo Station entrance.

I-405 SEPULVEDA PASS IMPROVEMENTS PROJECT

SIGNIFICANT HIGHLIGHTS

- Punchlist items 99% complete
- Issuance of substantial completion and acceptance by Caltrans is subject to resolution of Kiewit Retaining Wall design issue
- Project is working with Kiewit to settle merited claims, Request for Changes (RFCs), and Provisional Sum Items prior to going to Arbitration



July 2015

Construction Committee
Los Angeles County Metropolitan Transportation Authority



DIVISION 13 BUS O&M FACILITY

SIGNIFICANT HIGHLIGHTS

- Project 96% Complete. Project completion estimated for September 2015
- Primary work at present includes mechanical, electrical, equipment installation, IT, interior finishing, furnishings, exterior skin, and landscaping
- Commissioning of building systems started in May 2015



July 2015

Construction Committee
Los Angeles County Metropolitan Transportation Authority



PATSAOURAS PLAZA BUSWAY STATION

SIGNIFICANT HIGHLIGHTS

- Project approximately 5% complete, construction start likely to slip to Fall 2015
- Pending issues include timely approval of 100% design package with Caltrans, Caltrans permits and ROW certifications to start construction, and resolution of change order for Red Line tunnel foundation conflicts
- Project scheduled to be completed January 2017, although slippage is likely due to above issues



July 2015

Construction Committee
Los Angeles County Metropolitan Transportation Authority



CIP PROJECTS

MRL-MOL N. Hollywood Station West Entrance:

Progress:

- Construction 42% complete. Construction completion Spring 2016
- Ongoing activities include the following:
Elevator Casing, Knockout Panel(KOP)
Invert Foundation, installation of High-density Polyethylene(HDPE) Membrane, Escalator Rebar, grounding, conduit, and Bulkhead/Water-stop work



July 2015

Construction Committee

Los Angeles County Metropolitan Transportation Authority

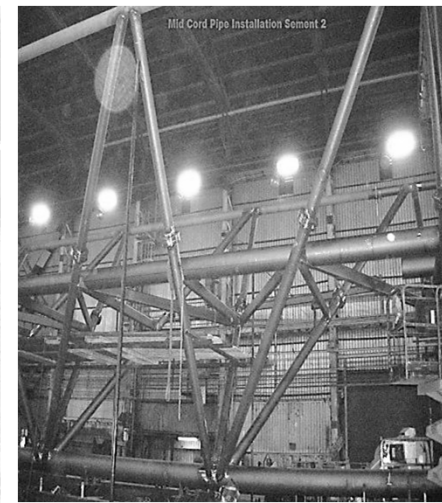


CIP PROJECTS

Universal Pedestrian Bridge:

Progress:

- Construction 34% complete. Project completion targeted for January 2016
- Ongoing foundation work consist of transformer installation at Station # 0, Forms & Rebar cages at Station # 1, and excavation work at Station # 3. Fabrication shop activities are about 50% complete
- Schedule Risk: Escalators must be delivered by September 2, 2015 to make schedule. Staff/contractor working to get hard commitment from Schindler on delivery date



July 2015

Construction Committee
Los Angeles County Metropolitan Transportation Authority



CIP PROJECTS

MBL Stations Refurbishment:

- Project 86% complete (total of 18 out of 21 stations completed)
- Working on Slauson and Vernon currently
- Project almost 4 months ahead of baseline schedule
- Targeting substantial completion at end of July prior to start of the Special Olympics



Washington/San, Pedro/Grand, and Canopies; all three set on June 6, 2015

July 2015

Construction Committee
Los Angeles County Metropolitan Transportation Authority

