



Metro

Los Angeles County
Metropolitan Transportation
Authority
One Gateway Plaza
3rd Floor Board Room
Los Angeles, CA

Board Report

File #: 2015-1101, **File Type:** Oral Report / Presentation

Agenda Number: 35.

**SYSTEM SAFETY, SECURITY AND OPERATIONS COMMITTEE
NOVEMBER 19, 2015**

RECEIVE oral report on System Safety, Security and Operations.



Metro Bus & Rail Performance

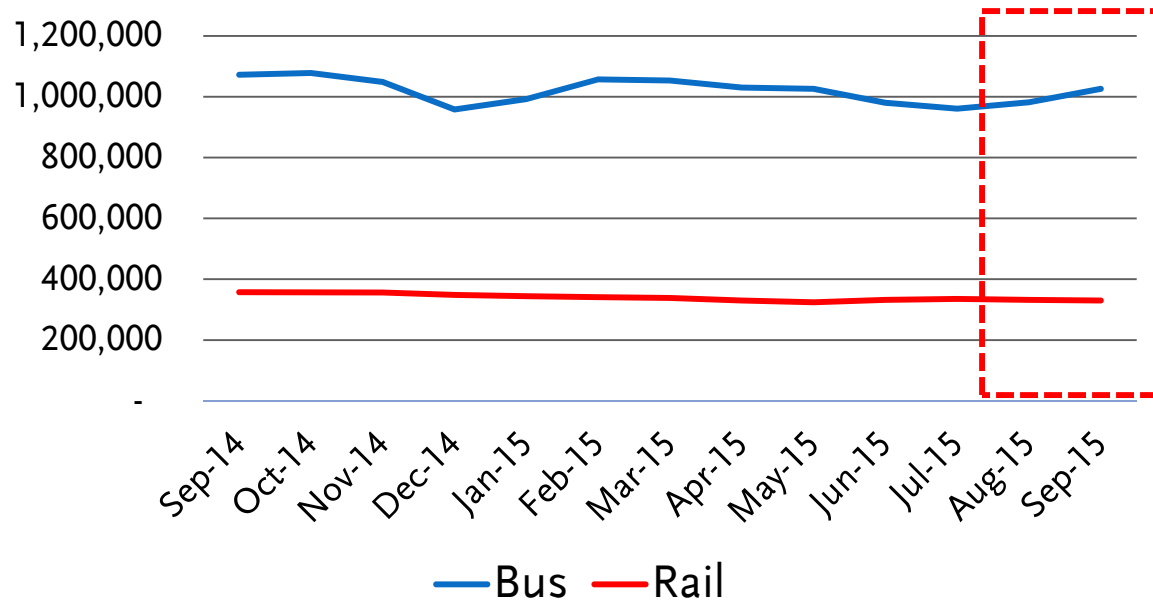
FY16 Quarter 1

November 19, 2015



Bus & Rail Average Weekday Ridership

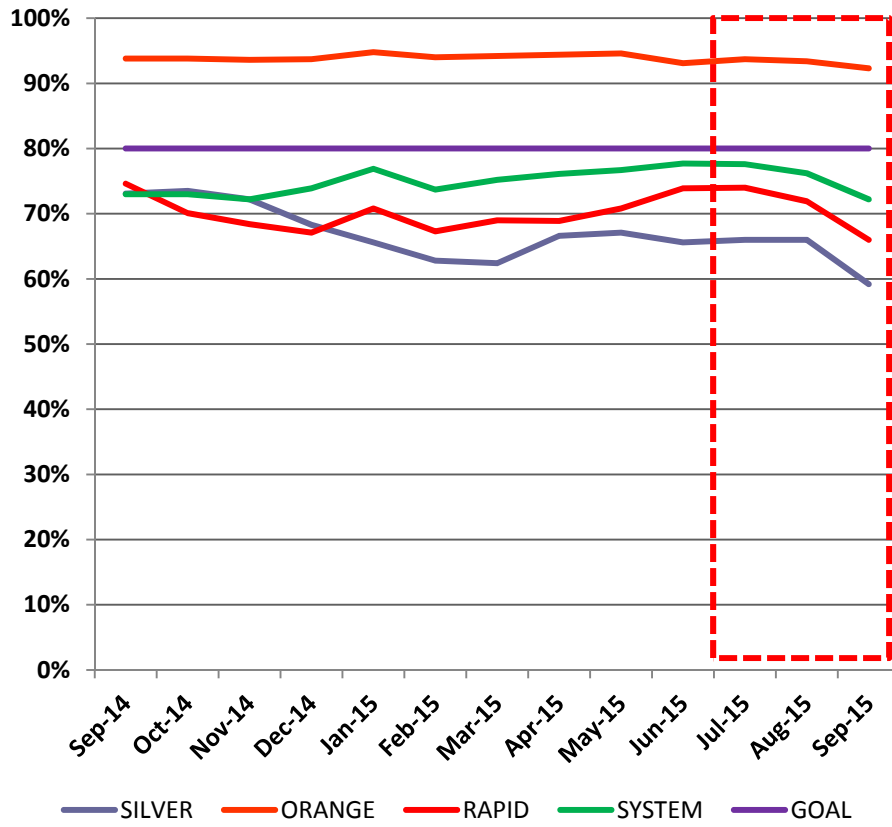
Bus & Rail Average Weekday Ridership/
Monthly Estimates



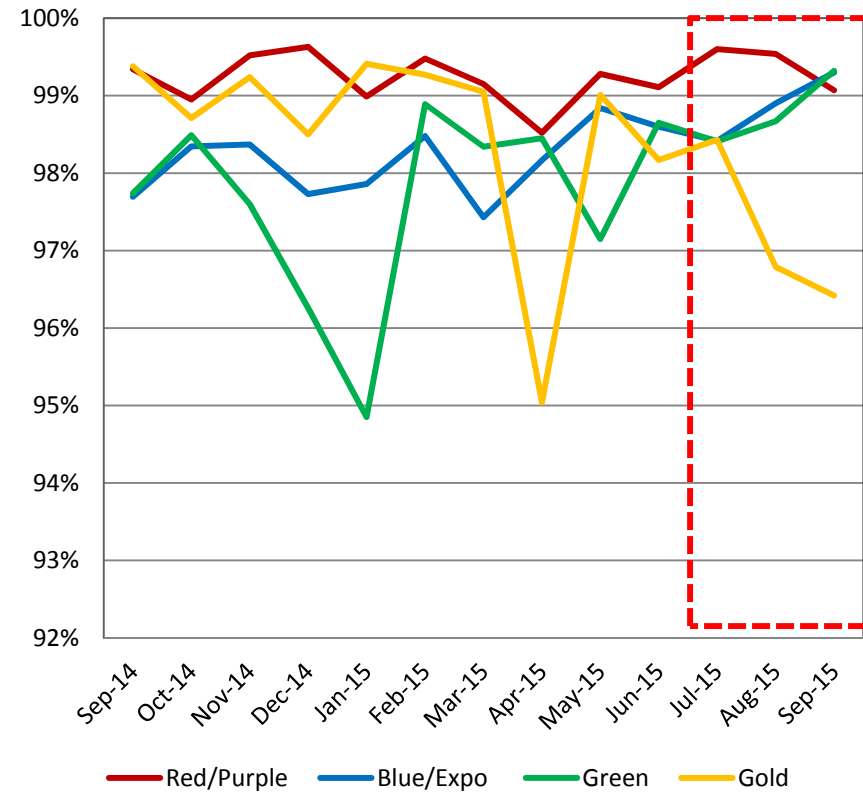
| Fiscal Year | Bus | Rail |
|-------------|-----------|---------|
| 2014 | 1,083,697 | 358,513 |
| 2015 | 1,027,652 | 344,900 |

Bus & Rail In Service On-Time Performance

Bus ISOTP



Rail ISOTP

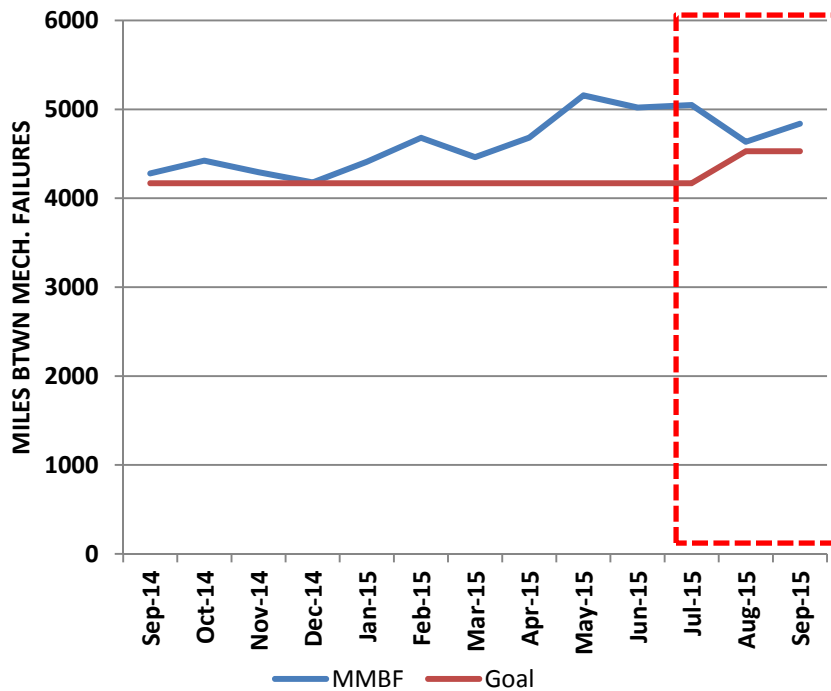


| Line | FY15 Actual | FY15 Goal | FY16 Goal |
|------------|-------------|-----------|-----------|
| Red/Purple | 99.13% | 99.9% | 99.9% |
| Blue | 99.41% | 97.76% | 99.4% |
| Green | 97.39% | 99.80% | 99.4% |
| Gold | 98.56% | 99.9% | 99.9% |
| Expo | 99.14% | 99.14% | 99.1% |



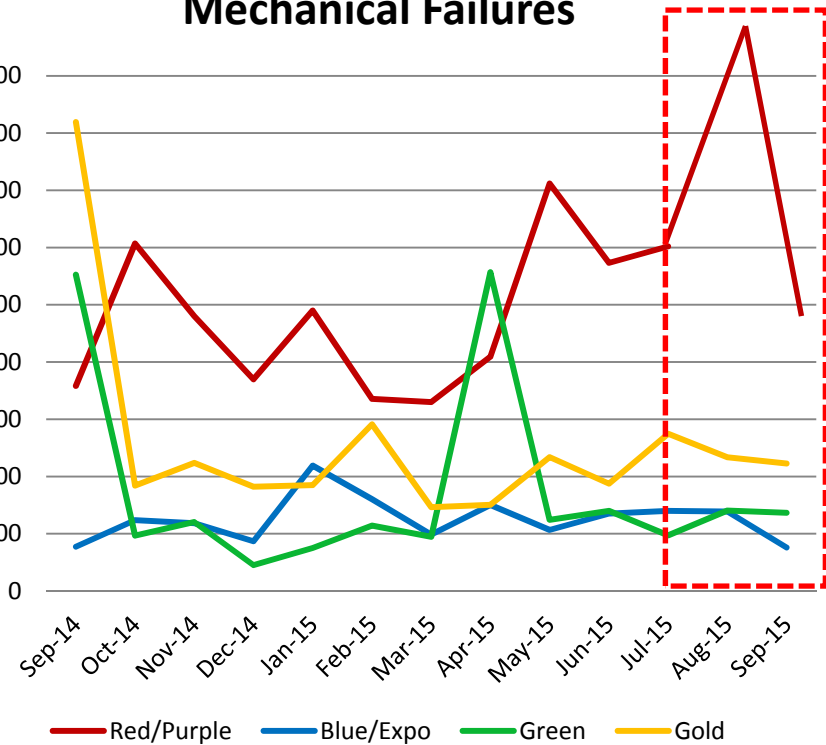
Bus & Rail Mean Miles Between Mechanical Failures

Directly Operated Bus Mean Miles Between Mechanical Failures



| | FY 15 Actual | FY15 Goal | FY16 Goal |
|-----|--------------|-----------|-----------|
| Bus | 4,482 | 4,169 | 4,529 |

Rail Mean Miles Between Mechanical Failures

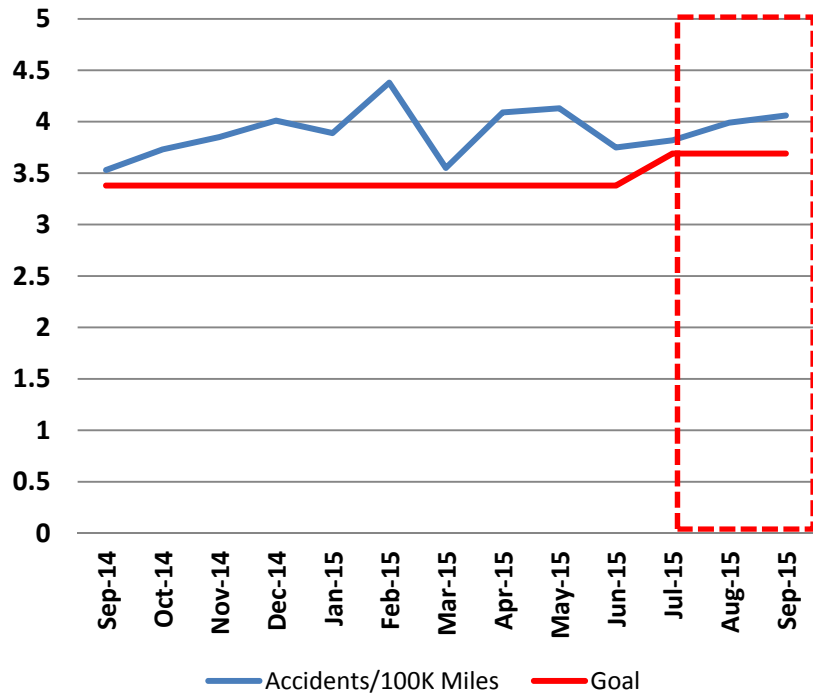


| Line | FY15 Actual | FY 15 Goal | FY16 Goal |
|------------|-------------|------------|-----------|
| Red/Purple | 85,090 | 36,000 | 86,792 |
| Blue/Expo | 23,716 | 15,000 | 23,934 |
| Green | 21,054 | 16,000 | 21,008 |
| Gold | 44,171 | 23,000 | 45,762 |



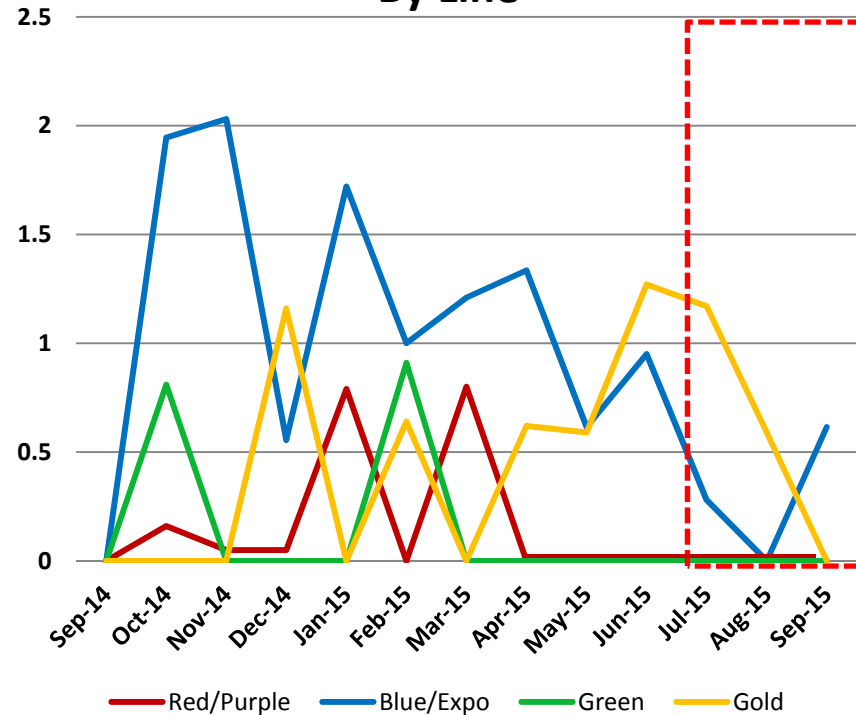
Bus & Rail Vehicular Accidents per 100,000 Miles

Bus Accidents/100K Miles



| | FY 15 Actual | FY15 Goal | FY16 Goal |
|-----|--------------|-----------|-----------|
| Bus | 3.83 | 3.38 | 3.69 |

Rail Vehicle Accidents/100K Miles By Line

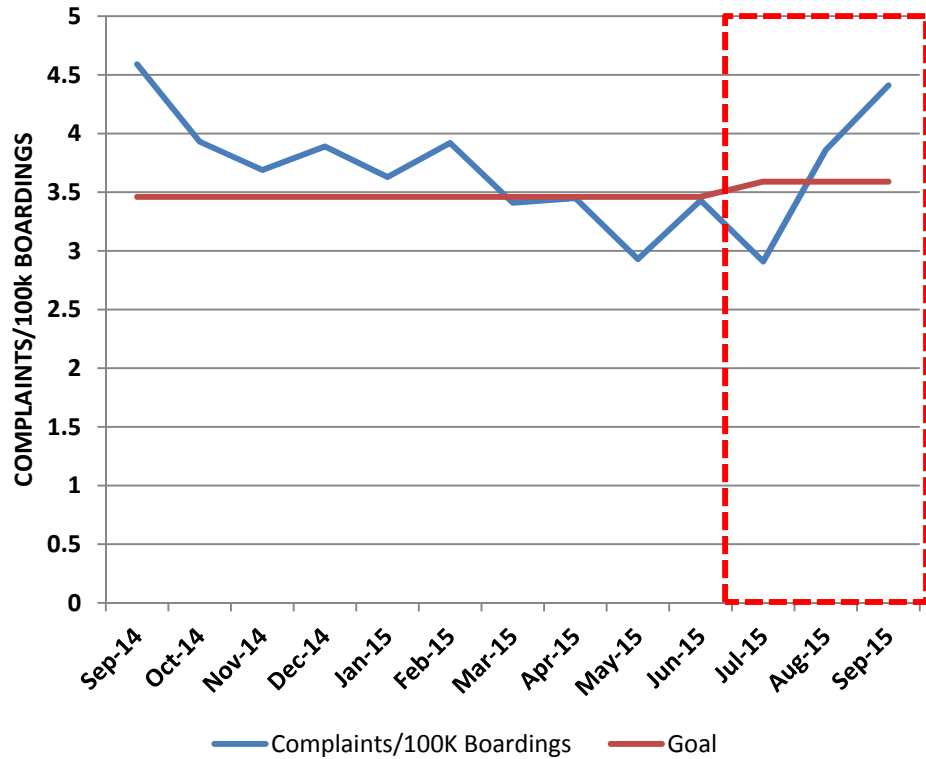


| Line | FY 15 Actual | FY 15 Goal | FY16 Goal |
|------------|--------------|------------|-----------|
| Red/Purple | 0.13 | 0.06 | 0.14 |
| Blue | 0.89 | 1.35 | 1.10 |
| Green | 0.14 | 0.06 | 0.15 |
| Gold | 0.54 | 0.41 | 0.47 |
| Expo | 1.02 | 1.35 | 1.10 |

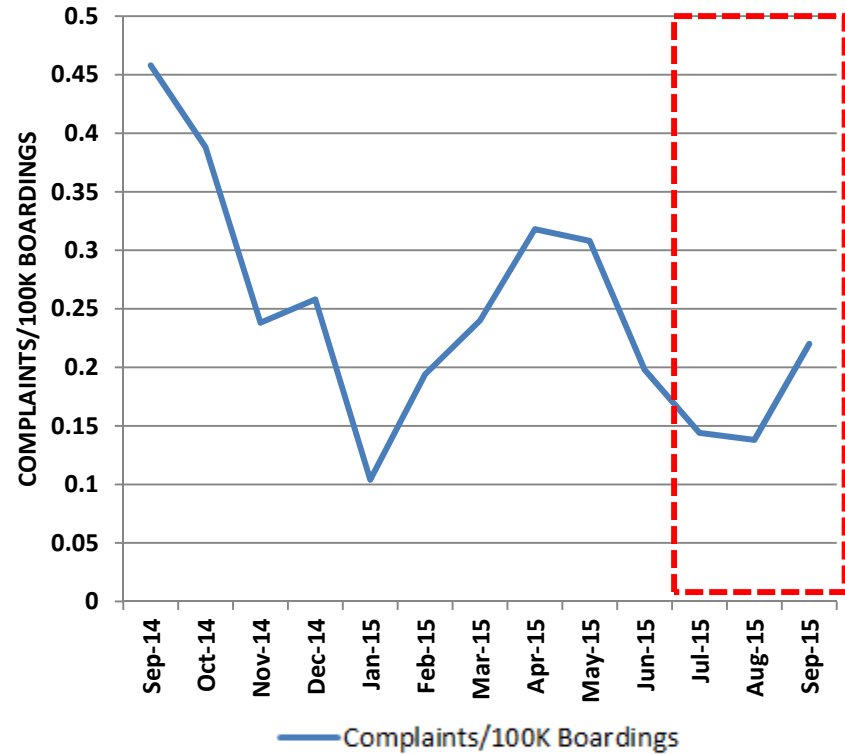


Bus & Rail Customer Complaint Rates

Bus Complaints/100K Boardings



Rail Complaints/100K Boardings

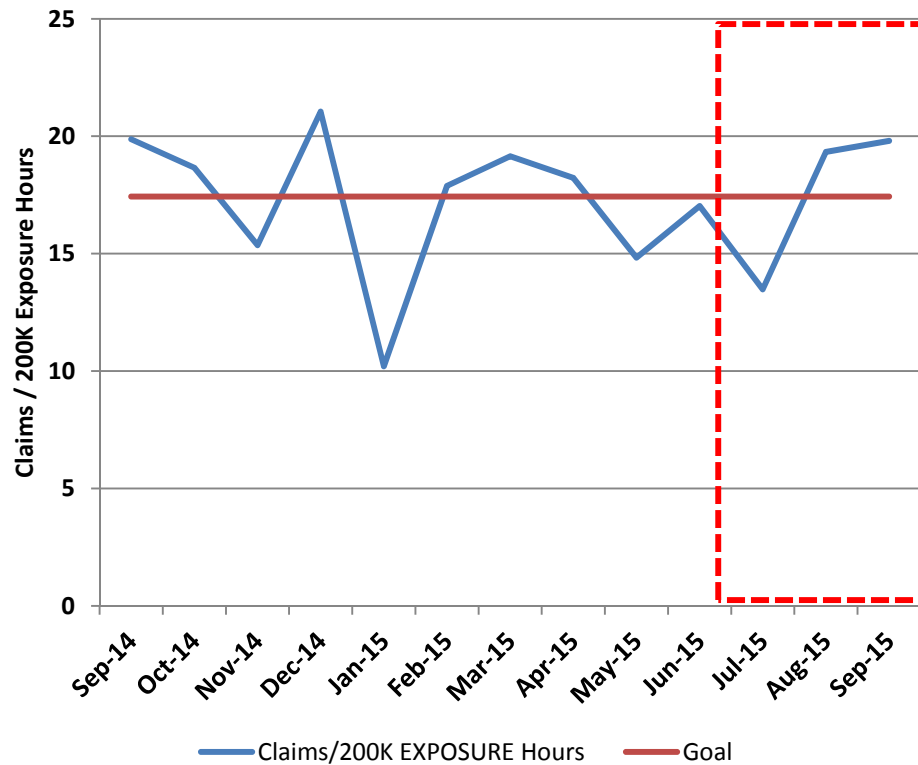


| Line | FY 15 Actual | FY 15 Goal | FY16 Goal |
|------------|--------------|------------|-----------|
| Red/Purple | 0.11 | 0.45 | 0.27 |
| Blue | 0.27 | 1.08 | 0.12 |
| Green | 0.32 | 0.90 | 0.31 |
| Gold | 0.34 | 1.19 | 0.34 |
| Expo | 0.38 | 1.08 | 0.40 |



New Bus & Rail Worker's Compensation Claims

Bus New Workers Compensation Claims/200K Exposure Hours



Rail New Workers Compensation Claims /200K Exposure Hours

