



Board Report

File #: 2015-1297, File Type: Oral Report / Presentation

Agenda Number: 32.

CONSTRUCTION COMMITTEE SEPTEMBER 17, 2015

Program Management Executive Director's report.

DISCUSSION

RECEIVE AND FILE Program Management Executive Director's report.

ATTACHMENTS

Attachment A -

Prepared by:

- **Crenshaw/LAX** - Charles Beauvoir, Deputy Executive Officer, Project Mgmt., (213)299-3095
- **Regional Connector** - Girish Roy, Deputy Executive Officer, Project Mgmt., (213)893-7119
- **Westside Purple Line Ext 1 and 2-** Dennis Mori, EO Project Mgmt., (213)922-7238
- **I-405** - Nazem Moussa, Deputy Executive Officer, Project Mgmt. (213)922-7221
- **Division 13** - Timothy Lindholm, EO Project Engr., (213)922-7297
- **Patsaouras Plaza Busway Station** - Timothy Lindholm, EO Project Engr., (213)922-7297
- **MRL - MOL North Hollywood Station** - Samuel Mayman, EO Project Engr., (213)922-7289
- **Universal Pedestrian Bridge** - Samuel Mayman, EO Project Engr., (213)922-7289
- **Metro Blue Line Station** - Samuel Mayman, EO Project Engr., (213)922-7289
- **Presentation** - Yohana Jonathan, Departmental System Analyst, (213)922-7592

Reviewed by:

Bryan Pennington, Program Management, (213) 922-7449

Program Management -- Transit Status Report

Significant Issues

Significant Issues

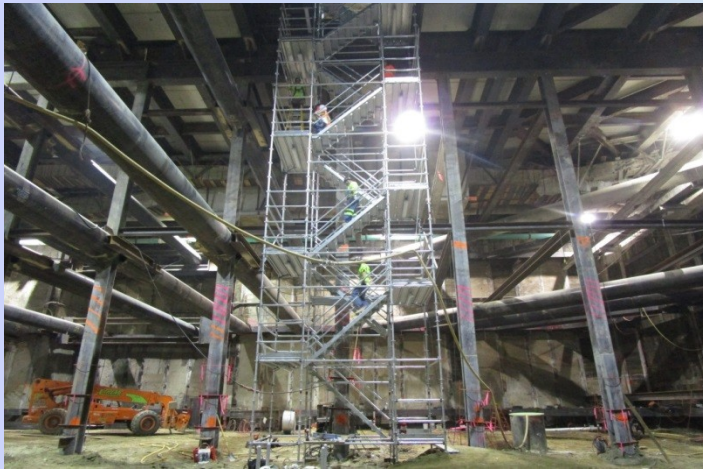
Presented By

Bryan Pennington
Program Management

CRENSHAW/LAX TRANSIT PROJECT

SIGNIFICANT HIGHLIGHTS

- Overall Project 36% complete. Design-builder's design is 95% and construction is 19% complete. Discussion underway with design-builder regarding expediting work efforts
- Expo Station – Tier three struts installation and excavation to invert level ongoing
- I-405 Bridge – Two of four concrete foundations for bridge piers placed
- Aviation/Century Station – Continuing falsework to support upcoming concrete pour



EXPOSITION STATION – Tier 3 struts and excavation in the northern portion of the station box



AVIATION/CENTURY STATION – Bridge falsework for concrete pour

REGIONAL CONNECTOR TRANSIT CORRIDOR

SIGNIFICANT HIGHLIGHTS

Design Build Contract (DB)

- Overall DB contract is 21.5% complete. Final design is 78% complete as of August 2015
- Advance Utility Relocation (AUR) scope is ongoing, with work underway at 1st/Alameda, Flower and 2nd/Broadway
- Metro is working with LADWP on AUR impact and construction opportunities to mitigate overall schedule impact.
- SEIS was issued on June 12, 2015, public comments received and are being incorporated in the finalized report in September 2015
- Major street closures are being coordinated with LABOE, LADOT and CD14. 2nd/Broadway intersection closure is key to expedite utility relocation and station construction



Vault installation on 5th/Flower intersection

WESTSIDE PURPLE LINE – SECTION 1

SIGNIFICANT HIGHLIGHTS

Overall Section 1 Advanced Utility Relocations work is 57% complete.

- The Wilshire/Fairfax Advanced Utility Relocations Contractor achieved Milestone #2 (Power) in mid-July 2015 and is on schedule to complete in October 2015.
- The Wilshire/La Cienega Advanced Utility Relocations Contractor continues with the Southern California Edison (SCE) power relocation work and sanitary sewer work. AT&T relocation work in the same area is underway.



Site Preparation at Wilshire/La Brea North Yard

Design-Build is 2% complete.

- The Design/Builder for Tunnels, Stations, Trackwork, Systems and Systems Integration Testing is continuing with 60% to 85% final design submittals and site preparation work at various construction staging areas prior to the start of station construction.

WESTSIDE PURPLE LINE – SECTION 2

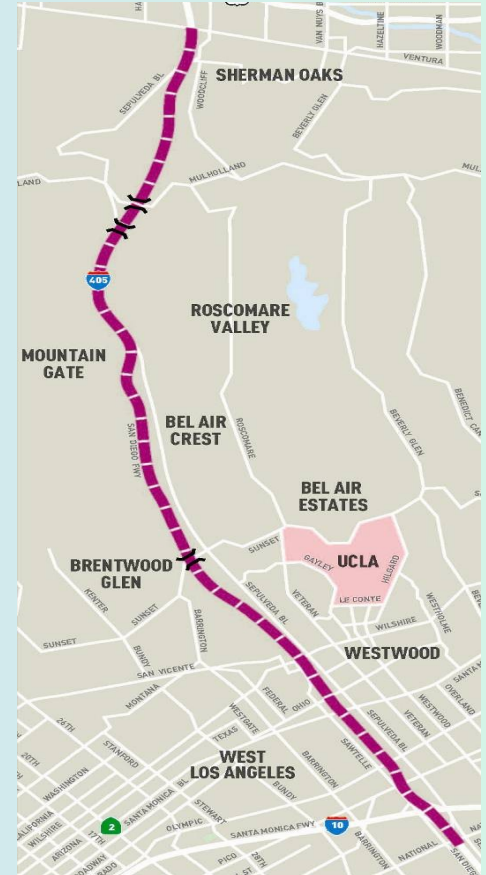
SIGNIFICANT HIGHLIGHTS

- Staff has completed the Industry Review process which started on June 4, 2015. Follow-up meetings with prime contractors were held in August 2015.
- Contract C1120 – Design/Build Request for Qualifications/Request for Proposal scheduled for mid-September 2015.
- Contract C1120 Request for Qualifications are due on October 23, 2015.
- The City of Beverly Hills approved the geotechnical investigation and utility potholing work permits at their City Council meeting on August 18, 2015.

I-405 SEPULVEDA PASS IMPROVEMENTS PROJECT

SIGNIFICANT HIGHLIGHTS

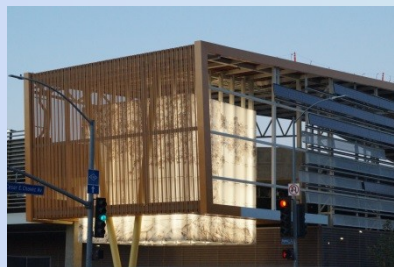
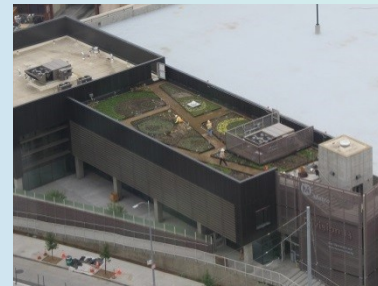
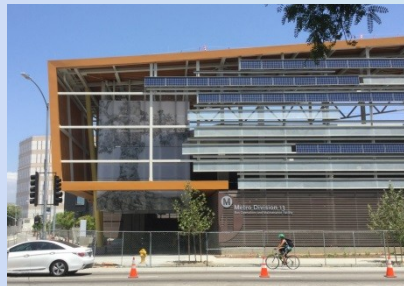
- Punch list items 99% complete
- Issuance of substantial completion is anticipated in September, and is subject to resolution of Errors and Omissions items and deficiencies missed by Kiewit
- Project is working with Kiewit to settle merited claims, Request for Changes (RFCs), and Provisional Sum Items prior to going to Arbitration



DIVISION 13 BUS O&M FACILITY

SIGNIFICANT HIGHLIGHTS

- Project 97% complete. Project completion delayed two months due to issues with lower level ventilation system. Mitigation in progress. Substantial completion now scheduled for November 2, 2015
- Primary work at present includes commissioning of building systems and equipment, testing of CNG fueling, interior finishing, furnishings, final landscaping, and punch list



September 2015

Construction Committee
Los Angeles County Metropolitan Transportation Authority



PATSAOURAS PLAZA BUSWAY STATION

SIGNIFICANT HIGHLIGHTS

- Project approximately 5% complete, construction start has slipped to Fall 2015
- Pending issues include timely approval of 100% design package with Caltrans, Caltrans permits and ROW certifications to start construction and resolution of change order for Red Line tunnel foundation conflicts
- Project completion scheduled for January 2017



September 2015

Construction Committee
Los Angeles County Metropolitan Transportation Authority



CIP PROJECTS

MRL-MOL N. Hollywood Station West Entrance:

Progress:

- Construction is 44% complete and scheduled for completion by May 2016
- Ongoing activities include the following:
 - Removal of Knockout Panel (KOP),
 - Installation of High-Density Polyethylene (HDPE) Membrane,
 - Installation of Walls/Bulkheads/Water-stops,
 - Installation of CMC Rebar,
 - Installation of embedded conduits/grounding and drainage pipe



CIP PROJECTS

Universal Pedestrian Bridge:

Progress:

- Construction 46% complete. First phase completion targeted by February 2016 to meet Universal's requirements. Second phase completion targeted by May 2016
- Ongoing activities include: Installation of Elevator Shaft HDPE, Installation of Elevator Tower at Station #1 and #3, Transformer and cable installation by LADWP, Fabrication and deliveries of various segments – top and bottom chords
- Schedule Risk: Uncertainty of timely delivery and installation of escalators and structural steel could have impact on timely completion of construction activities.



September 2015

Construction Committee
Los Angeles County Metropolitan Transportation Authority



CIP PROJECTS

MBL Stations Refurbishment:

- Project 99% complete
- Substantial completion issued July 31, 2015(109 days ahead of schedule, Total 10 months 21 stations)
- Final punch list items to be done by the end of September 2015
- Contract will be completed under budget



September 2015

Construction Committee
Los Angeles County Metropolitan Transportation Authority

