

Metro

Los Angeles County  
Metropolitan Transportation  
Authority  
One Gateway Plaza  
3rd Floor Board Room  
Los Angeles, CA



**Metro**

## Board Report

---

**File #:** 2015-1750, **File Type:** Oral Report / Presentation

**Agenda Number:** 39.

---

**SYSTEM SAFETY, SECURITY AND OPERATIONS COMMITTEE  
FEBRUARY 18, 2016**

RECEIVE oral report on **System Safety, Security and Operations.**



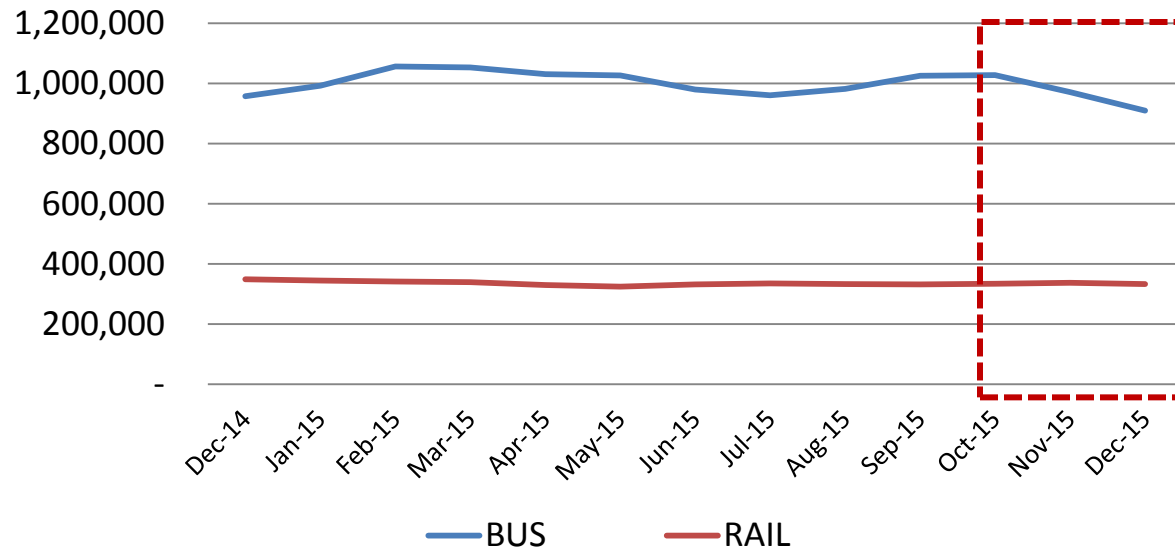
# Metro Bus & Rail Performance

## FY16 Quarter 2

### February 18, 2016

# Bus & Rail Average Weekday Ridership

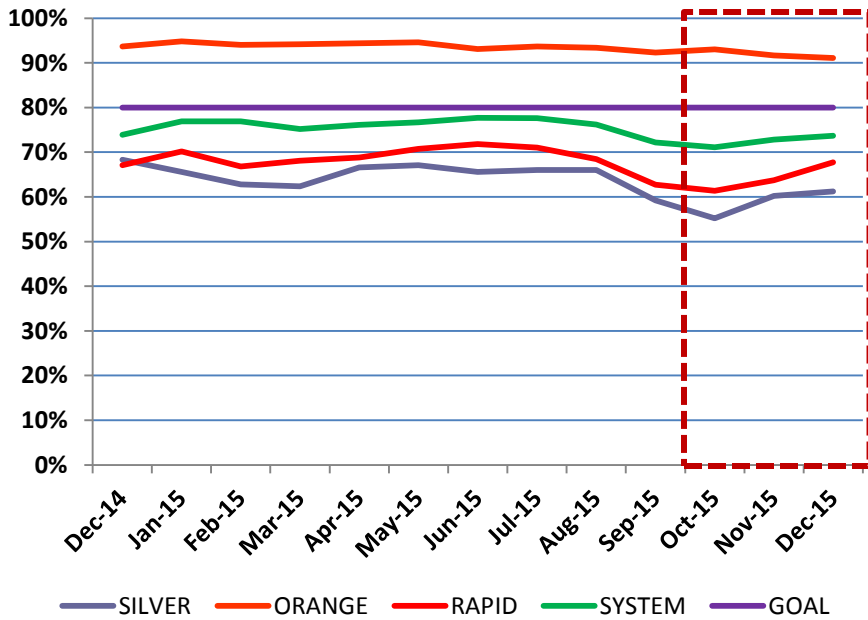
**Bus & Rail Average Weekday Ridership/  
Monthly Estimates**



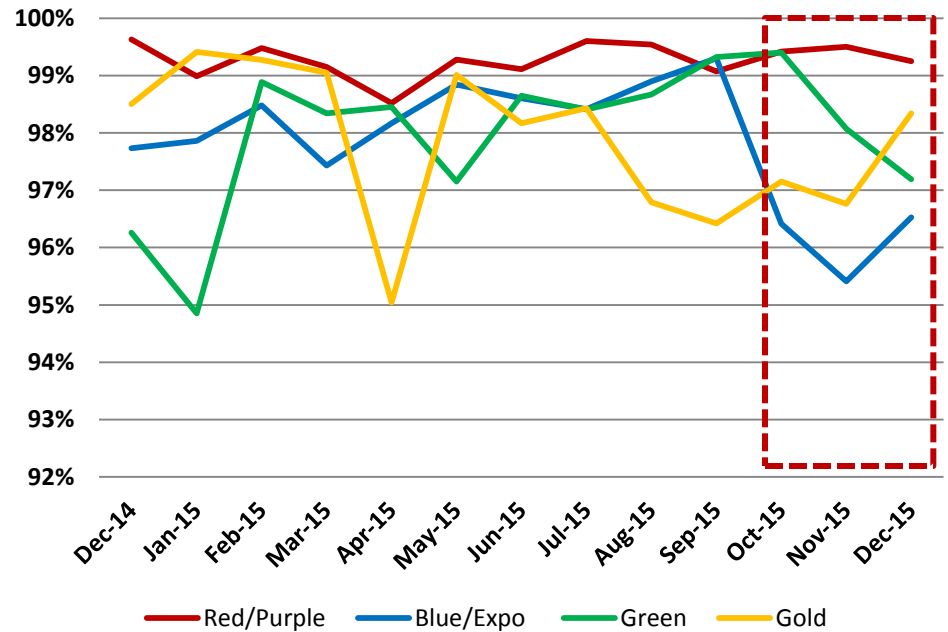
Fiscal Year	Bus	Rail
2014	1,083,697	358,513
2015	1,027,652	344,900

# Bus & Rail In Service On-Time Performance

## Bus ISOTP



## Rail ISOTP

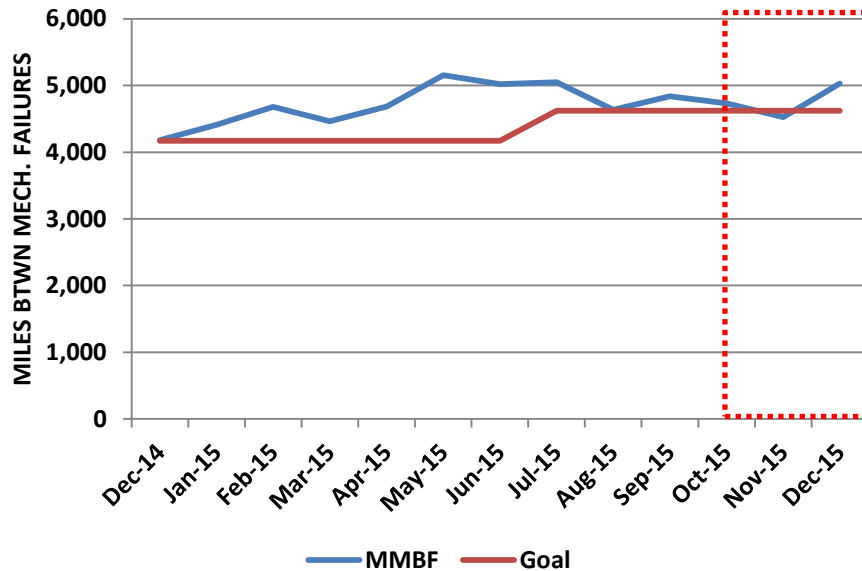


	FY15 Actual	FY16 YTD Actual	FY16 Goal
Bus	75.03%	73.55%	80%

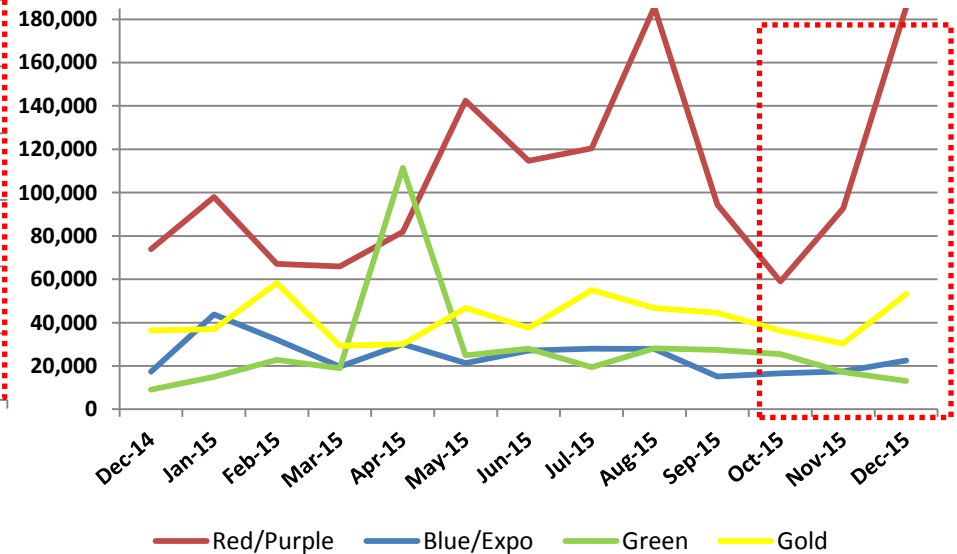
Line	FY15 Actual	FY16 YTD Actual	FY16 Goal
Red/Purple	99.13%	99.63%	99.9%
Blue	99.41%	99.34%	99.4%
Green	97.39%	99.51%	99.4%
Gold	98.56%	97.32%	99.9%
Expo	99.14%	98.86%	99.1%

# Bus & Rail Mean Miles Between Mechanical Failures

## Directly Operated Bus Mean Miles Between Mechanical Failures



## Rail Mean Miles Between Mechanical Failures

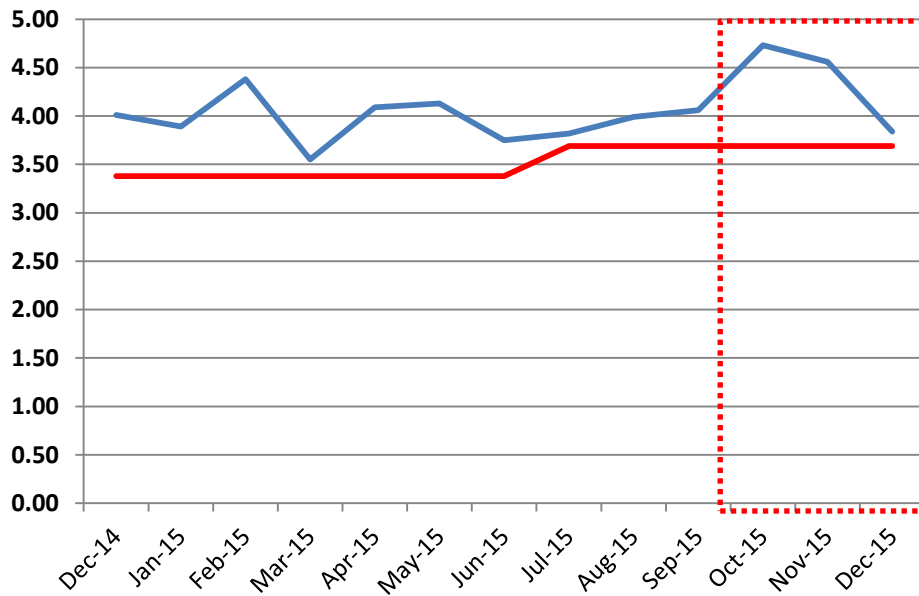


	FY15 Actual	FY16 YTD Actual	FY16 Goal
Bus	4,482	4,799	4,529

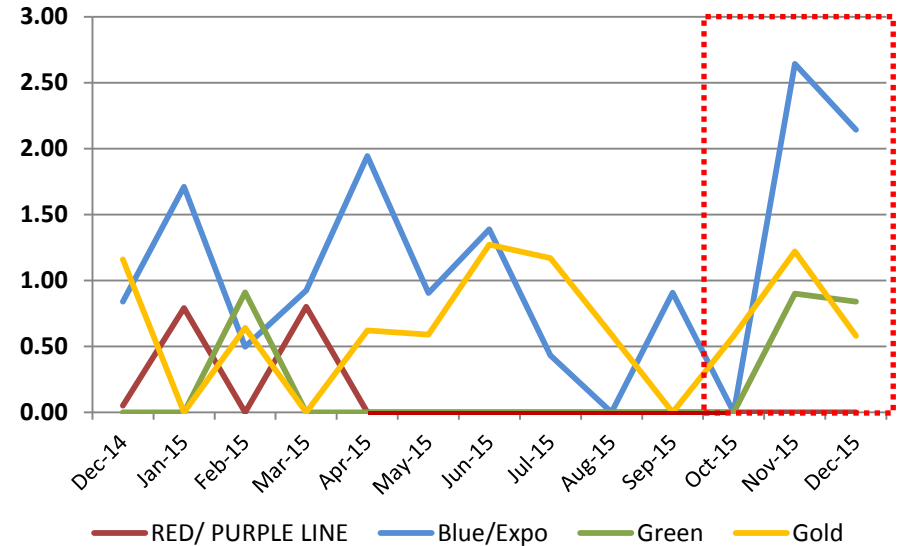
Line	FY15 Actual	FY16 YTD Actual	FY16 Goal
Red/Purple	85,090	120,521	86,792
Blue/Expo	23,716	20,117	23,934
Green	21,054	20,212	21,008
Gold	44,171	42,615	45,762

# Bus & Rail Vehicular Accidents per 100,000 Miles

## Bus Accidents/100K Miles



## Rail Vehicle Accidents / 100K Miles By Line

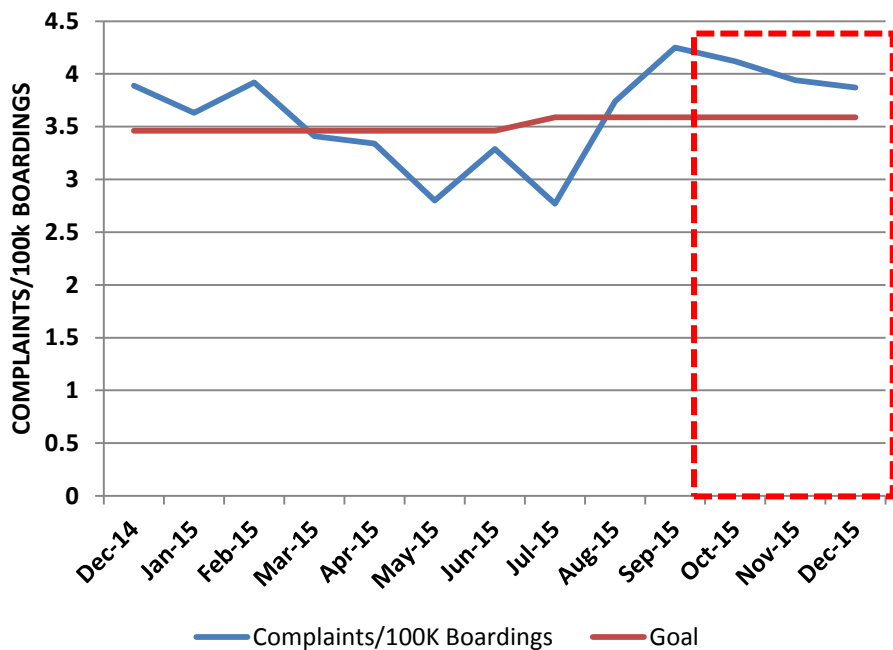


	FY15 Actual	FY16 YTD Actual	FY16 Goal
Bus	3.77	4.18	3.69

Line	FY 15 Actual	FY16 YTD Actual	FY16 Goal
Red/Purple	0.13	0.00	0.14
Blue	0.89	1.26	0.79
Green	0.14	0.28	0.15
Gold	0.54	0.69	0.47
Expo	1.02	0.29	1.10

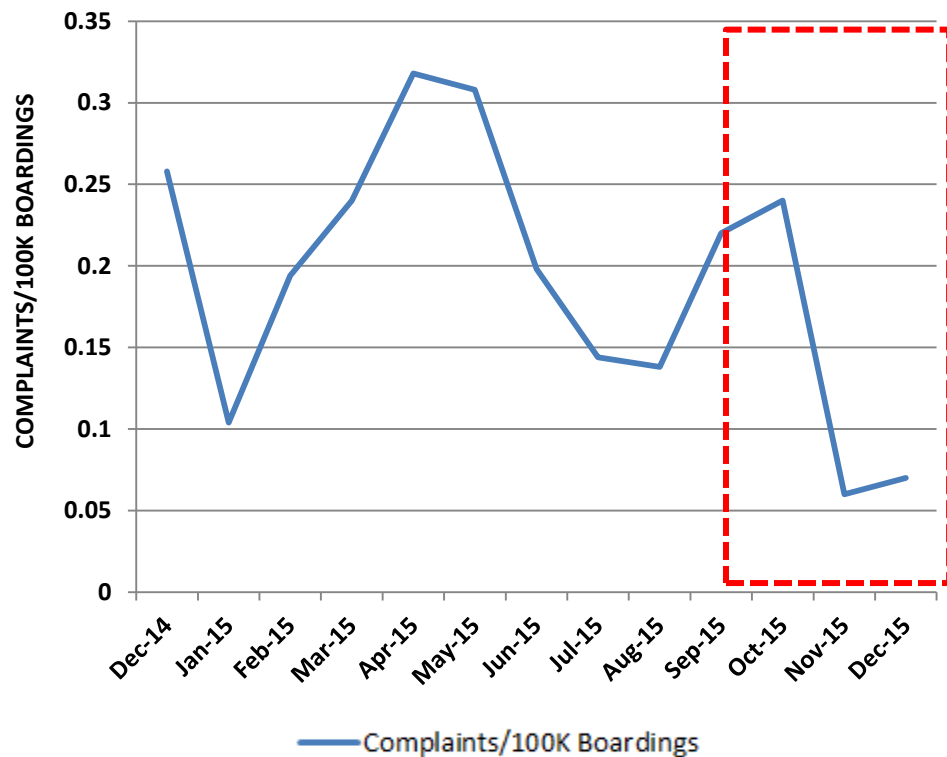
# Bus & Rail Customer Complaint Rates

## Bus Complaints/100K Boardings



	FY15 Actual	FY16 YTD Actual	FY16 Goal
Bus	3.63	3.78	3.59

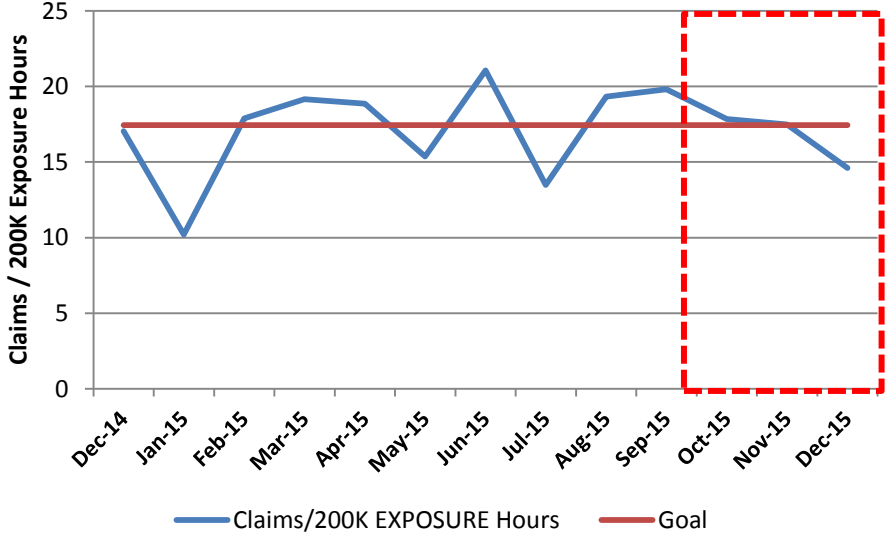
## Rail Complaints/100K Boardings



Line	FY 15 Actual	FY16 YTD Actual	FY16 Goal
Red/Purple	0.11	0.03	0.12
Blue	0.27	0.14	0.27
Green	0.32	0.23	0.31
Gold	0.34	0.23	0.34
Expo	0.38	0.20	0.40

# New Bus & Rail Worker's Compensation Claims

## Bus New Workers Compensation Claims/200K Exposure Hours



## Rail New Workers Compensation Claims /200K Exposure Hours

