

**Board Report**

---

**File #:** 2018-0012, **File Type:** Informational Report**Agenda Number:** 15.

---

**SYSTEM SAFETY, SECURITY AND OPERATIONS COMMITTEE  
MARCH 15, 2018****SUBJECT: MONTHLY UPDATE ON TRANSIT POLICING  
PERFORMANCE****ACTION: RECEIVE AND FILE****RECOMMENDATION**

RECEIVE AND FILE Monthly Update on Transit Policing Performance.

**ISSUE**

This report reflects January 2018 performance data as reported under the transit policing deployment strategy which is a combination of in-house fare compliance officers, private security for fixed assets and a multi-agency law enforcement deployment strategy by the Los Angeles Police Department (LAPD), Los Angeles County Sheriff's Department (LASD), and Long Beach Police Department (LAPD). The information in this report summarizes system-wide Part 1 and Part 2 crime data, average emergency response times, assaults on bus operators, and Metro's fare compliance and homeless outreach efforts. The Six Key Performance Indicators (KPI) are System Wide Part 1 and Part 2 Crimes, Average Emergency Response Times, Percentage of Time Spent on the System, Ratio of Staffing Levels vs Vacant Assignments, Ratio of Proactive vs Dispatched Activity, and Number of Grade Crossing Operations.

**DISCUSSION****Crime stats are as follows:****January**

Part 1 crime activity decreased by 19.7% system-wide compared to the same period last year. The total Part 1 crimes equated to 3.3 crimes per 1 million boardings.

Part 2 crime activity decreased by 22.1% system-wide compared to the same period last year.

**January Summary by Mode**

Part 1 crime on the rail system decreased by 11.5% compared to the same period last year. Part 1 crime on the bus system decreased by 35.6% (there were 16 less crimes committed than the same

period last year). The decrease in crime can be attributed to law enforcement analytic and proactive work on areas where crime was reported high.

**Bus Operator Assaults:**

There were nine (9) bus operator assaults reported in January, resulting in a 47.1% decrease from last year.

**Average Emergency Response Times:**

Emergency response times averaged 3.91 minutes for the month of January.

**Annual On-Board Customer Satisfaction Survey**

The agency thrives to improve customer satisfaction; as a result an annual On-Board Customer Satisfaction Survey is conducted. The results of the 2017 survey revealed:

- 90% of passengers feel safe while riding the bus.
- 79% of passengers feel safe while riding the rail.

**Physical Security Improvements:**

The Systems Security and Law Enforcement Department continues to provide a secure and safe environment for our patrons and employees. The physical security assessments for Metro's facilities started in January as projected. During the process, the assessment team evaluated 18 divisions and interviewed key division leaders and their staff. The team also conducted interviews with key Metro executives, ranging from Information Technology to Rail Operations and Security. The goal of the assessment is to identify lapses in physical security and to request funding to improve our posture across the agency.

The Physical Security Section, in conjunction with Transportation Security Administration, is currently planning to conduct another test of the explosive detection device during the month of March. In addition, there is coordination taking place with LAPD to provide secondary screening with a K9 team in the event the device registers an anomaly.

A meeting took place with the representative of the California Public Utilities Commission (CPUC) to prepare the annual submission of the Systems Security Plan (SSP). The SSP was submitted to the CPUC for review. After efficiently planning to support the Green Line Tie In project, the Physical Security Section is utilizing all available resources to successfully secure key sites.

**Significant Activities:**

***Los Angeles Police Department***

- **1/17/18-** Officers at Union Station were alerted of a domestic violence attack. Subject was detained and booked.

- **1/27/18-** While patrolling Union Station, an officer noticed a subject inflicting self-harm with a weapon. Officer was able to de-escalate the situation without further incident.
- **1/28/18-** Officers responded to the Red Line Hollywood/Highland Station for a battery call. Subject was arrested.

#### ***Los Angeles County Sheriff's Department***

- **1/8/18-** Deputies arrested a suspect at the Gold Line Irwindale Station for vehicle burglary.
- **1/17/18-** Deputies patrolling the Green Line Norwalk Station observed and heard a suspect threatening the victim. Subject was arrested.
- **1/24/18-** While patrolling the Blue Line Willowbrook/Rosa Parks Station, deputies encountered a subject drinking alcohol. It was subsequently determined that there was an outstanding warrant. Subject was arrested.

#### ***Long Beach Police Department***

- **1/17/18-** Officers encountered a subject who refused to pay the fare or leave the platform at the Blue Line Willow Station. Upon further investigation, officers located a large knife. Subject was arrested.
- **1/21/18-** Officers were flagged down regarding a strong-arm robbery at the Blue Line Wardlow Station. Subject was arrested.
- **1/24/18-** Officers responded to an assault with a deadly weapon call at the Blue Line Willow Station. Subject was arrested and booked.

#### **Community and Problem Oriented Policing Activities:**

Transit Law Enforcement visited multiple schools in Los Angeles County during the month of January. Law enforcement representatives discussed public transportation safety tips with students, faculty members, and parents.

#### **Metro's Ongoing Homelessness Outreach Efforts:**

In spring 2016, Metro created the Metro Homeless Task Force to address the displaced persons that have turned to Metro system and property for alternative shelter. Out of the Task Force, Metro created the Metro Transit Homeless Action Plan which was presented to the Metro Board of Directors in February 2017. The Action Plan's goals are to enhance the customer experience, maintain a safe and secure system, and provide coordinated outreach. Components of the plan include Metro's coordination with County and City Measure H and Measure HHH. The plan also called for the hiring of two C3 teams (County, City, Community) through the County Department of Health Services as indicated by Metro's Board of Directors. The C3 teams are to provide coordinated and responsive outreach to the homeless and to ultimately get them in housing resources.

#### **Metro's C3 Homeless Outreach Teams:**

Metro's C3 Homeless Outreach teams' twelve-month pilot program began on May 22, 2017, with

initial homeless outreach on the Red Line. Since the teams' commencement they have provided the following: 2,284 total unduplicated contacts, 464 of whom have been placed into permanent housing solutions.

**C3 Homeless Outreach May 22, 2017 through January 5, 2018:**

Performance Measure	Monthly Number Served	Fiscal YTD Number Served
Unduplicated individuals initiated contact (pre-engagement phase)	134	2,284
Unduplicated individuals engaged (engagement phase)	67	1,539
Unduplicated individuals who are provided services or who successfully attained referrals	67	821
Unduplicated individuals engaged who successfully attained an interim housing resource (this includes crisis and/or bridge housing)	34	208
Unduplicated individuals engaged who are successfully linked to a permanent housing program	24	237
Unduplicated individuals engaged who are permanently housed	2	19

**C3 Coordination with Law Enforcement**

With Metro System Security and Law Enforcement personnel as the lead, Metro's C3 teams coordinate with LAPD's Homeless Outreach and Protective Engagement (HOPE) Teams, LASD's Mental Evaluation Teams (MET), Long Beach PD, and Metro's Transit Security Officers, in an effort to engage the homeless and provide placement into services. These law enforcement entities provide gap service to the Red Line when the C3 Teams are off duty and provide outreach support for the rest of the system that is not part of the pilot program. LASD's MET teams consist of Deputies paired with clinicians and the Department of Health LAPD's HOPE teams consist of Officers who partner with LAHSA, the LA City Attorney's Office and the LA City Department of Sanitation for homeless outreach response. Efforts are underway to identify law enforcement's ability to streamline reporting methods in order to better compare reporting systems.

Los Angeles Police Department HOPE Teams

LAPD Transit Bureau homeless outreach totals the HOPE team contacts plus the patrol / Transit Services Division (TSD). Therefore, LAPD's January 2018 homeless outreach is the following:

Action	HOPE	TSD	TOTAL
Contacts	129	92	221
Referrals	48	5	53
5150 Hold	0	6	6
Mental Illness	20	5	25
Substance Abuse	12	1	13
Veterans	4	2	6

Shelter	3	0	3
Motel With Housing Plan	1	0	1
VA Housing	1	0	1
Return To Family	0	0	0
Transitional Long-Term Housing	0	0	0
Detox	1	0	1
Rehab	0	0	0

*Sheriff Mental Evaluation Team (MET) Contacts and Efforts*

Location/Action	Contacts
Bus Contacts	106
Rail Contacts	240
DMS Contacts	0
<b>TOTAL CONTACTS</b>	<b>346</b>
Transports to Outreach Services	36
5150 WIC Transports	7

Long Beach Police Department

Efforts continue to focus on preventing Willow Street Parking Station elevator from becoming an alternative form of shelter for the homeless. Subjects are constantly warned, provided City of Long Beach Homeless Resource Pocket guides, and offered transportation to Multi-Service Center. Additional officers were assigned on several morning shifts to address homeless issues raised by patrons. Subjects encountered were provided homeless resources forms and were offered Multi-Service Center services.

**Metro’s Encampment Protocol:**

LAPD HOPE and Sheriff MET teams are actively providing enforcement and outreach on city properties abutting Metro, while Metro is in the process of creating their own encampment protocol. Metro has met with LA City Prosecutor’s office to identify protocol requirements under the City Sanitation Department’s 56.11 to determine where and how to replicate a similar process at Metro where appropriate.

**Additional Resources and Partnership:**

Metro’s Homeless Action Plan integrates itself into the work provided under Measures H and HHH. Part of the E6 Strategies of Measure H includes 40 additional outreach workers to conduct outreach on Metro properties. It has been communicated by the County that the outreach workers will not go past the fare gates. A potential pilot program is being explored, where at one station, one line; outreach workers can go past the fare gates. These additional 40 outreach personnel were intended to start their outreach in January 2018, but that timeline has been pushed back due to hiring processes and industry demand for personnel. Metro is working with the County to develop best methods for outreach on Metro system and properties to have the broadest impact.

The County continues to work on their full breath launch of the 2-1-1 hotline to provide homeless resources. For the winter months, Metro has provided all law enforcement and Metro staff a winter shelter resource list for 24/7 operation.

Metro partnered with LAHSA in the 2018 LAHSA Homeless Count during January 24-26. The results of the count will be made public in June 2018.

Metro continues to work to further integrate working with the faith based community and with the LA County Department of Mental Health to best serve the homeless community.

**..Attachments**  
**ATTACHMENTS**

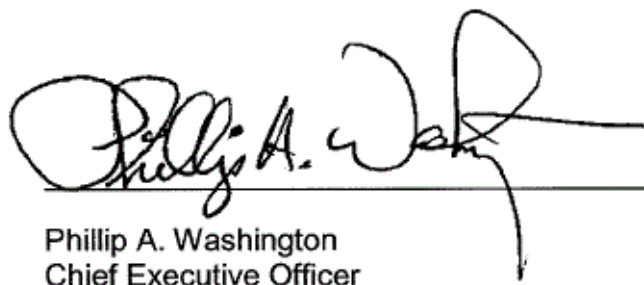
Attachment A - System-Wide Law Enforcement Overview January 2018

Attachment B - Supporting Crime Data January 2018

Attachment C - Key Performance Indicators January 2018

Prepared by: Alex Z. Wiggins, Chief, System Security and Law Enforcement,  
(213) 922-4433

Reviewed by: Stephanie Wiggins, Deputy Chief Executive Officer, (213) 922-1023



---

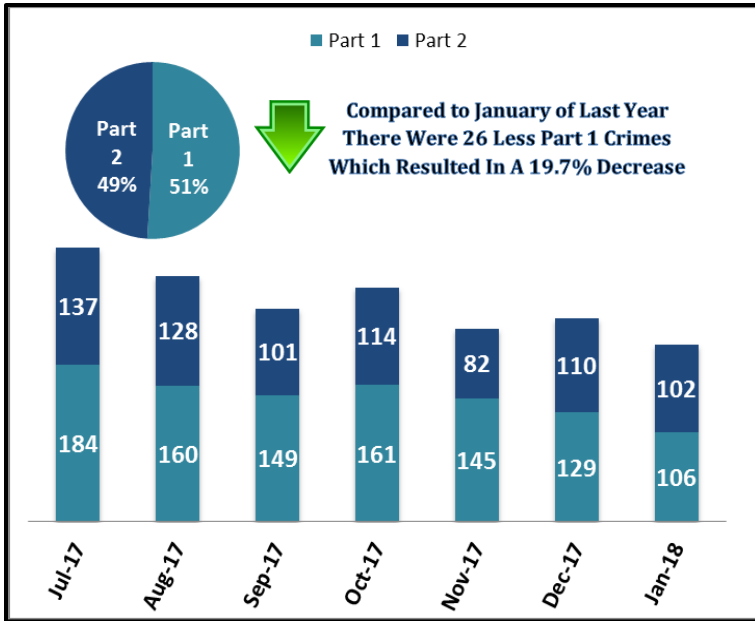
Phillip A. Washington  
Chief Executive Officer

# SYSTEM-WIDE LAW ENFORCEMENT OVERVIEW

JANUARY 2018

Attachment A

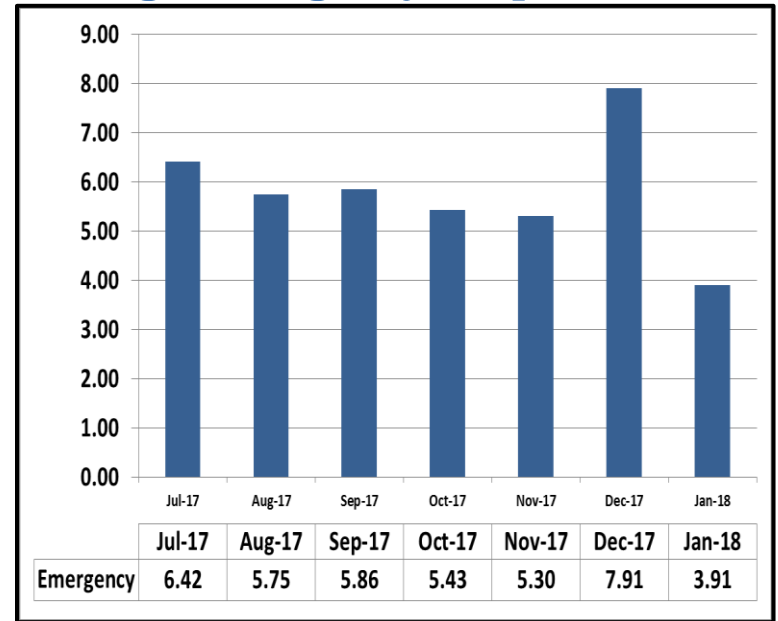
## Part 1 & Part 2 Crimes



For the month of January 2018, Part 1 crime activity is down by 19.7% system-wide compared to the same period last year. In a monthly contrast, there were 23 less Part 1 crimes in January than in December, resulting in a 17.8% decrease.

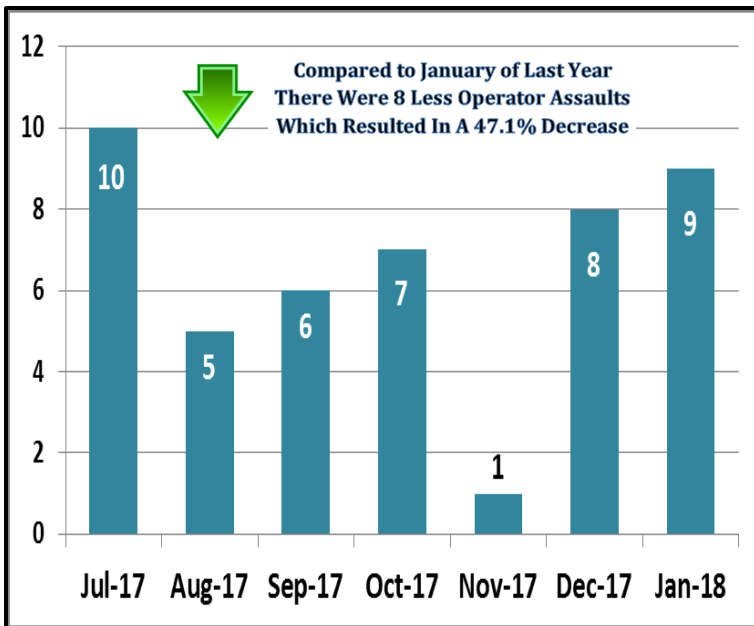
Part 2 crime activity is down 22.1% system-wide compared to the same period last year. In a monthly contrast, there were 8 less Part 2 crimes in January than in December, resulting in a 7.3% decrease.

## Average Emergency Response Times



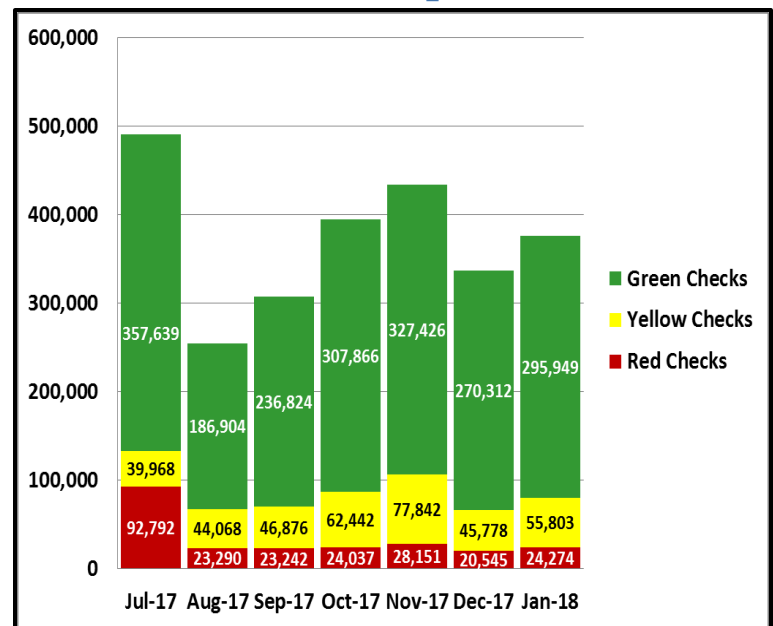
Average emergency response times were 3.91 mins.

## Bus Operator Assaults



There were a total of 9 Bus Operator Assaults. Comparing the Bus Operator Assaults from the same period last year, there were 17 Operator Assaults last year resulting in a 47.1% decrease.

## Fare Compliance



**Green Checks**- Occurs when a patron has valid fare

**Yellow Checks**- Occurs when a patron has valid fare, but did not tap at transfer station

**Red Checks**- Occurs when a patron has invalid fare

# Blue Line - January 2018

ATTACHMENT B

REPORTED CRIME				
PART 1 CRIMES	LAPD	LASD	LBPD	FYTD
Homicide	0	0	0	1
Rape	0	0	0	2
Robbery	1	2	1	38
Agg Assault	1	2	4	30
Agg Assault on Op	0	0	0	0
Burglary	0	0	1	3
Larceny	2	6	2	69
Bike Theft	0	0	0	5
Motor Vehicle Theft	0	1	0	9
Arson	0	0	0	1
<b>SUB-TOTAL</b>	<b>4</b>	<b>11</b>	<b>8</b>	<b>158</b>
Selected Part 2 Crimes				
Battery	6	4	7	66
Battery Rail Operator	0	0	0	0
Sex Offenses	1	0	0	8
Weapons	0	0	3	13
Narcotics	0	0	2	23
Trespassing	0	1	0	6
Vandalism	0	2	1	8
<b>SUB-TOTAL</b>	<b>7</b>	<b>7</b>	<b>13</b>	<b>124</b>
<b>TOTAL</b>	<b>11</b>	<b>18</b>	<b>21</b>	<b>282</b>

PART 1 CRIMES PER STATION		
Station	JANUARY	FYTD
7th/Metro	2	7
Pico	0	3
Grand	0	0
San Pedro	1	2
Washington	0	5
Vernon	0	4
Slauson	2	12
Florence	1	12
Firestone	0	16
103rd St	1	3
Willowbrook	3	20
Compton	1	8
Artesia	4	14
Del Amo	0	10
Wardlow	2	7
Willow	3	14
PCH	0	5
Anaheim	0	6
5th St	1	4
1st St	0	0
Transit Mall	2	9
Pacific	0	0
Rail Yard	0	0
<b>Total</b>	<b>23</b>	<b>161</b>

ARRESTS				
TYPE	LAPD	LASD	LBPD	FYTD
Felony	0	5	14	140
Misdemeanor	0	19	141	922
<b>TOTAL</b>	<b>0</b>	<b>24</b>	<b>155</b>	<b>1,062</b>

CITATIONS				
TYPE	LAPD	LASD	LBPD	FYTD
Other Citations	11	11	23	872
Vehicle Code Citations	0	33	93	802
<b>TOTAL</b>	<b>11</b>	<b>44</b>	<b>116</b>	<b>1,674</b>

CALLS FOR SERVICE				
TYPE	LAPD	LASD	LBPD	FYTD
Routine	N/A*	68	11	642
Priority	N/A*	84	64	1,226
Emergency	N/A*	19	58	486
<b>TOTAL</b>	<b>0</b>	<b>171</b>	<b>133</b>	<b>2,354</b>

\*Currently unable to report stats by Rail Line

DISPATCHED VS. PROACTIVE			
TYPE	LAPD	LASD	LBPD
Dispatched	13%	4%	9%
Proactive	87%	96%	91%
<b>TOTAL</b>	<b>100%</b>	<b>100%</b>	<b>100%</b>

PERCENTAGE OF TIME ON THE RAIL SYSTEM	
LINE	JANUARY
Blue Line-LAPD	91%
Blue Line-LASD	94%
Blue Line-LBPD	70%

GRADE CROSSING OPERATIONS				
LOCATION	LAPD	LASD	LBPD	FYTD
Washington St	105			349
Flower St	36			124
103rd St	10			35
Wardlow Rd			2	9
Pacific Ave.				2
Willowbrook		2		2
Florence Station		7		11
Compton Station		3		7
Artesia Station		2		3
Long Beach Blvd			3	9
<b>TOTAL</b>	<b>151</b>	<b>14</b>	<b>5</b>	<b>551</b>

LEGEND
Los Angeles Police Department
Los Angeles County Sheriff's Department
Long Beach Police Department

Blue Line Highlights

The Blue Line had 4 less Part 1 crimes than the same period last year (27), which is a 14.8% decrease



# Green Line - January 2018

REPORTED CRIME			
PART 1 CRIMES	LAPD	LASD	FYTD
Homicide	0	0	0
Rape	0	0	0
Robbery	2	4	33
Agg Assault	0	3	10
Agg Assault on Op	0	0	0
Burglary	0	0	2
Larceny	1	2	24
Bike Theft	0	0	3
Motor Vehicle Theft	0	0	10
Arson	0	0	0
<b>SUB-TOTAL</b>	<b>3</b>	<b>9</b>	<b>82</b>
<b>Selected Part 2 Crimes</b>			
Battery	0	0	16
Battery Rail Operator	0	0	0
Sex Offenses	0	0	3
Weapons	0	0	5
Narcotics	0	0	10
Trespassing	0	0	0
Vandalism	0	0	10
<b>SUB-TOTAL</b>	<b>0</b>	<b>0</b>	<b>44</b>
<b>TOTAL</b>	<b>3</b>	<b>9</b>	<b>126</b>

PART 1 CRIMES PER STATION		
Station	JANUARY	FYTD
Redondo Beach	0	3
Douglas	0	2
El Segundo	0	2
Mariposa	0	0
Aviation	0	2
Hawthorne	1	4
Crenshaw	2	9
Vermont	1	6
Harbor	2	8
Avalon	1	8
Willowbrook	4	15
Long Beach	0	7
Lakewood	0	12
Norwalk	1	6
<b>Total</b>	<b>12</b>	<b>84</b>

ARRESTS			
TYPE	LAPD	LASD	FYTD
Felony	0	4	37
Misdemeanor	0	9	111
<b>TOTAL</b>	<b>0</b>	<b>13</b>	<b>148</b>

CITATIONS			
TYPE	LAPD	LASD	FYTD
Other Citations	2	2	72
Vehicle Code Citations	0	16	187
<b>TOTAL</b>	<b>2</b>	<b>18</b>	<b>259</b>

CALLS FOR SERVICE			
TYPE	LAPD	LASD	FYTD
Routine	N/A*	127	750
Priority	N/A*	53	414
Emergency	N/A*	6	80
<b>TOTAL</b>	<b>0</b>	<b>186</b>	<b>1244</b>

\*Currently unable to report stats by Rail Line

DISPATCHED VS. PROACTIVE		
TYPE	LAPD	LASD
Dispatched	14%	8%
Proactive	86%	92%
<b>TOTAL</b>	<b>100%</b>	<b>100%</b>

PERCENTAGE OF TIME SPENT ON THE RAIL SYSTEM	
LINE	JANUARY
Green Line-LAPD	87%
Green Line-LASD	91%

LEGEND	
Los Angeles County Sheriff's Department	
Los Angeles County Sheriff's Department	

Green Line Highlights

The Green Line had 5 more Part 1 crimes than the same period last year (7), which is a 71.4% increase

# Expo Line - January 2018

REPORTED CRIME			
PART 1 CRIMES	LAPD	LASD	FYTD
Homicide	0	0	0
Rape	0	0	0
Robbery	1	2	31
Agg Assault	1	1	12
Agg Assault on Op	0	0	0
Burglary	0	0	0
Larceny	7	0	79
Bike Thefts	1	0	15
Motor Vehicle Theft	0	0	0
Arson	0	0	0
<b>SUB-TOTAL</b>	<b>10</b>	<b>3</b>	<b>137</b>
<b>Selected Part 2 Crimes</b>			
Battery	6	0	21
Battery Rail Operator	0	0	0
Sex Offenses	1	0	4
Weapons	0	0	0
Narcotics	0	0	0
Trespassing	0	0	0
Vandalism	0	0	1
<b>SUB-TOTAL</b>	<b>7</b>	<b>0</b>	<b>26</b>
<b>TOTAL</b>	<b>17</b>	<b>3</b>	<b>163</b>

PART 1 CRIMES PER STATION		
Station	JANUARY	FYTD
7th/Metro	0	8
Pico	0	6
23rd St	0	0
Jefferson/USC	0	3
Expo/USC	1	3
Expo/Vermont	0	13
Expo/Western	1	31
Expo/Crenshaw	1	6
Farmdale	1	12
La Brea	2	8
La Cienega	1	5
Culver City	2	14
Palms	1	2
Expo/Westwood	0	3
Expo/Sepulveda	1	2
Expo/Bundy	1	9
26th St /Bergamot	0	4
17th St/SMC	0	4
D/T Santa Monica	1	5
Expo Rail Yard	0	0
<b>Total</b>	<b>13</b>	<b>138</b>

ARRESTS			
TYPE	LAPD	LASD	FYTD
Felony	0	0	15
Misdemeanor	1	2	14
<b>TOTAL</b>	<b>1</b>	<b>2</b>	<b>29</b>

CITATIONS			
TYPE	LAPD	LASD	FYTD
Other Citations	4	0	141
Vehicle Code Citations	0	0	4
<b>TOTAL</b>	<b>4</b>	<b>0</b>	<b>145</b>

CALLS FOR SERVICE			
TYPE	LAPD	LASD	FYTD
Routine	N/A*	17	209
Priority	N/A*	25	187
Emergency	N/A*	2	17
<b>TOTAL</b>	<b>0</b>	<b>44</b>	<b>413</b>

\*Currently unable to report stats by Rail Line

DISPATCHED VS. PROACTIVE		
TYPE	LAPD	LASD
Dispatched	16%	2%
Proactive	84%	98%
<b>TOTAL</b>	<b>100%</b>	<b>100%</b>

PERCENTAGE OF TIME SPENT ON THE RAIL SYSTEM	
LINE	JANUARY
Expo Line-LAPD	92%
Expo Line-LASD	84%

GRADE CROSSING OPERATIONS			
LOCATION	LAPD	LASD	FYTD
Exposition Blvd	14		104
Santa Monica		2	2
Culver City		1	1
<b>TOTAL</b>	<b>14</b>	<b>3</b>	<b>107</b>

LEGEND	
Los Angeles Police Department	
Los Angeles County Sheriff's Department	

Expo Line Highlights

The Expo Line had 11 less Part 1 crimes than the same period last year (24), which is a 45.8% decrease

# Red Line - January 2018

## REPORTED CRIME

PART 1 CRIMES	LAPD	FYTD
Homicide	0	0
Rape	0	2
Robbery	6	38
Agg Assault	3	16
Agg Assault on Op	0	0
Burglary	0	0
Larceny	11	71
Bike Theft	2	4
Motor Vehicle Theft	0	13
Arson	0	0
<b>SUB-TOTAL</b>	<b>22</b>	<b>144</b>
<b>Selected Part 2 Crimes</b>		
Battery	17	101
Battery Rail Operator	0	0
Sex Offenses	3	20
Weapons	0	0
Narcotics	0	0
Trespassing	0	3
Vandalism	3	10
<b>SUB-TOTAL</b>	<b>23</b>	<b>134</b>
<b>TOTAL</b>	<b>45</b>	<b>278</b>

## PART 1 CRIMES PER STATION

Station	JANUARY	FYTD
Union Station	2	10
Civic Center	1	6
Pershing Square	1	8
7th/Metro	1	5
Westlake	2	26
Wilshire/Vermont	1	9
Wilshire/Normandie	0	0
Vermont/Beverly	2	7
Wilshire/Western	0	0
Vermont/Santa Monica	1	6
Vermont/Sunset	2	7
Hollywood/Western	0	4
Hollywood/Vine	1	14
Hollywood/Highland	4	19
Universal	3	7
North Hollywood	1	16
Red Line Rail Yard	0	0
<b>Total</b>	<b>22</b>	<b>144</b>

## ARRESTS

TYPE	LAPD	FYTD
Felony	2	14
Misdemeanor	5	34
<b>TOTAL</b>	<b>7</b>	<b>48</b>

## CITATIONS

TYPE	LAPD	FYTD
Other Citations	41	158
Vehicle Code Citations	4	6
<b>TOTAL</b>	<b>45</b>	<b>164</b>

## CALLS FOR SERVICE

TYPE	LAPD
Routine	N/A*
Priority	N/A*
Emergency	N/A*
<b>TOTAL</b>	

\*Currently unable to report stats by Rail Line

## DISPATCHED VS. PROACTIVE

TYPE	LAPD
Dispatched	17%
Proactive	83%
<b>TOTAL</b>	<b>100%</b>

## PERCENTAGE OF TIME SPENT ON THE RAIL SYSTEM

LINE	JANUARY
Red Line- LAPD	89%

## LEGEND

Los Angeles Police Department

### Red Line Highlights

The Red Line had 4 more Part 1 crimes than the same period last year (18), which is a 22.2% increase

# Gold Line - January 2018

REPORTED CRIME			
PART 1 CRIMES	LAPD	LASD	FYTD
Homicide	0	0	0
Rape	0	0	0
Robbery	0	0	7
Agg Assault	1	1	7
Agg Assault on Op	0	0	0
Burglary	0	0	0
Larceny	0	2	29
Bike Theft	0	1	9
Motor Vehicle Theft	0	2	6
Arson	0	0	0
<b>SUB-TOTAL</b>	<b>1</b>	<b>6</b>	<b>58</b>
<b>Selected Part 2 Crimes</b>			
Battery	3	1	23
Battery Rail Operator	0	0	0
Sex Offenses	0	0	1
Weapons	0	0	1
Narcotics	0	1	3
Trespassing	0	0	2
Vandalism	2	0	16
<b>SUB-TOTAL</b>	<b>5</b>	<b>2</b>	<b>46</b>
<b>TOTAL</b>	<b>6</b>	<b>8</b>	<b>104</b>

PART 1 CRIMES PER STATION		
Station	JANUARY	FYTD
APU/Citrus College	1	6
Azusa Downtown	0	1
Irwindale	1	2
Duarte	0	1
Monrovia	1	6
Arcadia	0	1
Sierra Madre	0	1
Allen	0	0
Lake	0	1
Memorial Park	0	1
Del Mar	1	3
Fillmore	0	1
South Pasadena	0	2
Highland Park	0	1
SW Museum	1	1
Heritage Square	0	1
Lincoln Heights	0	0
Chinatown	0	2
Union Station	0	4
Little Tokyo	0	1
Pico/Aliso	0	2
Mariachi	0	3
Soto	0	1
Indiana (both LAPD & LASD)	2	8
Maravilla	0	1
East LA	0	0
Atlantic	0	7
<b>Total</b>	<b>7</b>	<b>58</b>

ARRESTS			
TYPE	LAPD	LASD	FYTD
Felony	0	3	13
Misdemeanor	2	4	64
<b>TOTAL</b>	<b>2</b>	<b>7</b>	<b>77</b>

CITATIONS			
TYPE	LAPD	LASD	FYTD
Other Citations	7	2	203
Vehicle Code Citations	39	13	192
<b>TOTAL</b>	<b>46</b>	<b>15</b>	<b>395</b>

CALLS FOR SERVICE			
TYPE	LAPD	LASD	FYTD
Routine	N/A*	65	625
Priority	N/A*	76	542
Emergency	N/A*	5	56
<b>TOTAL</b>	<b>0</b>	<b>146</b>	<b>1,223</b>

\*Currently unable to report stats by Rail Line

DISPATCHED VS. PROACTIVE		
TYPE	LAPD	LASD
Dispatched	19%	3%
Proactive	81%	97%
<b>TOTAL</b>	<b>100%</b>	<b>100%</b>

PERCENTAGE OF TIME SPENT ON THE RAIL SYSTEM	
LINE	JANUARY
Gold Line-LAPD	92%
Gold Line-LASD	77%

GRADE CROSSING OPERATIONS			
LOCATION	LAPD	LASD	FYTD
Marmion Way	72		423
Arcadia Station		5	6
Sierra Madre		2	2
Irwindale		3	12
Filmore Station		23	51
Monrovia		7	17
Memorial		10	19
Magnolia Ave			1
Duarte Station		12	15
City Of Azusa		11	14
South Pasadena		20	27
Allen			1
City Of East LA		31	35
Figueroa St	48		129
<b>TOTAL GOAL= 10</b>	<b>120</b>	<b>124</b>	<b>752</b>

LEGEND
Los Angeles Police Department
Los Angeles County Sheriff's Department

**Gold Line Highlights**

The Gold Line had 4 less Part 1 crime than the same period last year (11), which is a 36.4% decrease

# Orange Line - January 2018

REPORTED CRIME		
PART 1 CRIMES	LAPD	FYTD
Homicide	0	0
Rape	0	0
Robbery	0	7
Agg Assault	0	3
Agg Assault on Op	0	0
Burglary	0	0
Larceny	0	5
Bike Theft	0	0
Motor Vehicle Theft	0	1
Arson	0	0
<b>SUB-TOTAL</b>	<b>0</b>	<b>16</b>
<b>Selected Part 2 Crimes</b>		
Battery	0	9
Battery Bus Operator	0	0
Sex Offenses	0	2
Weapons	0	0
Narcotics	0	0
Trespassing	0	0
Vandalism	1	3
<b>SUB-TOTAL</b>	<b>1</b>	<b>14</b>
<b>TOTAL</b>	<b>1</b>	<b>30</b>

PART 1 CRIMES PER STATION		
Station	JANUARY	FYTD
North Hollywood	0	7
Laurel Canyon	0	0
Valley College	0	0
Woodman	0	0
Van Nuys	0	2
Sepulveda	0	1
Woodley	0	0
Balboa	0	2
Reseda	0	2
Tampa	0	0
Pierce College	0	0
De Soto	0	0
Canoga	0	1
Warner Center	0	1
Sherman Way	0	0
Roscoe	0	0
Nordhoff	0	0
Chatsworth	0	0
<b>Total</b>	<b>0</b>	<b>16</b>

ARRESTS		
TYPE	LAPD	FYTD
Felony	1	3
Misdemeanor	3	9
<b>TOTAL</b>	<b>4</b>	<b>12</b>

CITATIONS		
TYPE	LAPD	FYTD
Other Citations	307	2,010
Vehicle Code Citations	262	985
<b>TOTAL</b>	<b>569</b>	<b>2,995</b>

CALLS FOR SERVICE		
TYPE	LAPD	FYTD
Routine	N/A*	N/A*
Priority	N/A*	N/A*
Emergency	N/A*	N/A*
<b>TOTAL</b>	<b>0</b>	<b>0</b>

\*Currently unable to report stats by Bus Rapid Transit Line

DISPATCHED VS. PROACTIVE	
TYPE	LAPD
Dispatched	17%
Proactive	83%
<b>TOTAL</b>	<b>100%</b>

PERCENTAGE OF TIME SPENT ON THE BUS SYSTEM	
LINE	JANUARY
Orange Line- LAPD	85%

LEGEND
Los Angeles Police Department

Orange Line Highlights

The Orange Line had 1 less Part 1 crimes than the same period last year (1), which is a 100% decrease

# Silver Line - January 2018

REPORTED CRIME			
PART 1 CRIMES	LAPD	LASD	FYTD
Homicide	0	0	0
Rape	0	0	0
Robbery	0	0	0
Agg Assault	1	0	1
Agg Assault on Op	0	0	0
Burglary	0	0	0
Larceny	0	0	2
Bike Theft	1	0	1
Motor Vehicle Theft	0	0	0
Arson	0	0	0
<b>SUB-TOTAL</b>	<b>2</b>	<b>0</b>	<b>4</b>
<b>Selected Part 2 Crimes</b>			
Battery	3	0	5
Battery Bus Operator	1	0	1
Sex Offenses	0	0	1
Weapons	0	0	0
Narcotics	0	0	0
Trespassing	0	0	0
Vandalism	0	0	0
<b>SUB-TOTAL</b>	<b>4</b>	<b>0</b>	<b>7</b>
<b>TOTAL</b>	<b>6</b>	<b>0</b>	<b>11</b>

PART 1 CRIMES PER STATION		
Station	JANUARY	FYTD
El Monte	0	0
Cal State LA	0	0
LAC/USC	0	0
Alameda	1	1
Downtown	0	2
37th St/USC	0	0
Slauson	0	0
Manchester	0	0
Harbor Fwy	1	1
Rosecrans	0	0
Harbor/Gateway	0	0
Carson	0	0
PCH	0	0
San Pedro	0	0
<b>Total</b>	<b>2</b>	<b>4</b>

ARRESTS			
TYPE	LAPD	LASD	FYTD
Felony	0	0	3
Misdemeanor	2	0	13
<b>TOTAL</b>	<b>2</b>	<b>0</b>	<b>16</b>

CITATIONS			
TYPE	LAPD	LASD	FYTD
Other Citations	216	0	1,983
Vehicle Code Citations	224	0	1,414
<b>TOTAL</b>	<b>440</b>	<b>0</b>	<b>3,397</b>

CALLS FOR SERVICE			
TYPE	LAPD	LASD	FYTD
Routine	N/A*	2	11
Priority	N/A*	2	6
Emergency	N/A*	0	2
<b>TOTAL</b>	<b>0</b>	<b>4</b>	<b>19</b>

\*Currently unable to report stats by Bus Rapid Transit Line

DISPATCHED VS. PROACTIVE		
TYPE	LAPD	LASD
Dispatched	15%	0%
Proactive	85%	100%
<b>TOTAL</b>	<b>100%</b>	<b>100%</b>

PERCENTAGE OF TIME SPENT ON THE BUS SYSTEM	
LINE	JANUARY
Silver Line- LAPD	83%
Silver Line- LASD	63%

LEGEND	
Los Angeles Police Department	
Los Angeles County Sheriff's Department	

Silver Line Highlights

The Silver Line had 1 more Part 1 crime than the same period last year (1), which is a 100% increase

# Bus Patrol - January 2018

REPORTED CRIME			
PART 1 CRIMES	LASD	LAPD	FYTD
Homicide	0	0	0
Rape	0	0	3
Robbery	2	6	118
Agg Assault	2	2	68
Agg Assault on Op	0	0	3
Burglary	0	0	2
Larceny	0	13	205
Bike Theft	0	2	9
Motor Vehicle Theft	0	0	19
Arson	0	0	0
<b>SUB-TOTAL</b>	<b>4</b>	<b>23</b>	<b>427</b>
<b>Selected Part 2 Crimes</b>			
Battery	1	14	205
Battery Bus Operator	3	5	49
Sex Offenses	0	4	44
Weapons	0	0	3
Narcotics	0	0	4
Trespassing	0	0	4
Vandalism	3	3	43
<b>SUB-TOTAL</b>	<b>7</b>	<b>26</b>	<b>352</b>
<b>TOTAL</b>	<b>11</b>	<b>49</b>	<b>779</b>

LASD's Part 1 Crimes per Sector		
Sector	JANUARY	FYTD
Westside	2	8
San Fernando	0	2
San Gabriel Valley	1	14
Gateway Cities	0	5
South Bay	1	11
<b>Total</b>	<b>4</b>	<b>40</b>

LAPD's Part 1 Crimes per Sector		
Sector	JANUARY	FYTD
<b>Valley Bureau</b>		
Van Nuys	1	8
West Valley	1	9
North Hollywood	0	9
Foothill	0	4
Devonshire	1	3
Mission	0	6
Topanga	0	3
<b>Central Bureau</b>		
Central	2	29
Rampart	1	21
Hollenbeck	0	4
Northeast	0	2
Newton	2	34
<b>West Bureau</b>		
Hollywood	1	8
Wilshire	0	23
West LA	0	7
Pacific	0	8
Olympic	1	33
<b>Southwest Bureau</b>		
Southwest	5	67
Harbor	0	13
77th Street	8	75
Southeast	0	26
<b>Total</b>	<b>23</b>	<b>392</b>
<b>Total Part 1 Crimes</b>	<b>27</b>	<b>432</b>

ARRESTS			
TYPE	LASD	LAPD	FYTD
Felony	2	2	31
Misdemeanor	9	3	146
<b>TOTAL</b>	<b>11</b>	<b>5</b>	<b>177</b>

CITATIONS			
TYPE	LASD	LAPD	FYTD
Other Citations	0	11	156
Vehicle Code Citations	55	0	486
<b>TOTAL</b>	<b>55</b>	<b>11</b>	<b>642</b>

CALLS FOR SERVICE			
TYPE	LASD	LAPD	FYTD
Routine	78	234	1,920
Priority	125	261	2,426
Emergency	8	73	663
<b>TOTAL</b>	<b>211</b>	<b>568</b>	<b>5,009</b>

DISPATCHED VS. PROACTIVE		
TYPE	LASD	LAPD
Dispatched	2%	15%
Proactive	98%	85%
<b>TOTAL</b>	<b>100%</b>	<b>100%</b>

PERCENTAGE OF TIME SPENT ON THE BUS SYSTEM	
LINE	JANUARY
LASD BUS	83%
LAPD BUS	88%

LEGEND	
Los Angeles Police Department	
Los Angeles County Sheriff's Department	

Bus Patrol

There were 16 less Part 1 crimes than the same period last year (43), which is a 37.2% decrease

# Union Station - January 2018

REPORTED CRIME		
PART 1 CRIMES	LAPD	FYTD
Homicide	0	0
Rape	0	0
Robbery	0	0
Agg Assault	1	7
Agg Assault on Op	0	0
Burglary	0	0
Larceny	7	34
Bike Theft	0	0
Motor Vehicle Theft	0	4
Arson	0	0
<b>SUB-TOTAL</b>	<b>8</b>	<b>45</b>
<b>Selected Part 2 Crimes</b>		
Battery	6	19
Battery Rail Operator	0	0
Sex Offenses	0	1
Weapons	0	0
Narcotics	0	0
Trespassing	6	7
Vandalism	1	2
<b>SUB-TOTAL</b>	<b>13</b>	<b>29</b>
<b>TOTAL</b>	<b>21</b>	<b>74</b>



Westside

Eastside

ARRESTS		
TYPE	LAPD	FYTD
Felony	2	15
Misdemeanor	6	30
<b>TOTAL</b>	<b>8</b>	<b>45</b>

CITATIONS		
TYPE	LAPD	FYTD
Other Citations	0	70
Vehicle Code Citations	0	2
<b>TOTAL</b>	<b>0</b>	<b>72</b>

CALLS FOR SERVICE		
TYPE	LAPD	FYTD
Routine	N/A*	N/A*
Priority	N/A*	N/A*
Emergency	N/A*	N/A*
<b>TOTAL</b>	<b>0</b>	<b>0</b>

\*Currently unable to report stats by Union Station

DISPATCHED VS. PROACTIVE	
TYPE	LAPD
Dispatched	23%
Proactive	77%
<b>TOTAL</b>	<b>100%</b>

PERCENTAGE OF TIME SPENT AT UNION STATION	
LOCATION	LAPD
Union Station	85%

Union Station Highlights

Union Station had 2 more Part 1 crime than the same period last year (6), which is a 33.3% increase

LEGEND	
Los Angeles Police Department	

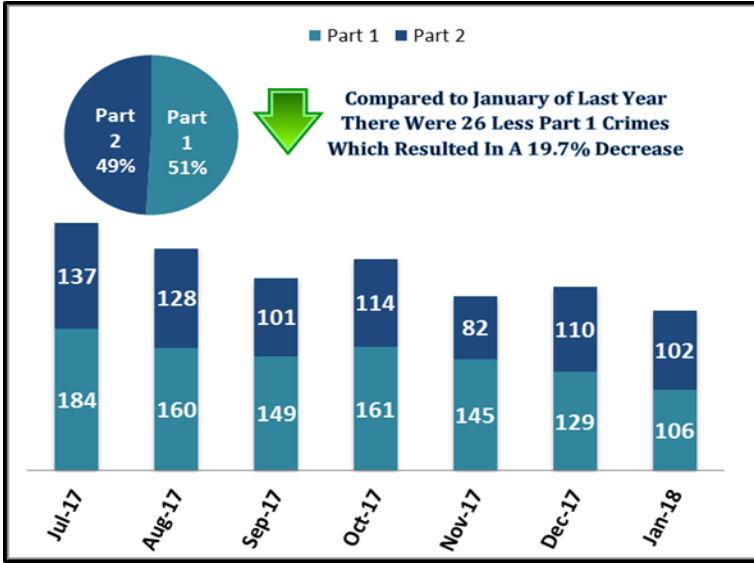


# Key Performance Indicators

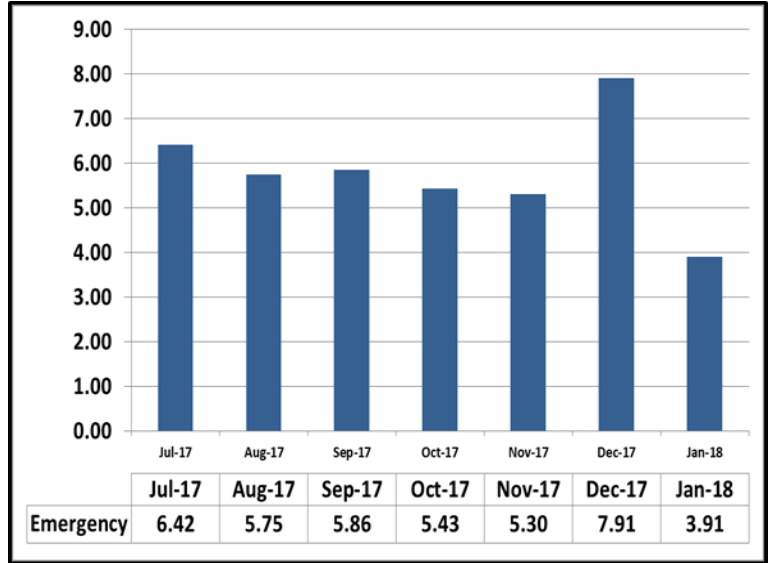
JANUARY 2018

Attachment C

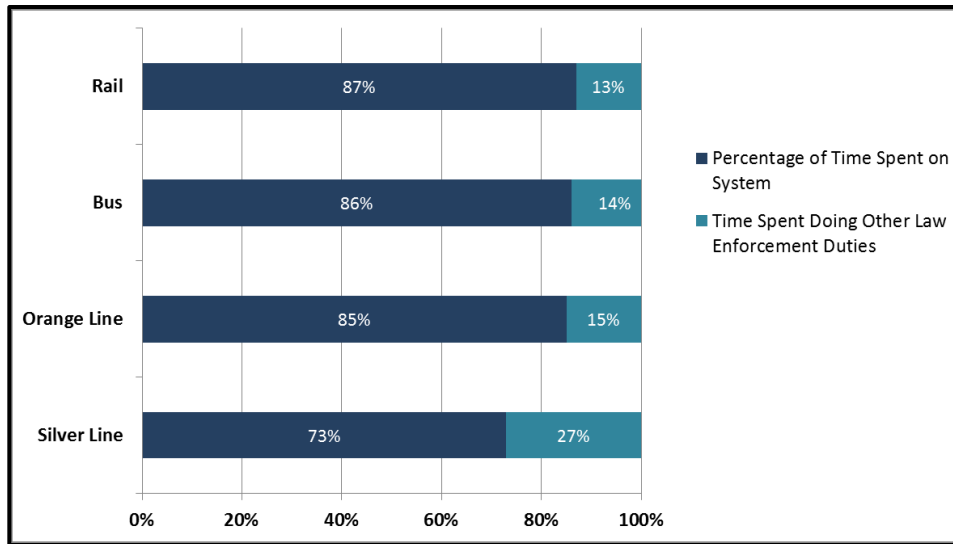
## System Wide Part 1 & Part 2 Crimes



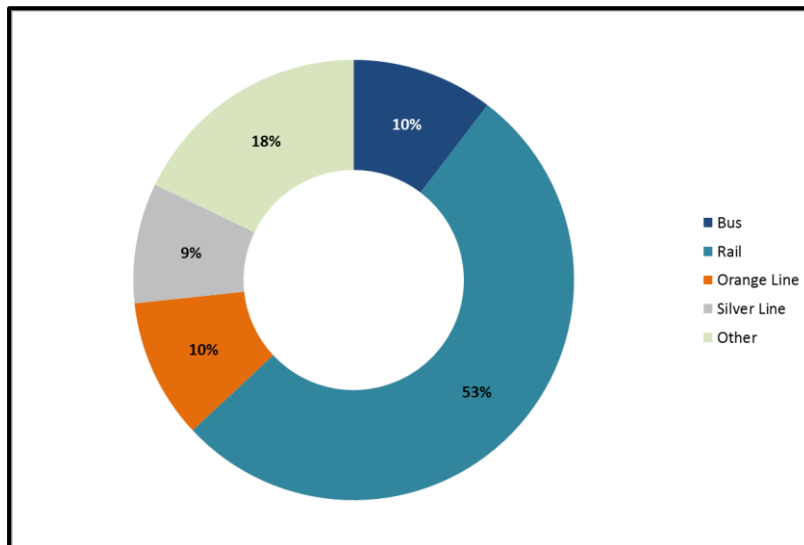
## Average Emergency Response Times



## Percentage of Time Spent on the System



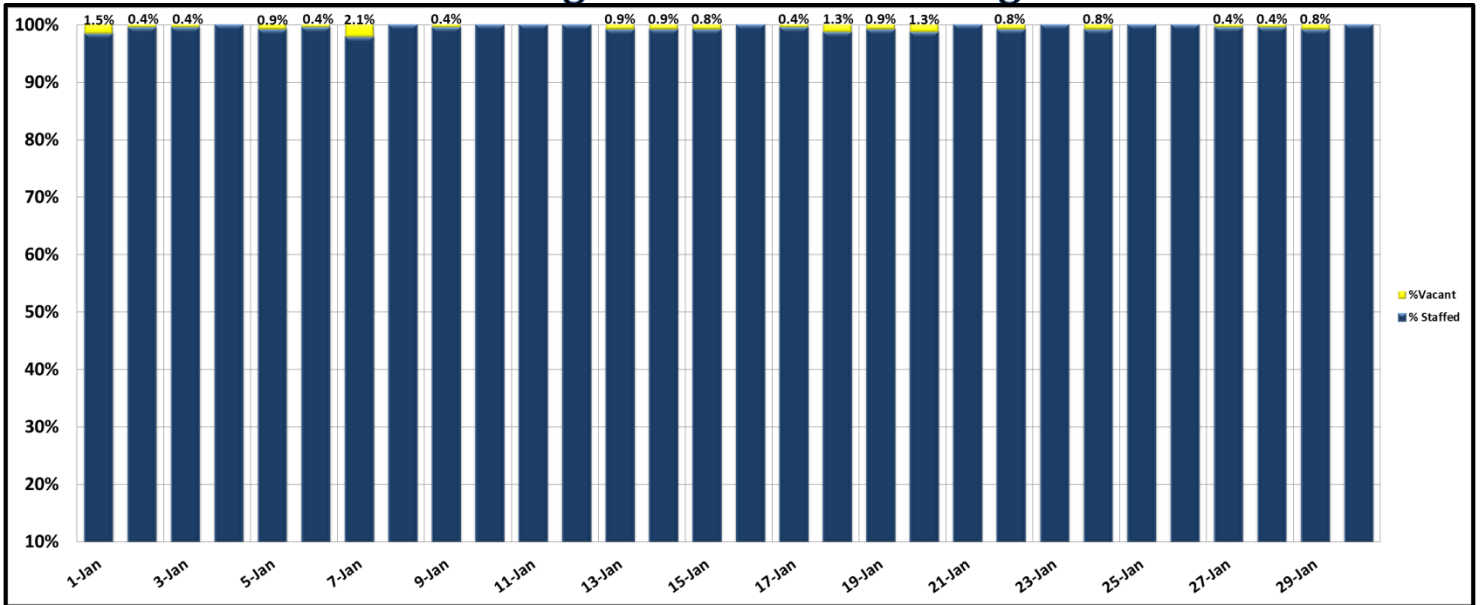
## Percentage of Time Spent on the System as a Whole



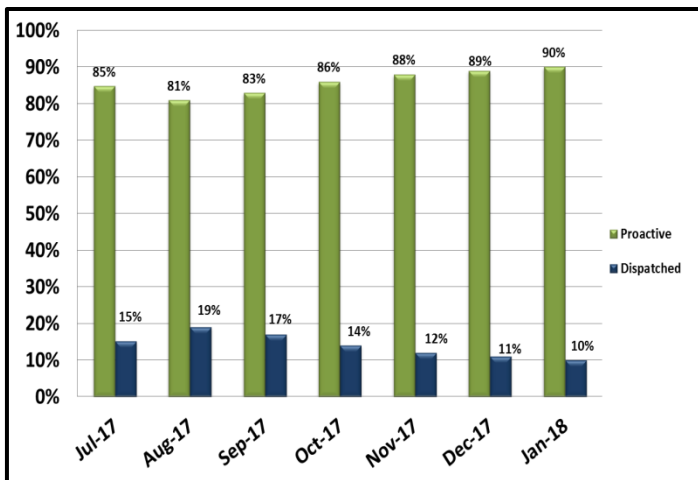
# Key Performance Indicators

JANUARY 2018

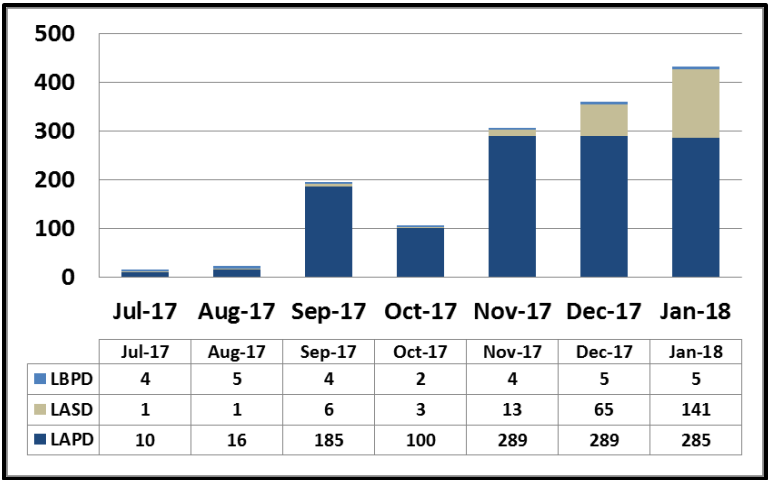
## Ratio of Staffing Levels vs Vacant Assignments



## Ratio of Proactive vs Dispatched Activity



## Grade Crossing Operations



### Grade Crossing Operation Locations January:

1. Blue Line Stations (170)
2. Expo Line Stations (17)
3. Gold Line Stations (244)