



**Board Report**

---

**File #:** 2018-0089, **File Type:** Oral Report / Presentation

**Agenda Number:** 33.

---

**CONSTRUCTION COMMITTEE  
MARCH 15, 2018**

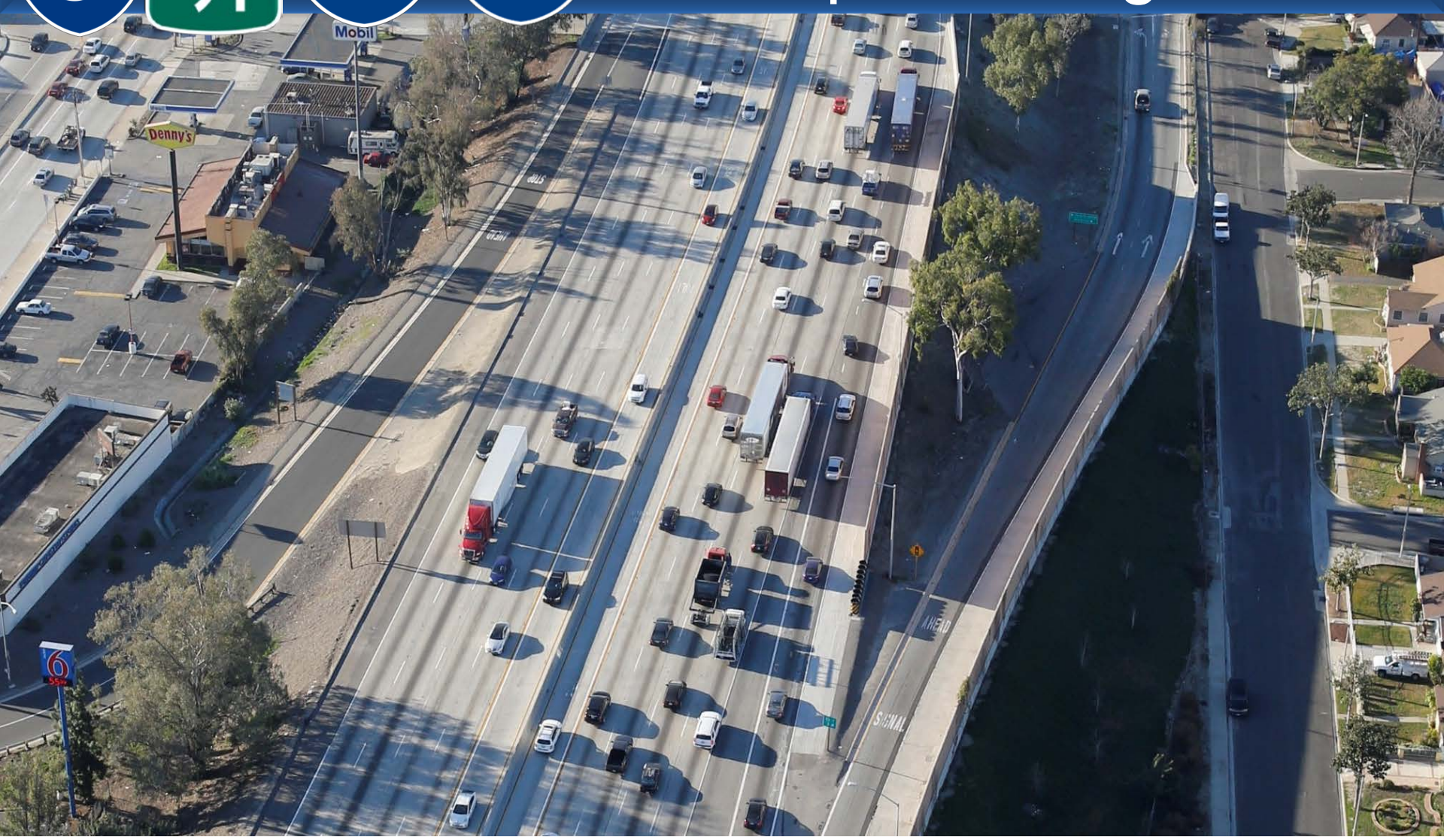
**SUBJECT: 605 HOT SPOTS**

**ACTION: RECEIVE ORAL UPDATE**

**RECOMMENDATION**

RECEIVE oral update on 605 Hot Spots.

# “Hot Spots” Program





# “Hot Spots” Program

## Program Summary

- 2012 Feasibility Study
- Identified congestion “hot spots” along I-5, SR-91, I-405, and I-605
- Freeway widening/additional lanes, ramp reconfigurations, arterial intersection enhancements, signage, and safety features
- Planning studies and environmental documents are in progress for various projects
- Estimated total cost of projects in the corridor: \$5+ billion
- Measure R Funding: \$590 Million
- Measure M Funding: \$ 1 Billion





# "Hot Spots" Program

I-605/Valley Blvd.

SR-60/7th Ave.

I-605/Beverly Blvd.

SR-91/I-605

SR-91/Central Ave.

SR-91/Wilmington

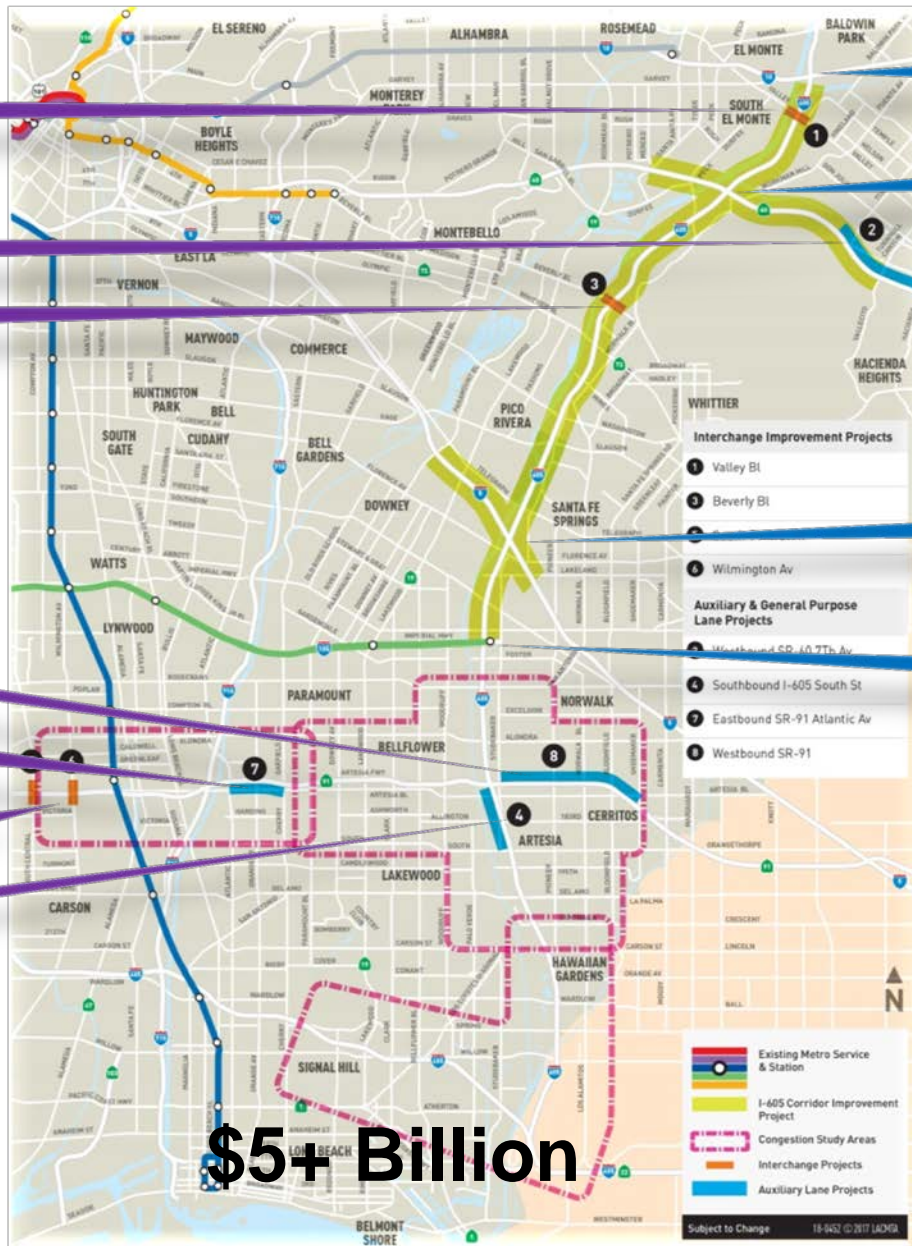
I-605/South St.

I-605/I-10

I-605/SR-60

I-605/I-5

I-605/I-105



+ Over 30 Arterial Intersection Improvements

## \$5+ Billion



### Metro



# “Hot Spots” Program

## Early Action Projects

### Freeways

- Seven Projects ranging from \$12-\$80 million
- Interchange improvements and auxiliary lanes
- Simple environmental clearance (e.g. CE)
- Timeline: 3-5 years

### Arterials

- \$136 Million allocated in Measure R– more funds in Measure M
- \$84.5 Million programmed to date (30+ projects)
- Metro or local agencies will advance the projects
- All local project construction by local agencies





# Valley Blvd.



New Intersection

Reconfigure Valley Blvd.

New On-Ramp

Widen Temple St./Rt. Turn Lane

2018: PAED/PS&E  
2020: Construction

Valley Inn

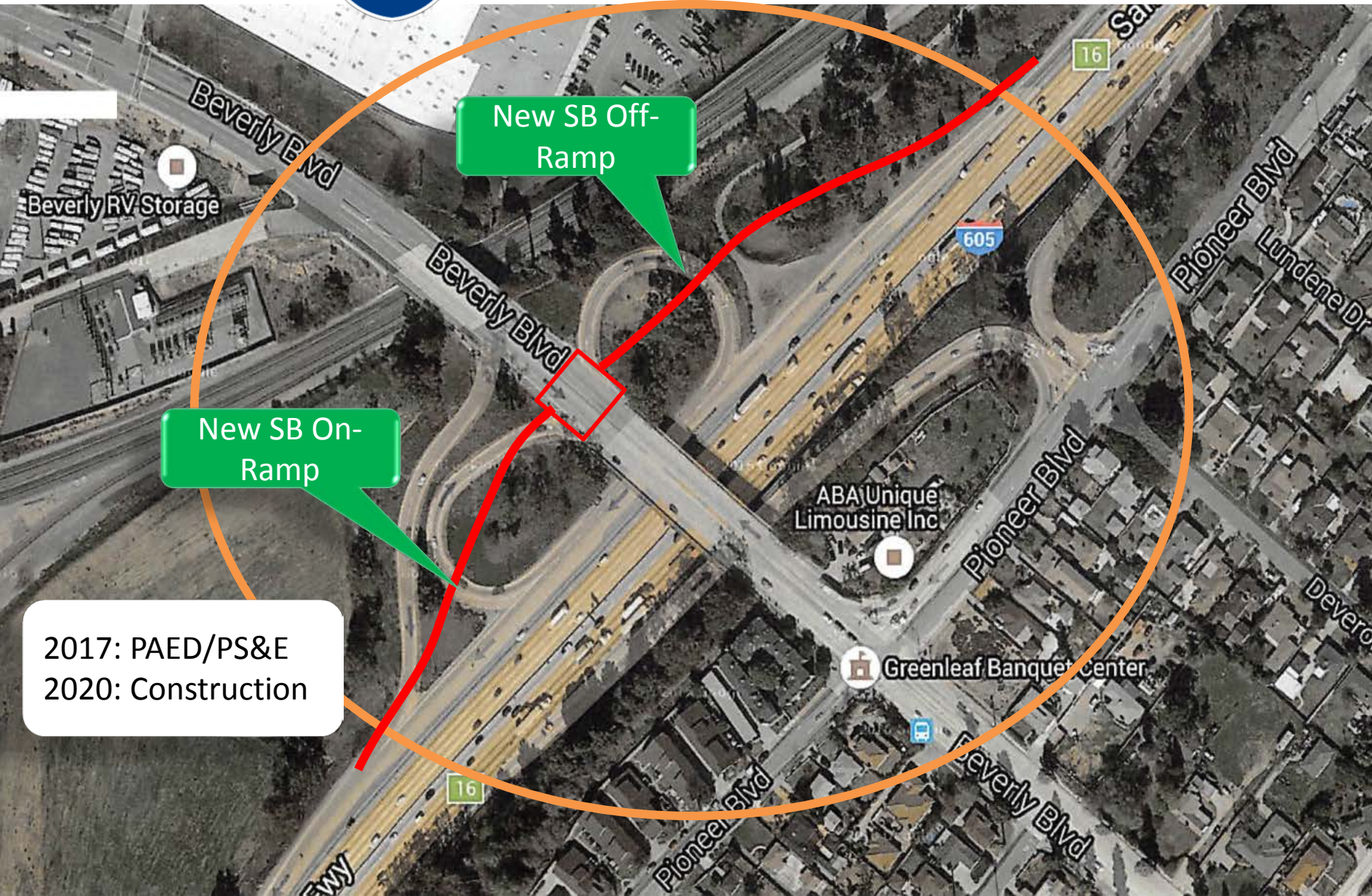
El Taco-Nazo  
Counter-serve,  
Baja-style Mexican food

Frimand's Public School





# Beverly Blvd.



New SB Off-Ramp

New SB On-Ramp

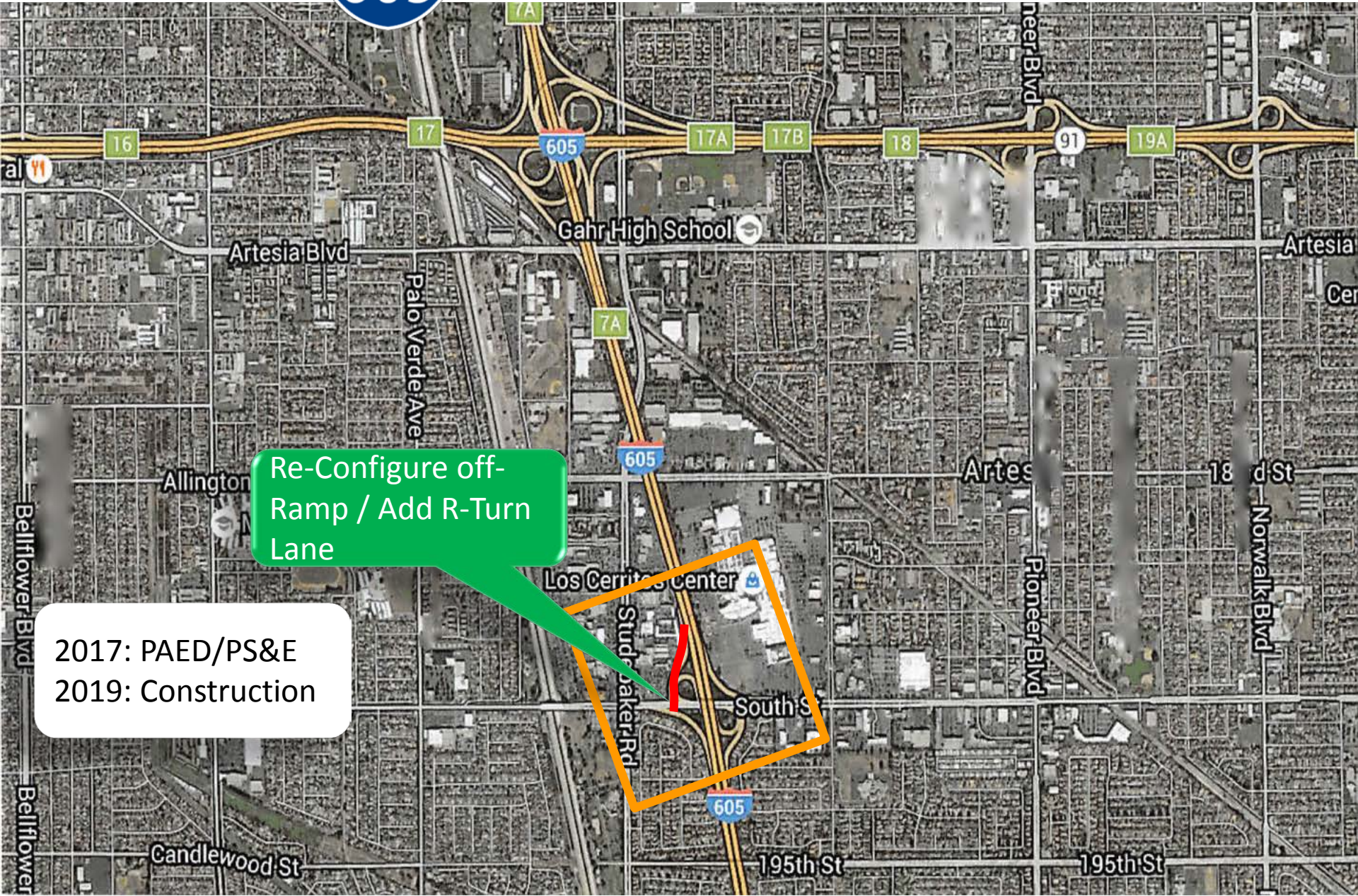
2017: PAED/PS&E  
2020: Construction







# South Street

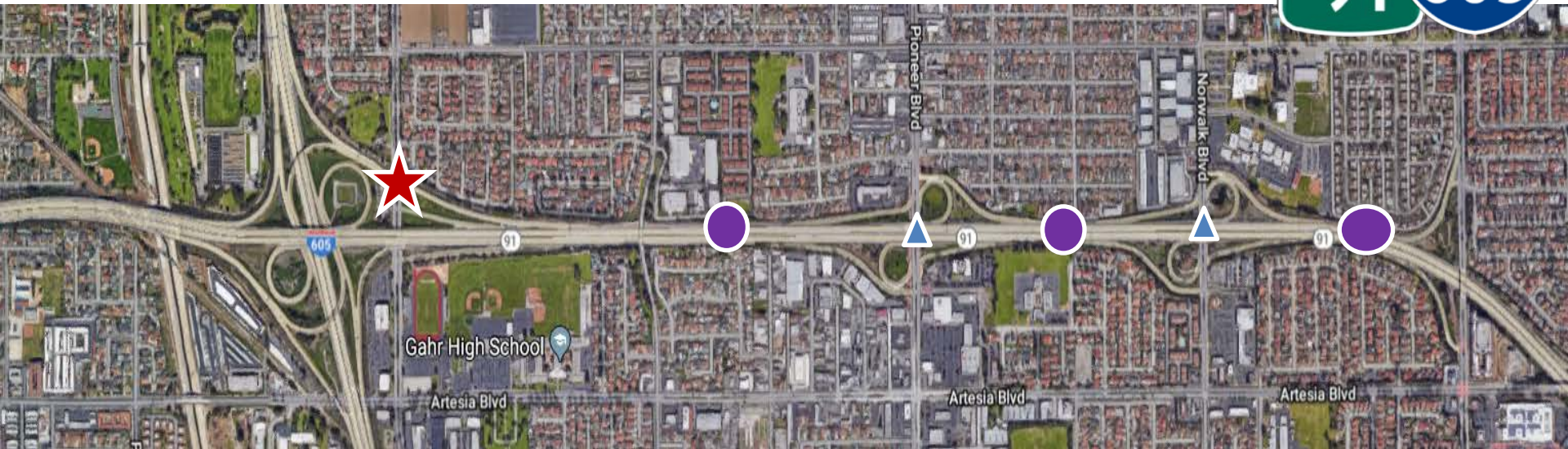


Re-Configure off-Ramp / Add R-Turn Lane

2017: PAED/PS&E  
2019: Construction



# WB SR-91 Improv. Project



- ★ Heavily congested Connector
  - 2 lane connector from westbound SR-91 splits to 1 lane southbound I-605 and 1 lane northbound I-605
- Short weave (merge) distance between each on- and off-ramp
- ▲ Deficient ramp configuration

# WB SR-91 Improvements Project



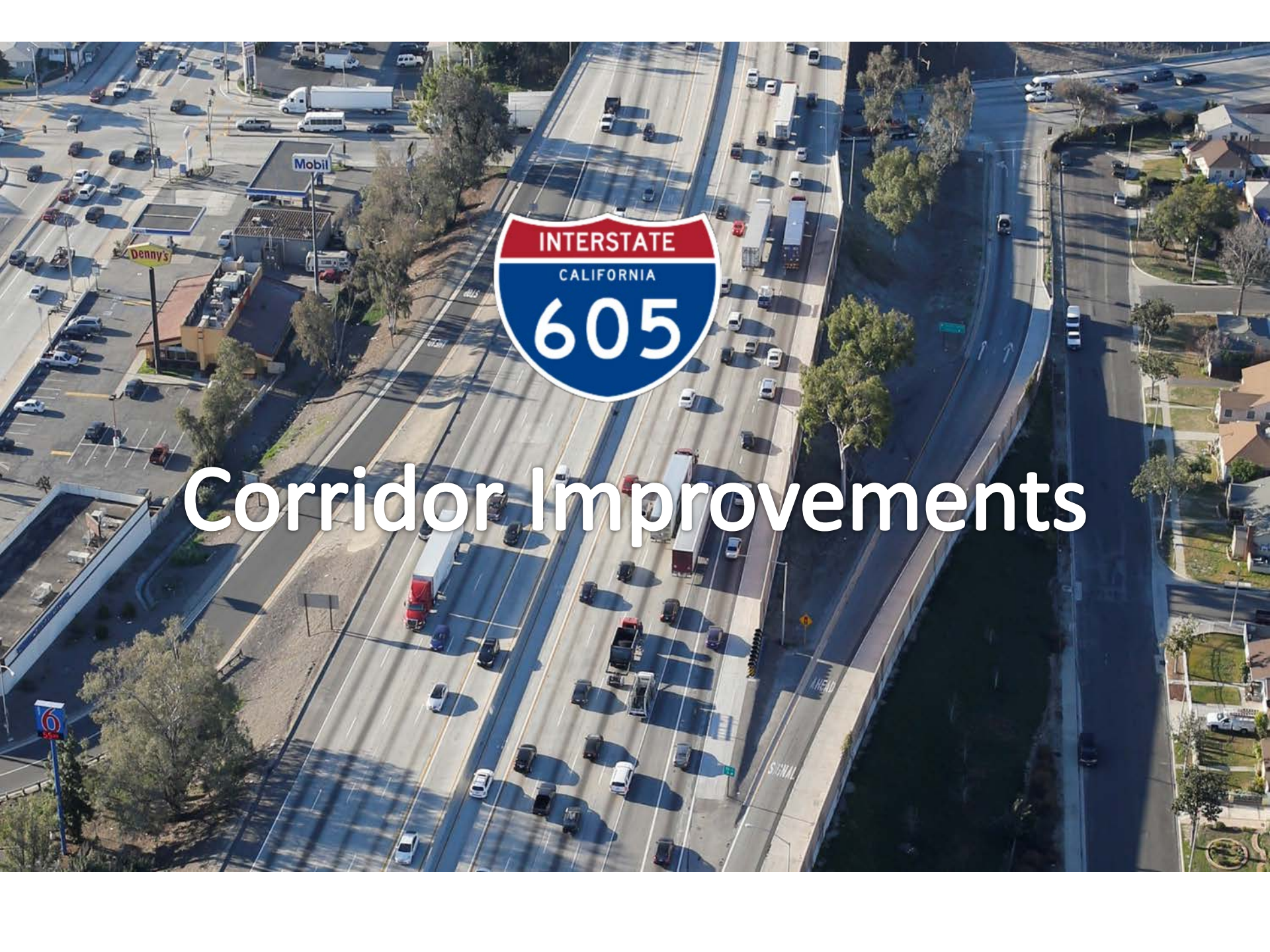
2015: PAED  
2019: PS&E  
2021: Construction

- Approximately 3 miles long
- Widen freeway and connector
- Improvements on Pioneer Blvd., Norwalk Blvd., Bloomfield Ave., and Artesia Blvd.





# Corridor Improvements



# I-605 Corridor Improvements



## Project Goals

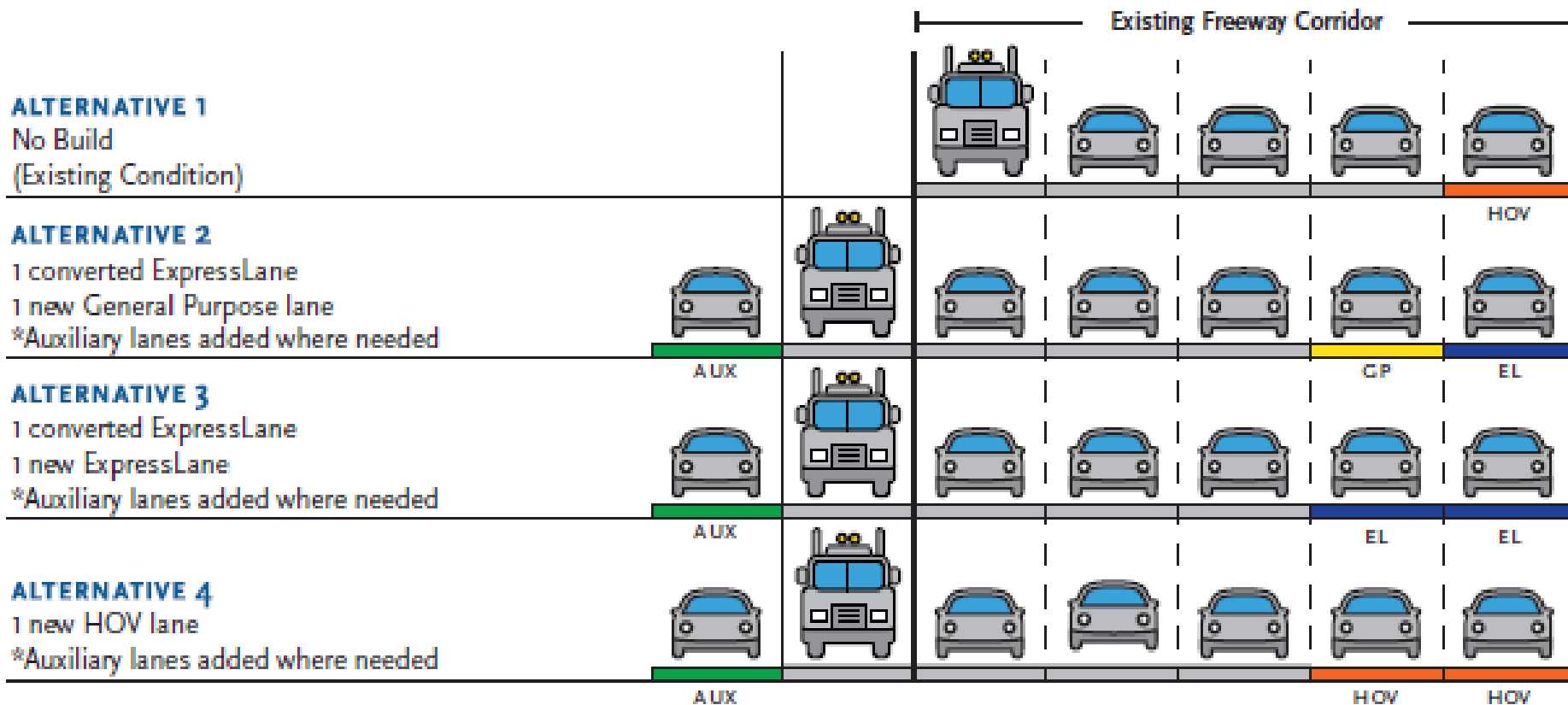
- Ease congestion and improve overall throughput
- Improve freeway/interchange operations, connectivity, mobility, and travel times
- Enhance safety

## Timeline

- Fall 2015: I-605 Corridor EIR/EIR started
- December 2016: Scoping comments by the Environmental Protection Agency (EPA) requested consideration of ExpressLanes
- January 2017: Metro Board of Directors approved the Countywide ExpressLanes Strategic Plan
- October 2017: Inclusion of ExpressLanes in the I-605 EIR/EIS Build Alternatives



# I-605 Corridor Improvements



# I-605 Corridor Improvements



## **I-605 Improvements:**

- Add one NB and one SB lane (GP, HOV, or ExpressLane)
- Add auxiliary lanes between on- and off-ramps
- Improvements to interchanges

## **SR-60 Improvements:**

- Westbound:
  - Add one GP lane from I-605/SR-60 Interchange to Hacienda Blvd.
  - Add auxiliary lanes ahead of the I-605/SR-60 interchange
- Eastbound:
  - Add one GP lane from I-605/SR-60 Interchange to 7<sup>th</sup> Ave.

## **I-5 Improvements:**

- NB and SB: Add new HOV lanes from Florence Av to Rio Hondo Channel
- Add auxiliary lanes as needed between on- and off-ramps
- Improvements to interchanges



## HOV/EL Direct Connectors Being Considered

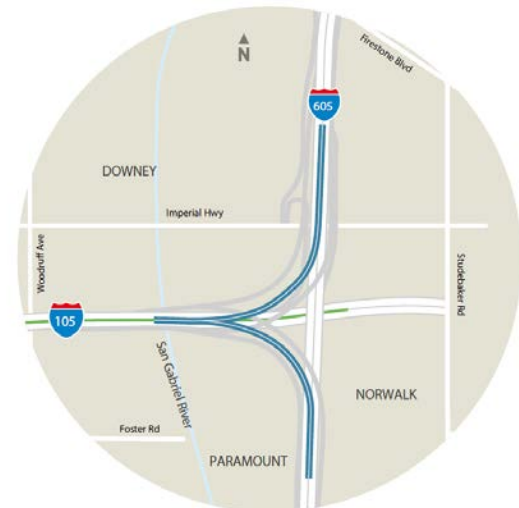
### I-605/I-10 Direct Connectors:

- Add HOV or ExpressLane direct connector from north I-605 to west I-10 with reverse movement



### I-605/I-105 Direct Connectors:

- Add HOV or ExpressLane direct connectors from north I-605 to west I-105 with reverse movement
- Add HOV or ExpressLane direct connector from south I-605 to west I-105 with reverse movement



# I-605 Corridor Improvements



## Key Milestones: Environmental Process

PUBLIC  
SCOPING  
PERIOD  
COMPLETED  
*FALL 2016*

ENVIRONMENTAL  
ANALYSIS  
& TECHNICAL  
STUDIES  
*2017-2019*

We  
Are  
Here

RELEASE OF  
DRAFT EIR/EIS &  
PUBLIC HEARING  
*FALL 2019*

RESPOND TO  
COMMENTS &  
SELECT PREFERRED  
ALTERNATIVE  
*SPRING 2020*

FINAL  
EIR/EIS & RECORD  
OF DECISION  
*SPRING 2021*

## Outreach

- October and November 2016:
  - 6 public Scoping Meetings
  - 2 Agency Scoping Meetings
- Project briefings:
  - Corridor Cities
  - State and Federal elected officials in the Gateway Cities region
  - Agencies
- Community Update Meetings on February 6-8 in Pico Rivera, Norwalk, and Whittier





## Gateway Cities Highway Program Manager

### **Ernesto Chaves**

Sr. Director

213.418.3142

[chavese@metro.net](mailto:chavese@metro.net)

## I-605 Capital Improvements

### **Isidro Pánuco**

Project Manager

213.922.4091

[i605corridor@metro.net](mailto:i605corridor@metro.net)

[metro.net/605hotspots](http://metro.net/605hotspots)

## SR 91 & Arterial Programs

### **Carlos Montez**

Project Manager

213.922.4782

[wbsr91@metro.net](mailto:wbsr91@metro.net)

[metro.net/605hotspots](http://metro.net/605hotspots)

# Thank You!

