



## Board Report

File #: 2018-0260, File Type: Contract

Agenda Number: 21.

### PLANNING AND PROGRAMMING COMMITTEE JUNE 20, 2018

**SUBJECT: LOS ANGELES UNION STATION FORECOURT  
AND ESPLANADE IMPROVEMENTS**

**ACTION: APPROVE RECOMMENDATIONS**

#### **RECOMMENDATION**

CONSIDER:

- A. EXECUTE Modification No. 9 to Task Order No. PS2999200FFO2TO1 under Contract No. PS4010-3041-FF-XX, with Kleinfelder, Inc., for the Union Station Master Plan (USMP), to provide additional environmental services in the amount of \$58,293.80 increasing the Total Task Order Value from \$1,079,936.79 to \$1,138,230.59; and
- B. INCREASE Contract Modification Authority (CMA) for Task Order No. PS2999200FFO2TO1 for USMP by \$250,000, from \$250,000 to \$500,000, in support of additional services related to the Project.

#### **ISSUE**

The Metro Board of Directors certified the LAUS Forecourt and Esplanade Improvements (Project) Final Environmental Impact Report (FEIR) on March 1, 2018. Since then, staff has initiated design, stakeholder engagement and interagency coordination with the City of Los Angeles.

The Project has federal funding in place and is undergoing review under the National Environmental Policy Act (NEPA) with Caltrans as the Lead Agency. Caltrans has requested additional technical studies related to cultural resources and has advised that the project environmental clearance timeline will be delayed. Staff is requesting Contract Modification No. 9 and an increase in contract modification authority to cover the cost of the additional technical studies that are being requested by Caltrans, timeline extension, additional meetings, and coordination with the State Historic Properties Officer (SHPO) that will be required to secure the NEPA environmental clearance.

#### **DISCUSSION**

The project will reconfigure the public right-of-way in front of Union Station and the LAUS forecourt to expand pedestrian and bike facilities on Alameda and Los Angeles Street and create a civic plaza in

front of the station (Attachment D, Project Map). Staff has secured approximately \$20M in grant and matching funds (Attachment E, Funding Table) to design and implement all of the Project improvements with the exception of construction funds for the forecourt.

The Project elements include:

- Alameda Esplanade: Roadway configuration on Alameda Street between Arcadia Street and Cesar E. Chavez Avenue to narrow the roadway and widen pedestrian and bicyclist facilities.
- Los Angeles Crossing: Consolidated raised intersectional crossing at Alameda and Los Angeles Street, closure of a portion of Los Angeles Street north of the raised median (while maintaining two-way travel on Los Angeles Street in the portion south of the median) and closure of the northern LAUS driveway and a two-way bike path within the extended El Pueblo Plaza.
- LAUS Forecourt: Repurposing the existing surface parking lot as a new civic plaza with sustainable features.
- Arcadia Street: Repurposing the northern travel lane as a dedicated El Pueblo tour bus parking zone.

#### *Contract Modification*

Staff is requesting Contract Modification No. 9 in the amount of \$58,293.80 and an increase in CMA for up to \$250,000 to prepare additional cultural resources technical studies that are being requested by Caltrans (such as Historic Properties Treatment Plan), allow for an extension of the performance period, and coordination meetings with Caltrans and other relevant agencies.

### **DETERMINATION OF SAFETY IMPACT**

The modifications to the Kleinfelder task order contract will not have a direct impact on the safety of our customers and employees. Ultimately, they will result in implementation of the project being studied and will create safer connections for Metro transit patrons, including transit connections to the surrounding neighborhood destinations and job centers.

### **FINANCIAL IMPACT**

There is sufficient funding in the FY19 budget in Cost Center Number 4530, Strategic Initiatives, under Project Number 405557, Union Station Master Plan, to accommodate Modification No. 9 and the \$250,000 CMA for Kleinfelder.

Since this is a multi-year contract/project, the cost center manager and Chief Planning Officer will be accountable for budgeting the cost in future years.

#### Impact to Budget

Source of funds is Local - General Fund ROW lease revenues. These funds are eligible for bus and rail operating and capital expenses. The modifications will not impact ongoing bus and rail operating and capital costs, the Proposition A and C and TDA administration budget or the Measure R administration budget.

---

## **ALTERNATIVES CONSIDERED**

The Board may consider not approving Contract Modification No. 9 and increase in the CMA. This is not recommended. Metro secured two Active Transportation Program grants and is required to undertake NEPA analysis, which is underway. Caltrans as the Lead Agency has requested additional studies and has called for a delay in the environmental clearance timeline that will necessitate modifying the contract with Kleinfelder to carry out the work. Without the Contract Modification No. 9 and increase in the CMA, staff will be unable to modify the contract with Kleinfelder and will be unable to deliver the additional cultural resources technical studies required by Caltrans to complete the project, complete the NEPA process, and finalize design or construct the project.

## **NEXT STEPS**

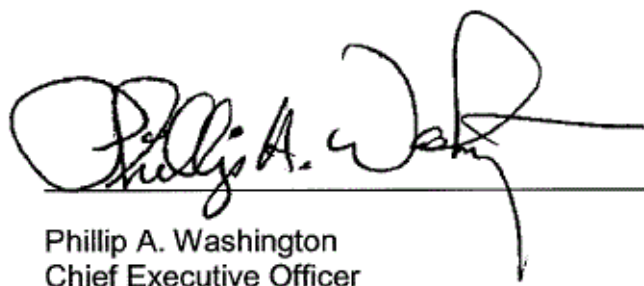
Upon Board approval, staff will execute Modification No. 9 to Task Order No. PS2999200FFO2TO1 with Kleinfelder and coordinate with Caltrans to advance the necessary environmental documentation and coordination needed to complete the NEPA environmental clearance.

## **ATTACHMENTS**

Attachment A - Procurement Summary  
Attachment B - Task Order Log  
Attachment C - DEOD Summary  
Attachment D - Project Map  
Attachment E - Project Funding

Prepared by: Elizabeth Carvajal, Senior Director, Transit Oriented Communities, (213) 922-3084  
Jenna Hornstock, EO, Transit Oriented Communities, (213) 922-7437

Reviewed by: Debra Avila, Chief, Vendor/Contract Management Officer, (213) 418-3051  
Therese W. McMillan, Chief Planning Officer, (213) 922-7077



---

Phillip A. Washington  
Chief Executive Officer

## PROCUREMENT SUMMARY

LOS ANGELES UNION STATION FORECOURT AND ESPLANADE  
IMPROVEMENTS / PS4010-3041-FF-XX

1.	<b>Contract Number:</b> PS4010-3041-FF-XX (Task Order No. PS2999200FF02TO1)		
2.	<b>Contractor:</b> Kleinfelder, Inc.		
3.	<b>Mod. Work Description:</b> Complete environmental clearance under the National Environmental Policy Act (NEPA) for the Los Angeles Union Station Forecourt and Esplanade Improvements.		
4.	<b>Work Description:</b> Union Station Master Plan		
5.	<b>The following data is current as of:</b> 05/17/18		
6.	<b>Contract/TO Completion Status:</b>		<b>Financial Status:</b>
	<b>Award Date:</b>	06/24/15	<b>Awarded Task Order Amount:</b> \$749,392
	<b>Notice to Proceed (NTP):</b>	06/24/15	
	<b>Original Completion Date:</b>	08/30/17	<b>Value of Mods. Issued to Date (including this action):</b> \$388,839
	<b>Current Est. Complete Date:</b>	02/28/19	<b>Total Amount (including this action):</b> \$1,138,231
7.	<b>Contract Administrator:</b> Lily Lopez		<b>Telephone Number:</b> (213) 922-4639
8.	<b>Project Manager:</b> Elizabeth Carvajal		<b>Telephone Number:</b> (213) 922-3084

**A. Contract Action Summary**

This Board Action is to approve Modification No. 9 to Task Order No. PS2999200FF02TO1 under Contract No. PS4010-3041-FF-XX to provide additional environmental services under the Union Station Master Plan Programmatic Environmental Impact Report (USMP PEIR) Task Order Contract. This Modification will require the Contractor to provide additional technical studies related to cultural resources in order to complete environmental clearance under the NEPA.

All Task Order Modifications are handled in accordance with Metro's Acquisition Policy. The contract/task order type is firm fixed price. All other terms and conditions remain in effect.

On June 24, 2015, Task Order No. PS2999200FF02TO1 for the firm fixed price of \$749,392 was issued to Kleinfelder, Inc., a contractor on the Countywide Planning Bench, Discipline 2 (Environmental Planning).

Refer to Attachment B – Task Order Log for modifications issued to date.

**B. Cost Analysis**

The recommended price has been determined to be fair and reasonable based upon an independent cost estimate (ICE), cost analysis, and technical analysis.

<b>Proposal Amount</b>	<b>Metro ICE</b>	<b>Negotiated Amount</b>
\$58,294	\$60,003	\$58,294

**ATTACHMENT B**

**TASK ORDER LOG - PS2999200FFO2TO1  
COUNTYWIDE PLANNING BENCH/CONTRACT NO. PS4010-3041  
TASK ORDER LOG VALUE ISSUED TO DATE**

<b>Mod. No.</b>	<b>Description</b>	<b>Status (approved or pending)</b>	<b>Date</b>	<b>Amount</b>
1	Provide analysis and environmentally cleared Stage 1 at the project level and Stage 2 and 3 and the program level.	Approved	10/14/15	\$89,970
2	No Cost Time Extension	Approved	11/21/16	\$0
3	Prepare the analysis and noticing required under the National Environmental Policy Act (NEPA) for the Los Angeles Union Station Forecourt and Esplanade Improvements.	Approved	01/25/17	\$82,533
4	No Cost Time Extension	Approved	07/26/17	\$0
5	Additional services to finalize Environmental Review.	Approved	11/03/17	\$54,144
6	Perform additional work to complete the certification of the Final Environmental Impact Report (EIR) and NEPA Clearance for the project.	Approved	01/31/18	\$35,090
7	Additional cultural resource services	Approved	03/28/18	\$49,862
8	Prepare an Addendum to the LAUS Forecourt and Esplanade Improvements Final.	Approved	05/07/18	\$18,946
9	Provide additional technical studies related to cultural resources in order to complete environmental clearance under the NEPA.	Pending	Pending	\$58,294
	<b>Task Order Modification Total:</b>			<b>\$388,839</b>
	<b>Original Task Order Amount:</b>	<b>06/24/15</b>		<b>\$749,392</b>
	<b>Total:</b>			<b>\$1,138,231</b>

**TASK ORDER LOG**

**COUNTYWIDE PLANNING BENCH/CONTRACT NO. PS4010-3041  
TASK ORDER LOG VALUE ISSUED TO DATE**

<b>Discipline No./ Description</b>	<b>Contract No.</b>	<b>Contractor</b>	<b>Value of Task Orders Issued to Date</b>
1/Transportation Planning	PS4010-3041-O-XX	David Evans & Associates, Inc.	\$459,587.68
	PS4010-3041-BB-XX	IBI Group	\$792,951.46
	PS4010-3041-F-XX	Cambridge Systematics, Inc.	\$4,166,426.74
	PS4010-3041-U-XX	Fehr & Peers	\$1,978,617.34
	PS4010-3041-YY-XX	STV Corporation	\$490,954.00
	PS4010-3041-I-XX	CH2M Hill, Inc.	\$286,865.00
	PS4010-3041-DD-XX	Iteris, Inc.	\$1,911,605.06
	PS4010-3041-Y1-XX	HDR Engineering, Inc.	\$1,641,541.24
	PS4010-3041-Y1-XX	KOA Corporation	\$298,142.85
	PS4010-3041-RR-XX	Parsons Transportation Group	\$1,832,178.00
	PS4010-3041-EE-XX	Kimley Horn & Associates, Inc.	\$291,005.46
	PS4010-3041-A-XX	AECOM Technical Services, Inc.	\$2,655,179.96
	PS4010-3041-QQ-XX	Parsons Brinckerhoff, Inc.	\$1,832,178.00
		Subtotal	\$18,637,232.79
2/Environmental Planning	PS4010-3041-FF-XX	Kleinfelder, Inc.  <b><i>This Pending Action</i></b>	\$1,079,936.97  <b>+ \$58,293.80</b>
		Subtotal	\$1,138,230.77

6/Architecture	PS4010-3041-RR-XX	Parsons Transportation Group	\$115,817.00
	PS4010-3041-W-XX	Gensler	\$269,041.34
		Subtotal	\$384,858.34
7/Urban Design	PS4010-3041-W-XX	Gensler	\$406,905.18
		Subtotal	\$406,905.18
9/Environmental Graphic Design	PS4010-3041-WW-09	Selbert Perkins Design	\$248,361.00
		Subtotal	\$248,361.00
11/Financial Analysis	PS4010-3041-I-XX	CH2M Hill, Inc.	\$587,011.00
	PS4010-3041-A-XX	AECOM Technical Services, Inc.	\$95,976.53
		Subtotal	\$682,987.53
12/Land Use and Regulatory Planning	PS4010-3041-BB-XX	IBI Group	\$1,286,323.00
		Subtotal	\$1,286,323.00
13/Sustainability/Active Transportation	PS4010-3041-U-XX	Fehr & Peers	\$1,950,067.67
	PS4010-3041-XX-13	Stantec Consulting Services, Inc.	\$618,390.76
		Subtotal	\$2,568,458.43
14/Database Technical Services	PS4010-3041-PP-14	Novanis	\$1,310,664.93
	PS4010-3041-KKK-14	Accenture	\$101,000
		Subtotal	\$1,411,664.93
17/Community Outreach/ Public Education & Research Services	PS4010-3041-EEE-17	The Robert Group	\$771,839.00
	PS4010-3041-D	Arellano Associates	\$564,877.00
		Subtotal	\$1,336,716.00
<b>Total Task Orders Awarded to Date</b>			<b>\$28,043,444.17</b>
<b>Board Authorized Not-To-Exceed (NTE) Cumulative Total Value</b>			<b>\$30,000,000.00</b>
<b>Remaining Board Authorized NTE Cumulative Total Value</b>			<b>\$1,956,555.83</b>



## DEOD SUMMARY

**UNION STATION MASTER PLAN FORECOURT AND ESPLANADE  
IMPROVEMENTS/PS2999200FFO2TO1 / PS4010-3041-FF-XX**

**A. Small Business Participation**

Kleinfelder Inc. made an 18.05% Small Business Enterprise (SBE) commitment. The project is 47% complete. Kleinfelder Inc. is currently exceeding their commitment with an SBE participation of 19.43% utilizing Environmental Consultant Sapphos Environmental. Kleinfelder has indicated that MARRS Services and Entech Consulting will be utilized as task orders are issued for their scopes of work after completion of work by traffic consultants.

<b>Small Business Commitment</b>	<b>18.05% SBE</b>	<b>Small Business Participation</b>	<b>19.43% SBE</b>
----------------------------------	-------------------	-------------------------------------	-------------------

	<b>SBE Subcontractors</b>	<b>% Committed</b>	<b>Current Participation<sup>1</sup></b>
1.	Entech Northwest, Inc.	3.47%	0.00%
2.	MARRS Services, Inc.	1.35%	0.00%
3.	Sapphos Environmental, Inc.	13.23%	19.43%
	<b>Total</b>	<b>18.05%</b>	<b>19.43%</b>

<sup>1</sup>Current Participation = Total Actual amount Paid-to-Date to DBE firms ÷ Total Actual Amount Paid-to-date to Prime.

**B. Prevailing Wage Applicability**

Prevailing Wage requirements are applicable to this project. DEOD will continue to monitor contractors' compliance with the State of California Department of Industrial Relations (DIR), California Labor Code, and, if federally funded, the U S Department of Labor (DOL) Davis Bacon and Related Acts (DBRA). Trades that may be covered include: surveying, potholing, field, soils and materials testing, building construction inspection, construction management and other support trades.

**C. Living Wage Service Contract Worker Retention Policy Applicability**

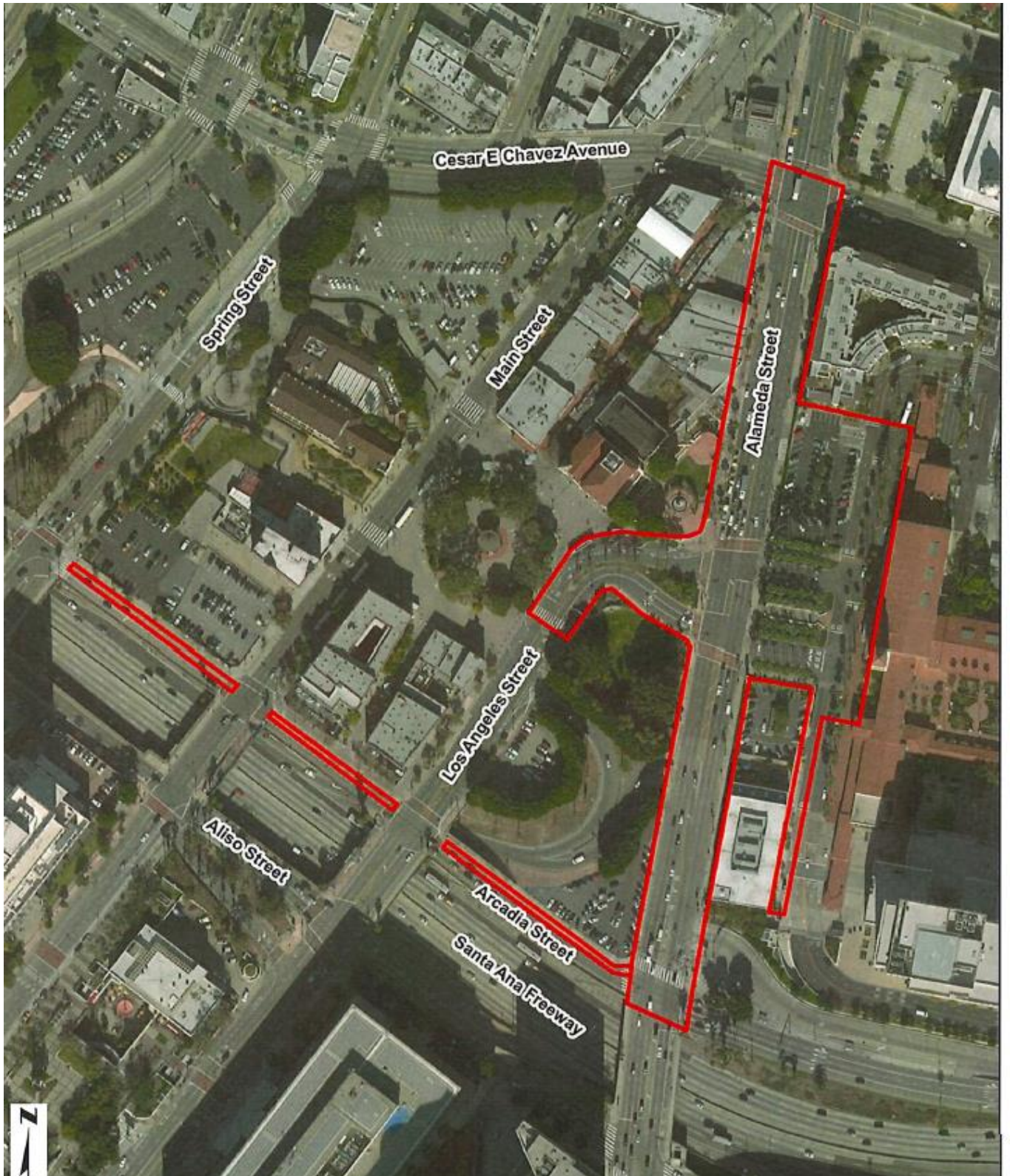
The Living Wage and Service Contract Worker Retention Policy is not applicable to this Modification.


**D. Project Labor Agreement/Construction Careers Policy**

Project Labor Agreement/Construction Careers Policy is not applicable to this Contract.

# Attachment D: Project Map

Los Angeles Union Station Forecourt and Esplanade Improvements



 LAUS Forecourt and Esplanade Improvements

## Attachment E: Funding Table

### Los Angeles Union Station Forecourt and Esplanade Improvements

<b>Project Cost \$</b>	\$20,162,925.00 (does not include Forecourt construction)
<b>Cost Type</b>	Design and construction

#### Revenue

Funding Source	Type	Amount	Status
Federal	Active Transportation Program (FHWA) Cycle 2 and Cycle 3	\$17,666,464.00	Committed
State			
Local	Proposition A (LA County Open Space District Grant)	\$1,000,000.00	Committed
	Metro Local	\$1,496,461.00	Committed
<b>Total Revenue</b>		<b>\$20,162,925.00</b>	