



Board Report

File #: 2019-0093, **File Type:** Informational Report

Agenda Number: 25.

**OPERATIONS, SAFETY AND CUSTOMER EXPERIENCE COMMITTEE
MARCH 21, 2019**

SUBJECT: MONTHLY UPDATE ON TRANSIT SAFETY AND SECURITY PERFORMANCE

ACTION: RECEIVE AND FILE

RECOMMENDATION

RECEIVE AND FILE Transit Safety and Security Report.

ISSUE

This report reflects January 2019 performance data as reported under the transit policing deployment strategy which is a combination of in-house fare compliance officers, private security for fixed assets and a multi-agency law enforcement deployment strategy by the Los Angeles Police Department (LAPD), Los Angeles County Sheriff's Department (LASD), and Long Beach Police Department (LBPD). The information in this report summarizes Crimes Against Persons, Crimes Against Property, and Crimes Against Society data under Uniform Crime Reporting (UCR) Program, average emergency response times, assaults on bus operators, and Metro's fare compliance and homeless outreach efforts. The Six Key Performance Indicators (KPI) are Uniform Crime Reporting guidelines, Average Emergency Response Times, Percentage of Time Spent on the System, Ratio of Staffing Levels vs Vacant Assignments, Ratio of Proactive vs Dispatched Activity, and Number of Grade Crossing Operations.

BACKGROUND

UCR is a National Incident-Based Reporting System from the US Department of Justice. It captures crime offenses in one of three categories: Crimes Against Persons, Crimes Against Property, and Crimes Against Society.

DISCUSSION

Crime stats are as follows:

Crimes Against Persons

For the month of January 2019, crimes against persons decreased by 9 crimes system-wide compared to the same period last year.

Crimes Against Property

For the month of January 2019, crimes against property increased by 15 crimes system-wide compared to the same period last year.

Crimes Against Society

For the month of January 2019, crimes against society increased by 12 crimes system-wide compared to the same period last year.

Bus Operator Assaults:

There were 8 bus operator assaults reported in January, which is 1 fewer operator assaults compared to the same period last year.

Average Emergency Response Times:

Emergency response times averaged 4.50 minutes for the month of January.

Physical Security Improvements:

The Systems Security and Law Enforcement division continues to provide a secure and safe environment for our patrons and employees. Our Metro Facility physical security assessment was completed, and the report was presented to key Metro leaders in Bus and Rail Operations, Information Technology and Facilities. The physical security assessment of Union Station started in August, and will conclude in February 2019.

We are working closely with the Los Angeles Police Department to develop a concept of the operations for the deployment of the Thruvision detection at range technology. We have had several meetings with the LAPD, and we continue to develop the procedures that will protect the public and Metro.

The Red Line ancillary area surge continues, and we are making progress with securing our underground rail stations. We are assisting the New Blue Line construction (Phase 1) and the upcoming Phase 2 later in the year.

Metro's Homeless Efforts:

In spring 2016, Metro created the Metro Homeless Task Force to address the displaced persons that have turned to Metro system and property for alternative shelter. Out of the Task Force, Metro created the Metro Transit Homeless Action Plan which was presented to the Metro Board of Directors in February 2017. The Action Plan's goals are to enhance the customer experience, maintain a safe and secure system, and provide coordinated outreach. Components of the plan include Metro's coordination with County and City Measure H and Measure HHH. The plan also called for the hiring of two C3 teams (County, City, Community) through the County Department of Health Services as indicated by Metro's Board of Directors. The C3 teams are to provide coordinated and responsive outreach to the homeless and to ultimately get them in housing resources.

Metro's C3 Homeless Outreach Teams:

Metro's C3 Homeless Outreach teams' twelve-month pilot program began on May 22, 2017 with initial homeless outreach on the Red Line. Since the launch of Metro's C3 Homeless Outreach teams they have provided substantial homeless outreach-with 4,347 total unduplicated homeless contacts, 1,031 of whom have been linked to permanent housing solutions. In FY19 Metro expanded

the C3 teams from two to eight teams to cover rail, bus and Union Station. Currently, there are 8 PATH teams deployed on the rail and at Union Station, hiring for bus deployment remains a challenge.

C3 Homeless Outreach January 1, 2019 through February 8, 2019:

Performance Measure	January Number Served	Project Year to date Number Served
Contacts with unduplicated individuals	295	4,347
Unduplicated individuals engaged	118	2,522
Unduplicated individuals provided services (obtaining vital documents, follow-up activities, transportation, CES packet, clinical assessment, etc.) or successful referral (supportive services, benefits linkage etc.)	158	1721
Unduplicated individuals engaged who are successfully linked to an interim housing resource	67	655
Unduplicated individuals engaged who are linked to a permanent housing resource	9	298
Unduplicated individuals engaged who are permanently housed	8	78

C3 Coordination with Law Enforcement

With Metro System Security and Law Enforcement personnel as the lead, Metro’s C3 teams coordinate with LAPD’s Homeless Outreach and Protective Engagement (HOPE) Teams, LASD’s Mental Evaluation Teams (MET), Long Beach PD, and Metro’s Transit Security Officers, in an effort to engage the homeless and provide placement into services. These law enforcement entities provide gap service on the lines for homeless outreach when the C3 Teams are off duty or working another portion of the system.

LAPD Homeless Referrals to Metro’s C3 Teams for the Month of January 2019.

LAPD referred 17 homeless individuals to Metro’s C3 Outreach teams resulting in:

- Of the seventeen referrals, four declined services.
- Two were placed in interim housing, then reunified with family members for permanent housing.
- Two were assisted with obtaining documents, and are working toward housing.
- One was arrested.
- Two completed a CES and were transported to shelter.
- Two completed CES (one of the two received an ID voucher).

- Three completed a CES, filled out a HFH form and placed in a motel.
- One was transported to a winter shelter.

Sheriff Mental Evaluation Team (MET) Contacts January 6, 2019 through February 2, 2019

These monthly statistics only include contacts of the Transit MET Units. They do not include contacts made by other Transit Services Bureau personnel. In addition to the below data:

- Transported 32 clients to other homeless outreach connection services.
- One team attended a 40mm less lethal training at TIU on 01/25/2019.
- 2 teams attended a 40mm less lethal training at TIU on 01/29/2019.
- 1 team attended a Metro Homeless Workshop on 01/29/2019.
- 2 teams assessed and cleaned up a homeless encampment on the gold Line, South from Del Mar PAX on 01/30/2019.

January 2019 Law Enforcement Homeless Outreach

ACTION	LAPD HOPE	LASD MET	LBPB
Contacts	231	661	15
Referrals	231	406	1
5150 Holds	4	15	0
Mental Illness	21	207	6
Substance Abuse	64	117	2
Veterans	5	3	0
Shelter	14	24	2
Motel Housing Plan	0	3	0
VA Housing	1	0	0
Return to Family	1	4	0
Transitional Long Term Housing	0	0	0
Detox	0	1	0
Rehab	7	0	0

FY19 Officer Expansion:

Metro’s contracted law enforcement specialized in homeless engagement will increase during FY19. LAPD HOPE officers will be increased from 10 part time officers to 10 full time officers, LASD MET deputies will be increased from 6 to 10, and Long Beach PD will hire 2 quality of life officers.

Metro's Encampment Protocol:

Metro has developed an encampment protocol to be applied to all of Metro properties. Metro is working with LA City and Long Beach City localities to address Divisions 1, 2 and 11. Orange Line clean-up will serve as the next priority of clean up locations to be address.

Measure H Generalist:

Metro's Homeless Action Plan integrates itself into the work provided under Measures H and HHH. Part of the E6 Strategies of Measure H includes 40 additional outreach workers otherwise known as "generalists" to conduct outreach on government properties including Metro, and countywide parks, libraries, beaches and harbors. These generalists will not go past the fare gates and their data, per the county will not be extrapolated for Metro. However, these generalists will work with the C3 teams to provide outreach services.

Mental Health Outreach Workers:

Metro pilot program with the LA county Department of Mental Health will be launched pending County mental health outreach workers becoming available.

Connect Days

Metro partnered in a connect day in Chairman Sheila Kuehl's District as well weekly connect days located in MacArthur Park off the Westlake/ MacArthur Park station.

"Community Policing Unplugged" Meeting

In late January 2019 Metro hosted a Community Policing Series focused on enhancing coordination when addressing homelessness. Attendees included: Metro System Security and Law Enforcement, Metro Emergency Management, Metro Union Station, LAPD, LASD, Long Beach PD, LA County CEO's office, LA City, Metrolink, LA County Department of Health Services, PATH, and faith based leaders.

ATTACHMENTS

Attachment A - System-Wide Law Enforcement Overview January 2019

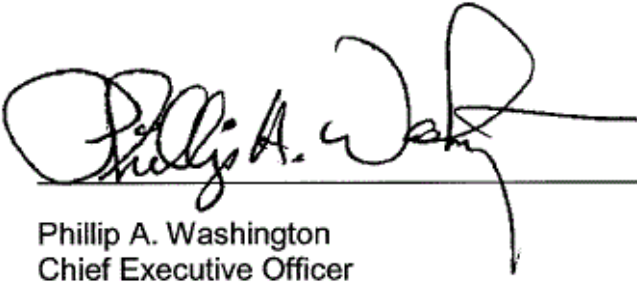
Attachment B - Detail by Rail Line January 2019

Attachment C - Key Performance Indicators January 2019

Attachment D - Transit Police Summary January 2019

Prepared by: Alex Z. Wiggins, Chief, System Security and Law Enforcement,
(213) 922-4433

Reviewed by: Phillip A. Washington, Chief Executive Officer, (213) 922-7555



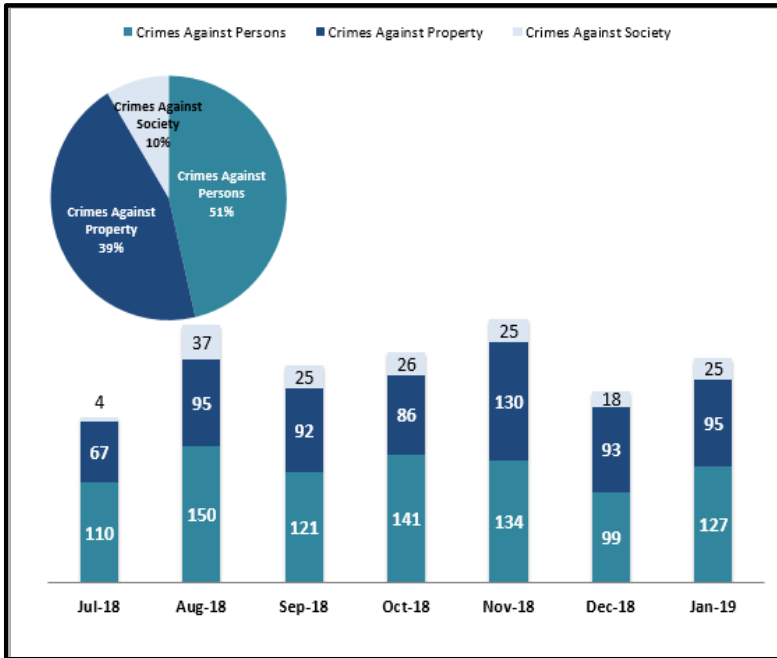
Phillip A. Washington
Chief Executive Officer

SYSTEM-WIDE LAW ENFORCEMENT OVERVIEW

JANUARY 2019

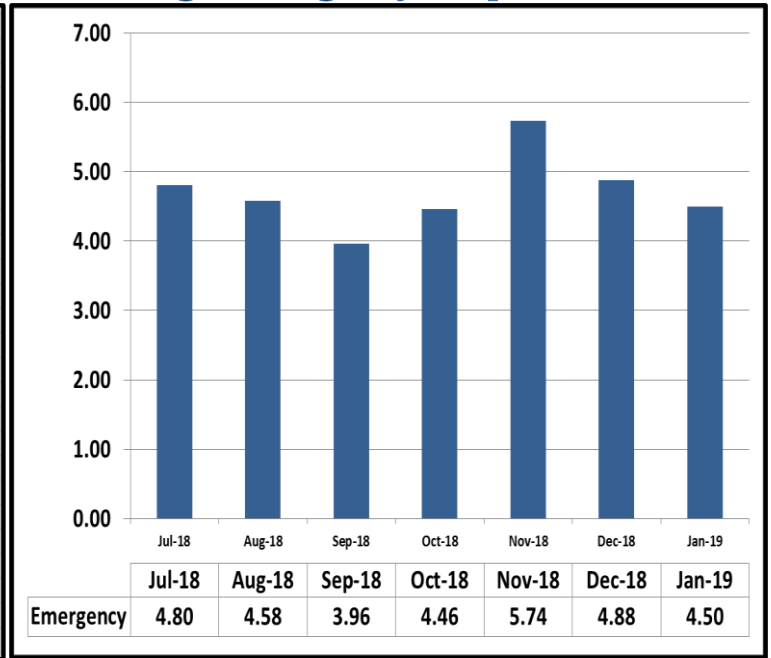
Attachment A

Crimes Against Persons, Property, and Society



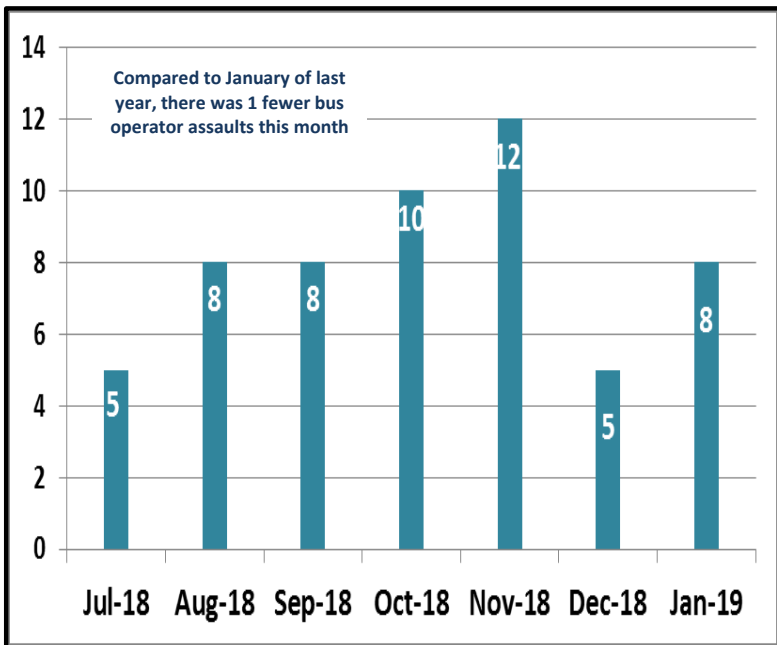
When compared to the same period last year, Crimes Against Persons decreased by 9 crimes, Crimes Against Property increased by 15 crimes, and Crimes Against Society increased by 12 crimes.

Average Emergency Response Times

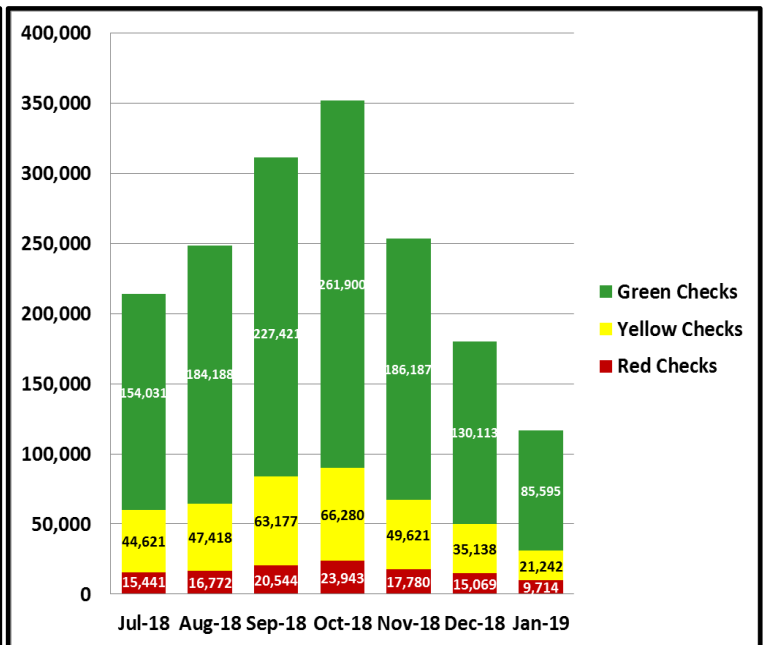


Average emergency response time was 4.50 mins.

Bus Operator Assaults



Fare Compliance



Green Checks- Occurs when a patron has valid fare

Yellow Checks- Occurs when a patron has valid fare, but did not tap at transfer station

Red Checks- Occurs when a patron has invalid fare

MONTHLY UPDATE ON TRANSIT POLICING PERFORMANCE - JANUARY 2019

REPORTED CRIME				
PART 1 CRIMES	LAPD	LASD	LBPD	FYTD
Homicide	0	0	0	0
Rape	0	0	0	0
Robbery	1	1	0	36
Aggravated Assault	1	2	3	32
Aggravated Assault on Operator	0	0	0	0
Burglary	0	1	0	3
Larceny	4	3	1	66
Bike Theft	0	0	0	4
Motor Vehicle Theft	0	0	0	7
Arson	0	0	0	0
Other	0	0	0	5
SUB-TOTAL	6	7	4	153
Selected Part 2 Crimes				
Battery	3	3	0	50
Battery Rail Operator	0	0	0	3
Sex Offenses	0	0	0	3
Weapons	0	2	0	13
Narcotics	0	7	1	63
Trespassing	0	3	0	9
Vandalism	0	1	0	14
Other	0	0	0	2
SUB-TOTAL	3	16	1	157
TOTAL	9	23	5	310

PART 1 CRIMES PER STATION		
Station	JANUARY	FYTD
7th/Metro	2	5
Pico	2	5
Grand	0	3
San Pedro	1	4
Washington	0	4
Vernon	1	4
Slauson	1	10
Florence	2	9
Firestone	2	13
103rd St	0	6
Willowbrook	0	16
Compton	2	21
Artesia	0	9
Del Amo	0	8
Wardlow	1	12
Willow	0	8
PCH	1	1
Anaheim	1	4
5th St	0	2
1st St	0	1
Downtown Long Beach	1	3
Pacific	0	4
Rail Yard	0	1
Total	17	153

	LAPD	LASD	LBPD	TOTAL
CRIMES AGAINST PERSONS	5	6	3	14
CRIMES AGAINST PROPERTY	4	5	1	10
CRIMES AGAINST SOCIETY	0	12	1	13
JANUARY 2019 TOTAL	9	23	5	37

ARRESTS				
AGENCY	LAPD	LASD	LBPD	FYTD
Felony	0	7	11	159
Misdemeanor	0	63	41	784
TOTAL	0	70	52	943

CITATIONS				
AGENCY	LAPD	LASD	LBPD	FYTD
Other Citations	1	89	24	838
Vehicle Code Citations	0	17	100	811
TOTAL	1	106	124	1,649

CALLS FOR SERVICE				
AGENCY	LAPD	LASD	LBPD	FYTD
Routine	N/A*	46	5	435
Priority	N/A*	75	49	1,002
Emergency	N/A*	13	24	380
TOTAL	0	134	78	1,817

*Currently unable to report stats by Rail Line

DISPATCHED VS. PROACTIVE			
AGENCY	LAPD	LASD	LBPD
Dispatched	18%	3%	6%
Proactive	82%	97%	94%
TOTAL	100%	100%	100%

PERCENTAGE OF TIME SPENT ON THE RAIL SYSTEM	
LINE	JANUARY
Blue Line-LAPD	90%
Blue Line-LASD	79%
Blue Line-LBPD	70%

GRADE CROSSING OPERATIONS				
LOCATION	LAPD	LASD	LBPD	FYTD
Washington St	25	0	0	351
Flower St	6	0	0	105
103rd St	3	0	0	30
Wardlow Rd	0	0	4	26
Pacific Ave.	0	0	0	1
Willowbrook	0	22	0	289
Slauson	0	2	0	25
Firestone	0	5	0	30
Florence	0	3	0	67
Compton	0	22	0	176
Artesia	0	9	0	130
Del Amo	0	8	0	105
Long Beach Blvd	0	0	0	0
TOTAL	34	71	4	1,335

LEGEND
Los Angeles Police Department
Los Angeles County Sheriff's Department
Long Beach Police Department

Blue Line Highlights
 The Blue Line had 6 fewer Part 1 crimes than the same period last year (23), which resulted in a 26.1% decrease

GREEN LINE

ATTACHMENT B

MONTHLY UPDATE ON TRANSIT POLICING PERFORMANCE - JANUARY 2019

REPORTED CRIME			
PART 1 CRIMES	LAPD	LASD	FYTD
Homicide	0	0	0
Rape	0	0	0
Robbery	0	4	22
Aggravated Assault	1	0	7
Aggravated Assault on Operator	0	0	0
Burglary	0	0	0
Larceny	1	4	26
Bike Theft	0	0	0
Motor Vehicle Theft	1	2	7
Arson	0	0	0
SUB-TOTAL	3	10	62
Selected Part 2 Crimes			
Battery	0	3	18
Battery Rail Operator	0	0	0
Sex Offenses	0	0	7
Weapons	0	1	8
Narcotics	0	1	18
Trespassing	0	1	1
Vandalism	0	0	6
SUB-TOTAL	0	6	58
TOTAL	3	16	120

PART 1 CRIMES PER STATION		
Station	JANUARY	FYTD
Redondo Beach	0	2
Douglas	0	1
El Segundo	0	0
Mariposa	1	1
Aviation	0	1
Hawthorne	0	2
Crenshaw	3	6
Vermont	1	9
Harbor	1	3
Avalon	2	8
Willowbrook	2	7
Long Beach	2	12
Lakewood	1	7
Norwalk	0	3
Total	13	62

	LAPD	LASD	TOTAL
CRIMES AGAINST PERSONS	1	7	8
CRIMES AGAINST PROPERTY	2	6	8
CRIMES AGAINST SOCIETY	0	3	3
JANUARY 2019 TOTAL	3	16	19

ARRESTS			
AGENCY	LAPD	LASD	FYTD
Felony	0	8	53
Misdemeanor	1	33	203
TOTAL	1	41	256

CITATIONS			
AGENCY	LAPD	LASD	FYTD
Other Citations	2	51	283
Vehicle Code Citations	0	11	89
TOTAL	2	62	372

CALLS FOR SERVICE			
AGENCY	LAPD	LASD	FYTD
Routine	N/A*	134	986
Priority	N/A*	77	460
Emergency	N/A*	7	66
TOTAL	0	218	1512

*Currently unable to report stats by Rail Line

DISPATCHED VS. PROACTIVE		
AGENCY	LAPD	LASD
Dispatched	16%	7%
Proactive	84%	93%
TOTAL	100%	100%

PERCENTAGE OF TIME SPENT ON THE RAIL SYSTEM	
LINE	JANUARY
Green Line-LAPD	89%
Green Line-LASD	80%

LEGEND	
Los Angeles Police Department	
Los Angeles County Sheriff's Department	

Green Line Highlights

The Green Line had 1 more Part 1 crimes than the same period last year (12), which resulted in a 8.3% increase

EXPO LINE

ATTACHMENT B

MONTHLY UPDATE ON TRANSIT POLICING PERFORMANCE - JANUARY 2019

REPORTED CRIME			
PART 1 CRIMES	LAPD	LASD	FYTD
Homicide	0	0	0
Rape	0	0	5
Robbery	8	0	29
Aggravated Assault	1	0	16
Aggravated Assault on Operator	0	0	0
Burglary	0	0	2
Larceny	13	0	99
Bike Thefts	0	1	24
Motor Vehicle Theft	0	0	0
Arson	0	0	0
SUB-TOTAL	22	1	175
Selected Part 2 Crimes			
Battery	7	0	48
Battery Rail Operator	0	0	0
Sex Offenses	3	0	12
Weapons	0	1	2
Narcotics	0	0	1
Trespassing	0	0	1
Vandalism	1	0	11
SUB-TOTAL	11	1	75
TOTAL	33	2	250

PART 1 CRIMES PER STATION		
Station	JANUARY	FYTD
7th/Metro	0	5
Pico	1	5
23rd St	1	3
Jefferson/USC	1	10
Expo/USC	1	13
Expo/Vermont	2	16
Expo/Western	3	26
Expo/Crenshaw	1	14
Farmdale	3	8
La Brea	1	10
La Cienega	4	14
Culver City	0	7
Palms	1	5
Expo/Westwood	1	10
Expo/Sepulveda	2	6
Expo/Bundy	0	5
26th St /Bergamot	0	4
17th St/SMC	0	5
D/T Santa Monica	1	9
Expo Rail Yard	0	0
Total	23	175

	LAPD	LASD	TOTAL
CRIMES AGAINST PERSONS	19	0	19
CRIMES AGAINST PROPERTY	14	1	15
CRIMES AGAINST SOCIETY	0	1	1
JANUARY 2019 TOTAL	33	2	35

ARRESTS			
AGENCY	LAPD	LASD	FYTD
Felony	3	0	16
Misdemeanor	6	0	35
TOTAL	9	0	51

CITATIONS			
AGENCY	LAPD	LASD	FYTD
Other Citations	4	1	147
Vehicle Code Citations	11	0	42
TOTAL	15	1	189

CALLS FOR SERVICE			
AGENCY	LAPD	LASD	FYTD
Routine	N/A*	50	332
Priority	N/A*	28	179
Emergency	N/A*	2	18
TOTAL	0	80	529

*Currently unable to report stats by Rail Line

DISPATCHED VS. PROACTIVE		
AGENCY	LAPD	LASD
Dispatched	22%	8%
Proactive	78%	92%
TOTAL	100%	100%

PERCENTAGE OF TIME SPENT ON THE RAIL SYSTEM	
LINE	JANUARY
Expo Line-LAPD	88%
Expo Line-LASD	84%

GRADE CROSSING OPERATIONS			
LOCATION	LAPD	LASD	FYTD
Exposition Blvd	76	0	1,383
Santa Monica	0	20	179
Culver City	0	0	31
TOTAL	76	20	1,593

LEGEND	
Los Angeles Police Department	
Los Angeles County Sheriff's Department	

Expo Line Highlights

The Expo Line had 10 more Part 1 crimes than the same period last year (13), which resulted in a 76.9% increase

MONTHLY UPDATE ON TRANSIT POLICING PERFORMANCE - JANUARY 2019

REPORTED CRIME		
PART 1 CRIMES	LAPD	FYTD
Homicide	0	0
Rape	1	2
Robbery	6	37
Aggravated Assault	6	45
Aggravated Assault on Operator	0	1
Burglary	0	0
Larceny	17	115
Bike Theft	4	7
Motor Vehicle Theft	0	0
Arson	0	0
SUB-TOTAL	34	207
Selected Part 2 Crimes		
Battery	16	107
Battery Rail Operator	0	1
Sex Offenses	3	14
Weapons	0	0
Narcotics	0	0
Trespassing	3	10
Vandalism	3	8
SUB-TOTAL	25	140
TOTAL	59	347

PART 1 CRIMES PER STATION		
Station	JANUARY	FYTD
Union Station	3	23
Civic Center	0	5
Pershing Square	3	20
7th/Metro	2	22
Westlake	3	30
Wilshire/Vermont	5	19
Wilshire/Normandie	0	1
Vermont/Beverly	2	7
Wilshire/Western	0	2
Vermont/Santa Monica	3	11
Vermont/Sunset	1	3
Hollywood/Western	1	9
Hollywood/Vine	6	24
Hollywood/Highland	3	10
Universal	0	5
North Hollywood	2	16
Red Line Rail Yard	0	0
Total	34	207

	LAPD	TOTAL
CRIMES AGAINST PERSONS	32	32
CRIMES AGAINST PROPERTY	24	24
CRIMES AGAINST SOCIETY	3	3
JANUARY 2019 TOTAL	59	59

ARRESTS		
AGENCY	LAPD	FYTD
Felony	5	24
Misdemeanor	10	41
TOTAL	15	65

CITATIONS		
AGENCY	LAPD	FYTD
Other Citations	2	189
Vehicle Code Citations	1	45
TOTAL	3	234

CALLS FOR SERVICE	
AGENCY	LAPD
Routine	N/A*
Priority	N/A*
Emergency	N/A*
TOTAL	

*Currently unable to report stats by Rail Line

DISPATCHED VS. PROACTIVE	
AGENCY	LAPD
Dispatched	43%
Proactive	57%
TOTAL	100%

PERCENTAGE OF TIME SPENT ON THE RAIL SYSTEM	
LINE	JANUARY
Red Line- LAPD	90%

LEGEND
Los Angeles Police Department

Red Line Highlights

The Red Line had 12 more Part 1 crimes than the same period last year (22), which resulted in a 54.5% increase

MONTHLY UPDATE ON TRANSIT POLICING PERFORMANCE - JANUARY 2019

REPORTED CRIME			
PART 1 CRIMES	LAPD	LASD	FYTD
Homicide	0	0	1
Rape	0	0	0
Robbery	0	0	3
Aggravated Assault	0	2	13
Aggravated Assault on Operator	0	0	0
Burglary	0	0	1
Larceny	1	3	26
Bike Theft	0	0	8
Motor Vehicle Theft	0	0	5
Arson	0	0	0
SUB-TOTAL	1	5	57
Selected Part 2 Crimes			
Battery	1	0	15
Battery Rail Operator	0	0	0
Sex Offenses	1	0	1
Weapons	0	0	0
Narcotics	0	0	1
Trespassing	1	0	1
Vandalism	0	0	8
SUB-TOTAL	3	0	26
TOTAL	4	5	83

PART 1 CRIMES PER STATION		
Station	JANUARY	FYTD
APU/Citrus College	2	6
Azusa Downtown	0	1
Irwindale	0	1
Duarte	0	5
Monrovia	0	5
Arcadia	0	1
Sierra Madre	0	4
Allen	0	0
Lake	1	2
Memorial Park	0	1
Del Mar	0	0
Fillmore	0	1
South Pasadena	0	0
Highland Park	1	1
SW Museum	0	2
Heritage Square	0	1
Lincoln Heights	0	3
Chinatown	0	0
Union Station	0	5
Little Tokyo	0	2
Pico/Aliso	0	1
Mariachi	0	3
Soto	0	2
Indiana (both LAPD & LASD)	0	4
Maravilla	0	0
East LA	0	0
Atlantic	2	6
Total	6	57

	LAPD	LASD	TOTAL
CRIMES AGAINST PERSONS	2	2	4
CRIMES AGAINST PROPERTY	1	3	4
CRIMES AGAINST SOCIETY	1	0	1
JANUARY 2019 TOTAL	4	5	9

ARRESTS			
AGENCY	LAPD	LASD	FYTD
Felony	1	2	16
Misdemeanor	3	4	31
TOTAL	4	6	47

CITATIONS			
AGENCY	LAPD	LASD	FYTD
Other Citations	21	9	103
Vehicle Code Citations	1	4	91
TOTAL	22	13	194

CALLS FOR SERVICE			
AGENCY	LAPD	LASD	FYTD
Routine	N/A*	63	460
Priority	N/A*	102	593
Emergency	N/A*	5	60
TOTAL	0	170	1113

*Currently unable to report stats by Rail Line

DISPATCHED VS. PROACTIVE		
AGENCY	LAPD	LASD
Dispatched	14%	4%
Proactive	86%	96%
TOTAL	100%	100%

PERCENTAGE OF TIME SPENT ON THE RAIL SYSTEM	
LINE	JANUARY
Gold Line-LAPD	90%
Gold Line-LASD	71%

GRADE CROSSING OPERATIONS			
LOCATION	LAPD	LASD	FYTD
Marmion Way	80	0	930
Arcadia Station	0	2	40
Irwindale	0	1	17
Monrovia	0	5	46
City of Pasadena	0	30	224
Magnolia Ave	0	0	0
Duarte Station	0	2	16
City Of Azusa	0	4	41
South Pasadena	0	10	83
City Of East LA	0	29	120
Figuroa St	0	0	193
TOTAL GOAL= 10	80	83	1710

LEGEND	
Los Angeles Police Department	
Los Angeles County Sheriff's Department	

Gold Line Highlights

The Gold Line had 1 fewer Part 1 crimes than the same period last year (7), which resulted in a 14.3% decrease

MONTHLY UPDATE ON TRANSIT POLICING PERFORMANCE - JANUARY 2019

REPORTED CRIME		
PART 1 CRIMES	LAPD	FYTD
Homicide	0	0
Rape	0	0
Robbery	1	4
Aggravated Assault	1	9
Aggravated Assault on Operator	0	1
Burglary	0	0
Larceny	0	8
Bike Theft	0	2
Motor Vehicle Theft	0	0
Arson	0	0
SUB-TOTAL	2	24
Selected Part 2 Crimes		
Battery	0	8
Battery Bus Operator	0	1
Sex Offenses	0	0
Weapons	0	0
Narcotics	0	0
Trespassing	0	0
Vandalism	1	7
SUB-TOTAL	1	16
TOTAL	3	40

PART 1 CRIMES PER STATION		
Station	JANUARY	FYTD
North Hollywood	0	3
Laurel Canyon	0	0
Valley College	0	0
Woodman	0	0
Van Nuys	0	6
Sepulveda	0	2
Woodley	0	1
Balboa	1	3
Reseda	0	2
Tampa	0	0
Pierce College	0	0
De Soto	0	1
Canoga	1	4
Warner Center	0	0
Sherman Way	0	0
Roscoe	0	0
Nordhoff	0	1
Chatsworth	0	1
Total	2	24

	LAPD	TOTAL
CRIMES AGAINST PERSONS	2	2
CRIMES AGAINST PROPERTY	1	1
CRIMES AGAINST SOCIETY	0	0
JANUARY 2019 TOTAL	3	3

ARRESTS		
AGENCY	LAPD	FYTD
Felony	1	2
Misdemeanor	1	12
TOTAL	2	14

CITATIONS		
AGENCY	LAPD	FYTD
Other Citations	0	2,215
Vehicle Code Citations	293	1,993
TOTAL	293	4,208

CALLS FOR SERVICE		
AGENCY	LAPD	FYTD
Routine	N/A*	N/A*
Priority	N/A*	N/A*
Emergency	N/A*	N/A*
TOTAL	0	0

*Currently unable to report stats by Bus Rapid Transit Line

DISPATCHED VS. PROACTIVE	
AGENCY	LAPD
Dispatched	24%
Proactive	76%
TOTAL	100%

PERCENTAGE OF TIME SPENT ON THE BUS SYSTEM	
LINE	JANUARY
Orange Line- LAPD	91%

LEGEND	
Los Angeles Police Department	

Orange Line Highlights

The Orange Line had 2 more Part 1 crimes than the same period last year (0)

MONTHLY UPDATE ON TRANSIT POLICING PERFORMANCE - JANUARY 2019

REPORTED CRIME			
PART 1 CRIMES	LAPD	LASD	FYTD
Homicide	0	0	0
Rape	0	0	0
Robbery	0	0	2
Aggravated Assault	0	0	1
Aggravated Assault on Operator	0	0	0
Burglary	0	0	0
Larceny	1	0	3
Bike Theft	0	0	2
Motor Vehicle Theft	0	0	0
Arson	0	0	0
SUB-TOTAL	1	0	8
Selected Part 2 Crimes			
Battery	0	0	5
Battery Bus Operator	0	0	0
Sex Offenses	0	0	0
Weapons	0	0	0
Narcotics	0	0	0
Trespassing	0	0	0
Vandalism	0	0	2
SUB-TOTAL	0	0	7
TOTAL	1	0	15

PART 1 CRIMES PER STATION		
Station	JANUARY	FYTD
El Monte	0	0
Cal State LA	0	0
LAC/USC	0	0
Alameda	0	0
Downtown	0	1
37th St/USC	0	1
Slauson	0	1
Manchester	0	1
Harbor Fwy	1	1
Rosecrans	0	1
Harbor/Gateway	0	0
Carson	0	0
PCH	0	1
San Pedro	0	1
Total	1	8

	LAPD	LASD	TOTAL
CRIMES AGAINST PERSONS	0	0	0
CRIMES AGAINST PROPERTY	1	0	1
CRIMES AGAINST SOCIETY	0	0	0
JANUARY 2019 TOTAL	1	0	1

ARRESTS			
AGENCY	LAPD	LASD	FYTD
Felony	0	0	5
Misdemeanor	0	0	24
TOTAL	0	0	29

CITATIONS			
AGENCY	LAPD	LASD	FYTD
Other Citations	8	0	2,207
Vehicle Code Citations	274	0	2,365
TOTAL	282	0	4,572

CALLS FOR SERVICE			
AGENCY	LAPD	LASD	FYTD
Routine	N/A*	0	0
Priority	N/A*	1	9
Emergency	N/A*	0	1
TOTAL	0	1	10

*Currently unable to report stats by Bus Rapid Transit Line

DISPATCHED VS. PROACTIVE		
AGENCY	LAPD	LASD
Dispatched	11%	0%
Proactive	89%	100%
TOTAL	100%	100%

PERCENTAGE OF TIME SPENT ON THE BUS SYSTEM	
LINE	JANUARY
Silver Line- LAPD	90%
Silver Line- LASD	60%

LEGEND	
Los Angeles Police Department	
Los Angeles County Sheriff's Department	

Silver Line Highlights

The Silver Line had 1 fewer Part 1 crimes than the same period last year (2), which resulted in a 50% decrease

BUS PATROL

MONTHLY UPDATE ON TRANSIT POLICING PERFORMANCE - JANUARY 2019

REPORTED CRIME			
PART 1 CRIMES	LASD	LAPD	FYTD
Homicide	0	0	0
Rape	0	0	0
Robbery	2	6	54
Aggravated Assault	2	3	53
Aggravated Assault on Operator	0	0	9
Burglary	0	0	2
Larceny	0	20	111
Bike Theft	0	0	14
Motor Vehicle Theft	0	0	1
Arson	0	0	0
SUB-TOTAL	4	29	244
Selected Part 2 Crimes			
Battery	9	11	128
Battery Bus Operator	3	5	42
Sex Offenses	1	1	21
Weapons	0	0	8
Narcotics	3	0	35
Trespassing	0	0	5
Vandalism	1	0	22
SUB-TOTAL	17	17	261
TOTAL	21	46	505

	LASD	LAPD	TOTAL
CRIMES AGAINST PERSONS	17	26	43
CRIMES AGAINST PROPERTY	1	20	21
CRIMES AGAINST SOCIETY	3	0	3
JANUARY 2019 TOTAL	21	46	67

LASD's Part 1 Crimes per Sector		
Sector	JANUARY	FYTD
Westside	0	8
San Fernando	0	0
San Gabriel Valley	0	8
Gateway Cities	2	12
South Bay	2	8
Total	4	36

LAPD's Part 1 Crimes per Sector		
Sector	JANUARY	FYTD
Valley Bureau		
Van Nuys	0	4
West Valley	0	1
North Hollywood	0	4
Foothill	0	2
Devonshire	0	0
Mission	0	1
Topanga	1	4
Central Bureau		
Central	1	14
Rampart	1	8
Hollenbeck	0	1
Northeast	0	3
Newton	2	11
West Bureau		
Hollywood	1	5
Wilshire	1	11
West LA	1	4
Pacific	0	1
Olympic	0	17
Southwest Bureau		
Southwest	10	59
Harbor	0	2
77th Street	9	49
Southeast	2	7
Total	29	208
Total Part 1 Crimes	33	244

ARRESTS			
AGENCY	LASD	LAPD	FYTD
Felony	5	2	44
Misdemeanor	29	4	184
TOTAL	34	6	228

CITATIONS			
AGENCY	LASD	LAPD	FYTD
Other Citations	24	11	183
Vehicle Code Citations	22	0	168
TOTAL	46	11	351

CALLS FOR SERVICE			
AGENCY	LASD	LAPD	FYTD
Routine	85	10	840
Priority	114	22	1,468
Emergency	8	2	169
TOTAL	207	34	2,477

DISPATCHED VS. PROACTIVE		
AGENCY	LASD	LAPD
Dispatched	1%	20%
Proactive	99%	80%
TOTAL	100%	100%

PERCENTAGE OF TIME SPENT ON THE BUS SYSTEM	
LINE	JANUARY
LASD BUS	78%
LAPD BUS	90%

LEGEND	
Los Angeles Police Department	
Los Angeles County Sheriff's Department	

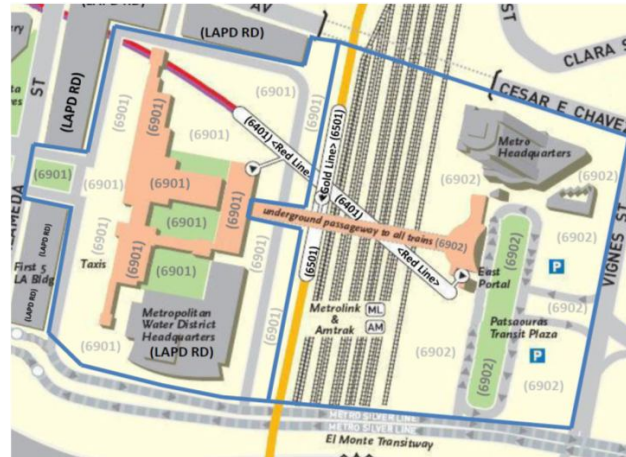
Bus Patrol

There were 6 more Part 1 crimes than the same period last year (27), which resulted in a 22.2% increase

UNION STATION

MONTHLY UPDATE ON TRANSIT POLICING PERFORMANCE - JANUARY 2019

REPORTED CRIME		
PART 1 CRIMES	LAPD	FYTD
Homicide	0	0
Rape	0	0
Robbery	0	6
Aggravated Assault	3	13
Aggravated Assault on Operator	0	0
Burglary	0	1
Larceny	9	47
Bike Theft	0	5
Motor Vehicle Theft	0	0
Arson	0	0
SUB-TOTAL	12	72
Selected Part 2 Crimes		
Battery	2	24
Battery Rail Operator	0	0
Sex Offenses	0	4
Weapons	0	0
Narcotics	0	0
Trespassing	1	8
Vandalism	2	7
SUB-TOTAL	5	43
TOTAL	17	115



Westside

Eastside

ARRESTS		
AGENCY	LAPD	FYTD
Felony	4	18
Misdemeanor	14	47
TOTAL	18	65

CITATIONS		
AGENCY	LAPD	FYTD
Other Citations	22	66
Vehicle Code Citations	4	20
TOTAL	26	86

CALLS FOR SERVICE		
AGENCY	LAPD	FYTD
Routine	N/A*	N/A*
Priority	N/A*	N/A*
Emergency	N/A*	N/A*
TOTAL	0	0

*Currently unable to report stats by Union Station

DISPATCHED VS. PROACTIVE	
AGENCY	LAPD
Dispatched	23%
Proactive	77%
TOTAL	100%

PERCENTAGE OF TIME SPENT AT UNION STATION	
LOCATION	LAPD
Union Station	88%

LEGEND	
Los Angeles Police Department	

	LAPD	TOTAL
CRIMES AGAINST PERSONS	5	5
CRIMES AGAINST PROPERTY	11	11
CRIMES AGAINST SOCIETY	1	1
JANUARY 2019 TOTAL	17	17

Union Station Highlights

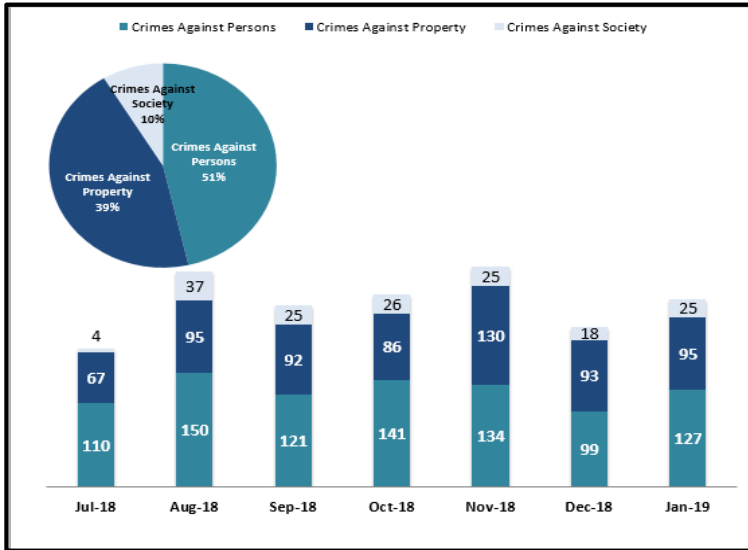
Union Station had 4 more Part 1 crimes than the same period last year (8), which resulted in a 50% increase

KEY PERFORMANCE INDICATORS

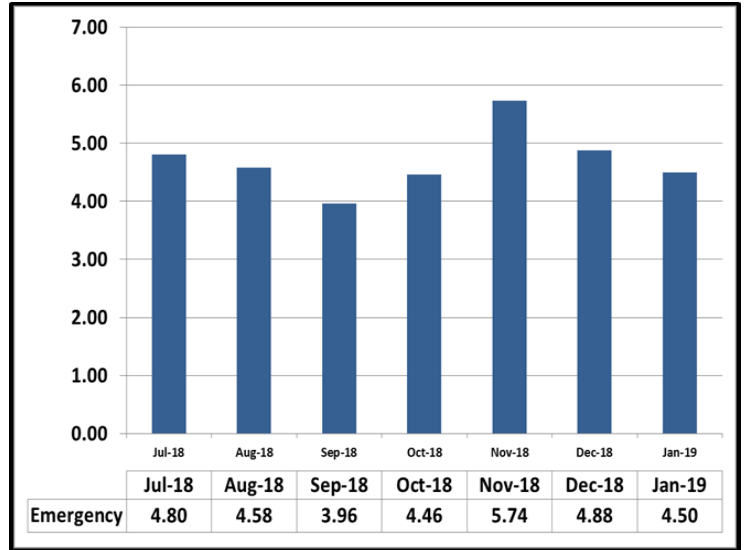
JANUARY 2019

Attachment C

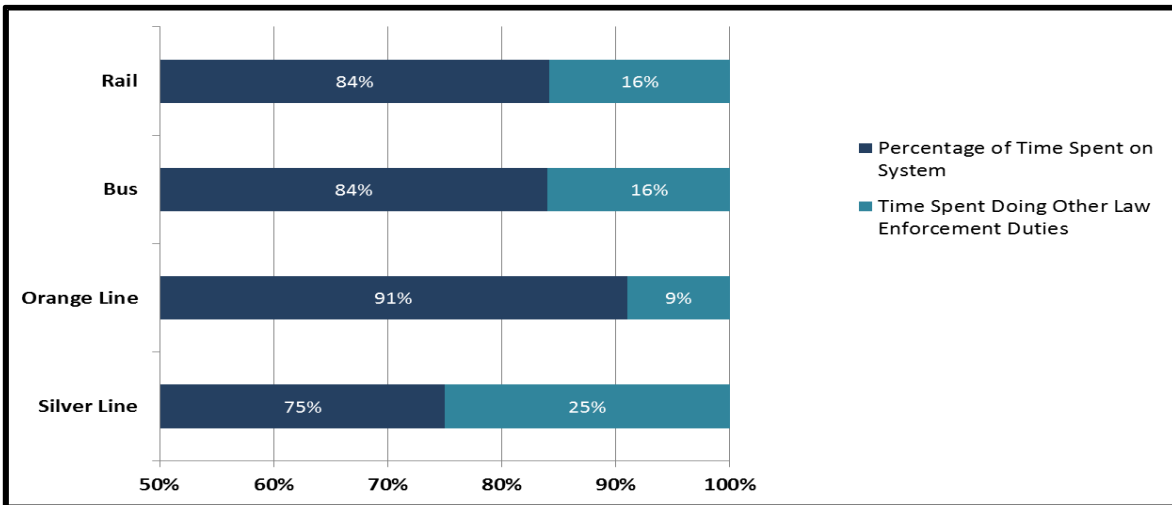
Crimes Against Persons, Property, and Society



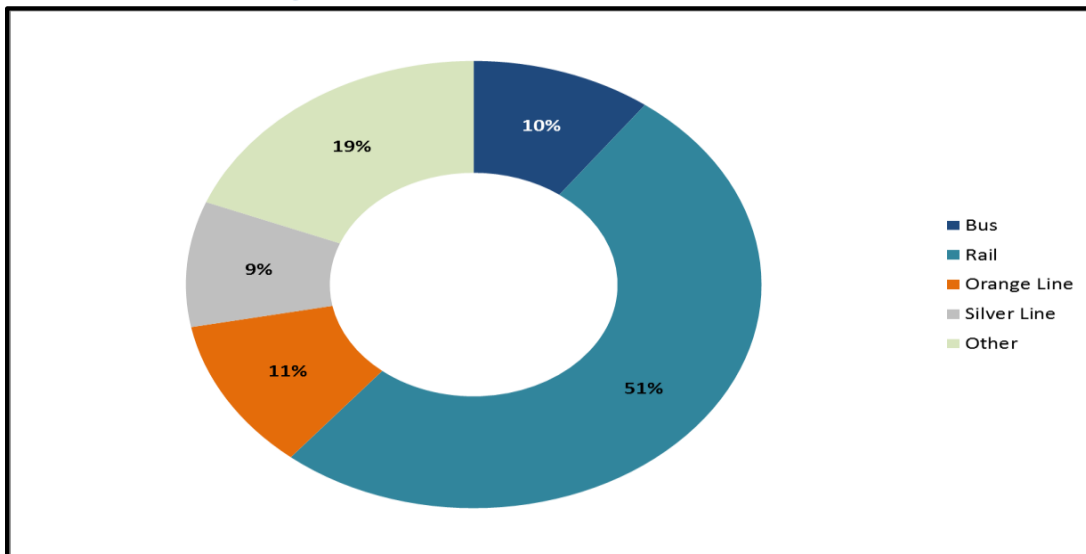
Average Emergency Response Times



Percentage of Time Spent on the System



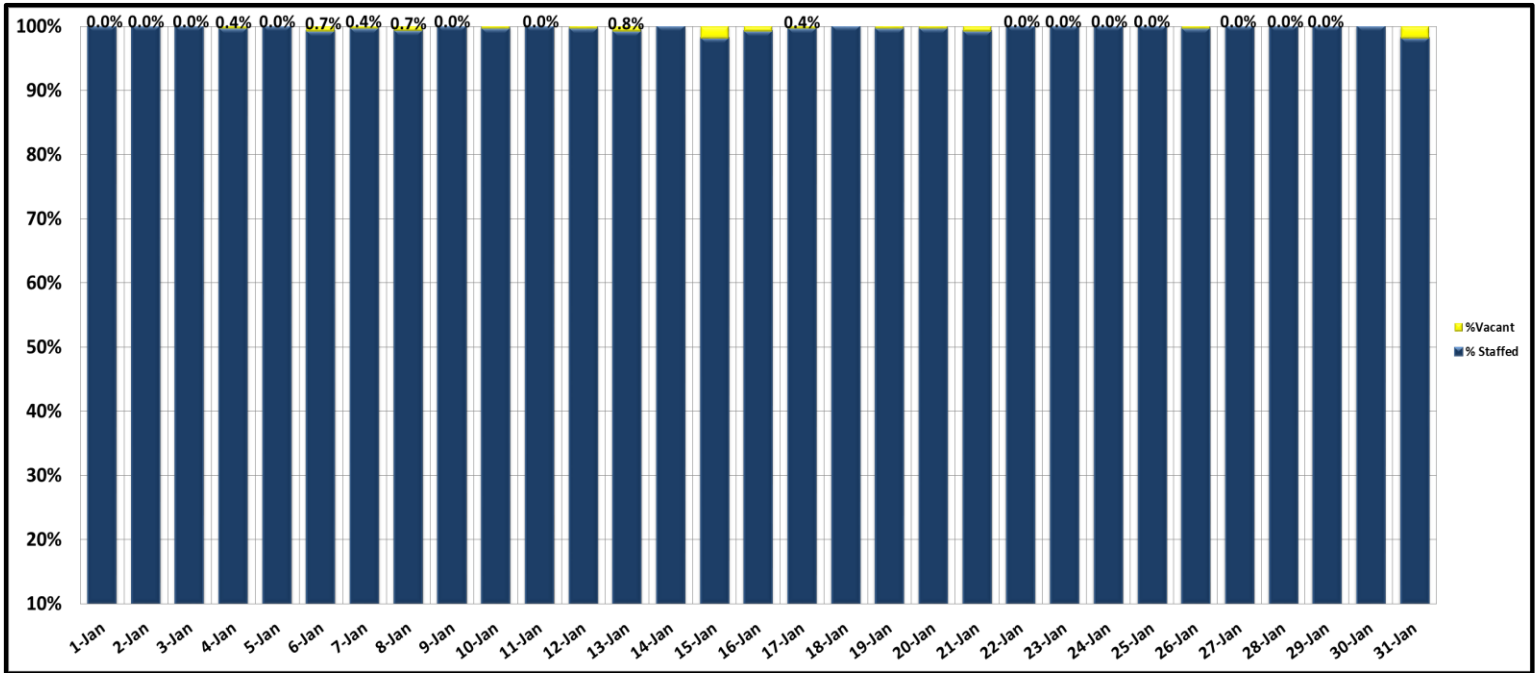
Percentage of Time Spent on the System as a Whole



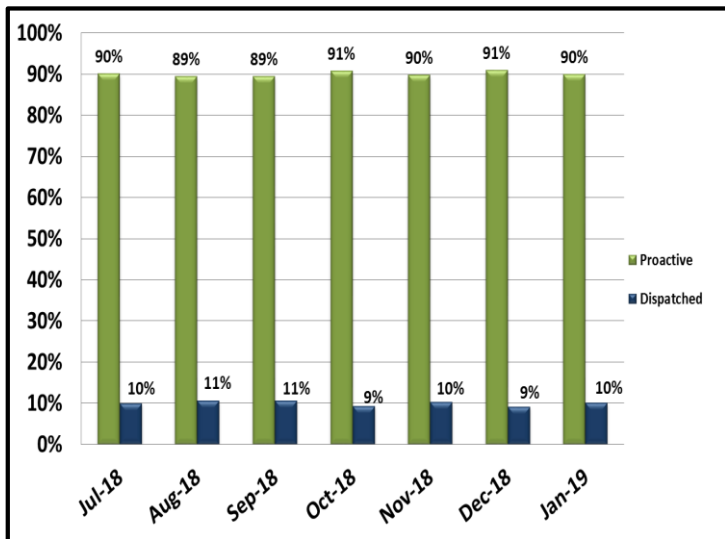
KEY PERFORMANCE INDICATORS

JANUARY 2019

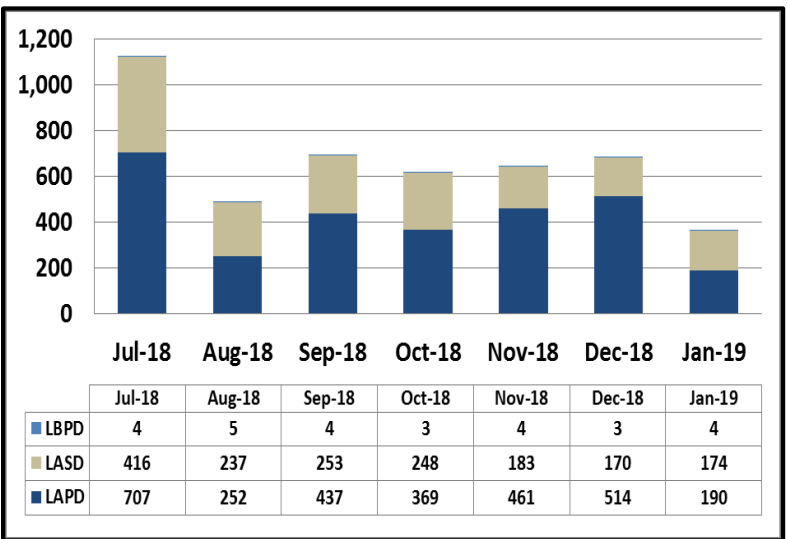
Ratio of Staffing Levels vs Vacant Assignments



Ratio of Proactive vs Dispatched Activity



Grade Crossing Operations



Grade Crossing Operation Locations January:

1. Blue Line Stations (109)
2. Expo Line Stations (96)
3. Gold Line Stations (163)

Transit Police

Monthly Crime Report



Attachment D

	2018	2019
	January	January
CRIMES AGAINST PERSONS		
Homicide	0	0
Rape	0	1
Robbery	27	29
Aggravated Assault	23	25
Aggravated Assault on Operator	0	0
Battery	68	55
Battery Rail Operator	9	8
Sex Offenses	9	9
SUB-TOTAL	136	127
CRIMES AGAINST PROPERTY		
Burglary	1	1
Larceny	53	77
Bike Theft	7	5
Motor Vehicle Theft	3	3
Arson	0	0
Other	0	0
Vandalism	16	9
SUB-TOTAL	80	95
CRIMES AGAINST SOCIETY		
Weapons	3	4
Narcotics	3	12
Trespassing	7	9
SUB-TOTAL	13	25
TOTAL	229	247
ENFORCEMENT EFFORTS		
Arrests	241	258
Citations	1,376	1,007
Fare Checks	376,026	116,551
Calls for Service	1,463	922