



Board Report

File #: 2021-0241, **File Type:** Informational Report

Agenda Number: 23.

**OPERATIONS, SAFETY, AND CUSTOMER EXPERIENCE COMMITTEE
MAY 20, 2021**

SUBJECT: STATUS OF MOTION 10.1: FY21 OPERATIONS RECOVERY PLAN (MAY 2021)

ACTION: RECEIVE AND FILE

RECOMMENDATION

RECEIVE AND FILE status report on the May 2021 response to Motion 10.1: FY21 Operations Recovery Plan.

ISSUE

On September 24, 2020, the Metro Board of Directors (Board) approved Motion 10.1: FY21 Operations Recovery Plan (Attachment A) directing staff to:

- A. Report back to the Operations, Safety, and Customer Experience Committee in 60 days, with updates every 60 days thereafter, with an FY21 Operations Recovery Plan that achieves the following outcomes:
 - 1. Aligns bus lines with their respective NextGen service tier standards.
 - 2. Does not exceed maximum load factors on buses and trains based on industry accepted health and safety standards.
 - 3. Sets criteria for adding service in anticipation of future on-street conditions related to economic sector and/or school re-openings and the return of traffic congestion and effect on bus speeds.
 - 4. Takes full advantage of operational savings from faster bus speeds to achieve performance-based service outcomes.
 - 5. Restores revenue service hours as appropriate to achieve all of the above outcomes.
- B. Report back to the Finance, Budget, and Audit Committee in 60 days with an amendment to the FY21 Budget, if necessary, to implement the above FY21 Operations Recovery Plan.

This report addresses Items 1-5 in Section A above.

BACKGROUND

In September 2020, the Board approved the FY21 Annual Budget which included 5.6M annual Revenue Service Hours (RSH) for Metro bus operations. Motion 10.1: FY21 Operations Recovery Plan was approved as part of the budget deliberations to direct staff to monitor service performance and determine criteria for increasing service to levels envisioned by NextGen while balancing vehicle loads, financial constraints, public health directives, and service quality.

DISCUSSION

The following provides the status update for each item listed in the motion:

1. Aligns bus lines with their respective NextGen service tier standards -

No Change. Attachment B lists all bus lines by service tier for the December 2020 and June 2021 shake-ups, as well as the NextGen Transit First full buildout scenario frequencies.

2. Do not exceed maximum load factors on buses and trains based on industry accepted health and safety standards

Service continues to be scheduled to maintain a max. load standard of 75% of seated capacity during any 20 min. time slice during peak periods and 60 min. time slices during off peak period. A total of 47 weekday, 86 Saturday and 48 Sunday trips were added to the bus network starting April 12, 2021 to address load issues on specific lines detailed in Attachment C.

3. Set criteria for adding service in anticipation of future on-street conditions related to economic sector and/or school reopenings and the return of traffic congestion and effect on bus speeds

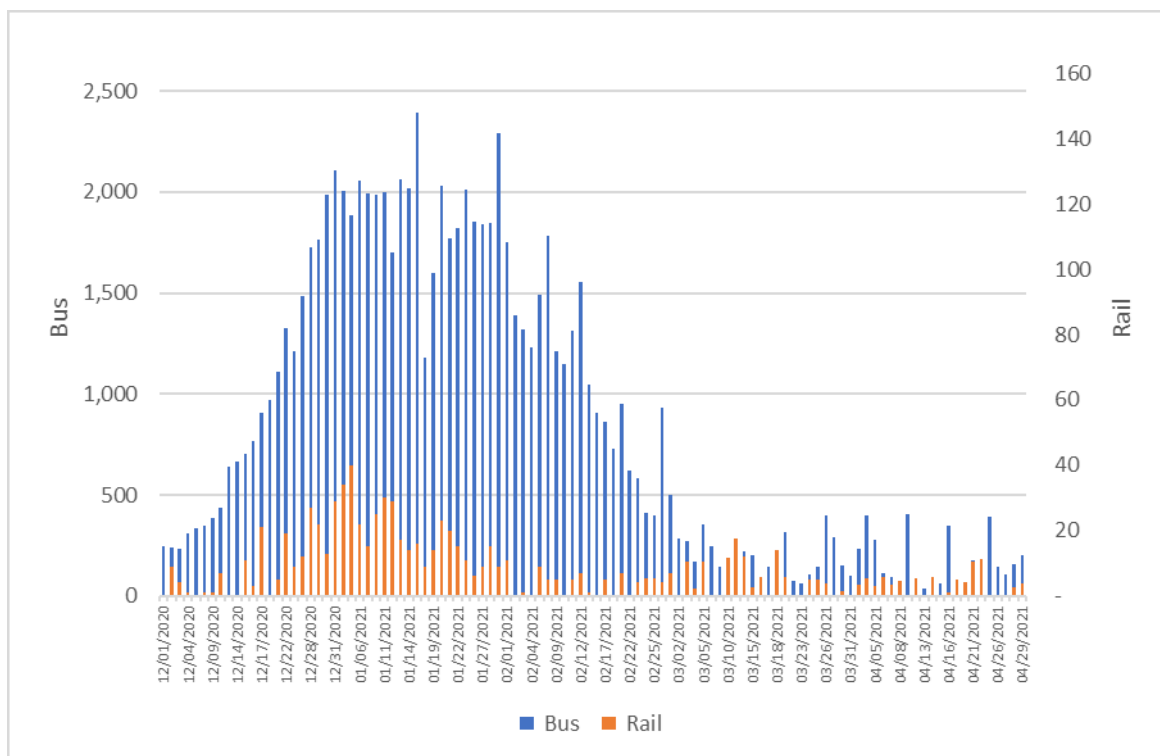
Percent of Trips Exceeding Maximum Load Standard

Maximum loads on all Metro bus trips continue to be monitored weekly. The percent of trips on average each week exceeding the 75% of seated load standard during April 2021 is as follows:

- Weekdays: average 1.8% or 196 trips (range 1.7% to 2.0%) so on average meets the target
- Saturdays: average 5.3% or 367 trips (range 4.9% to 5.7%)
- Sundays: average 2.8% or 183 trips (range 2.5% to 3.2%)

Canceled work hours for bus continue to hover around the pre-pandemic levels (see Figure 1). With cancelled service stabilized, 47 weekday, 86 Saturday and 48 Sunday trips were added to the bus network starting April 12, 2021 to address load issues to accommodate heavier loads.

Figure 1
Cancelled Work Hours (Weekdays)



The next scheduled service change will be June 27, 2021 which will continue implementation of the NextGen bus plan including a significant amount of network changes and reallocation of underutilized services to high ridership lines. The June 2021 service change focus on the San Fernando Valley and San Gabriel Valley to improve service and simplify the bus network. There will also be some changes in Beverly Hills and Compton areas as well as a new line linking northeast LA directly with East Hollywood. The changes also include consolidation of 8 more Metro Rapid lines with partner local lines on key corridors. In total, over 90 of Metro’s 141 lines operating today will be changed in the June 2021 service change.

In addition, per Motion 27.1: FY22 Service Restoration, an additional 880K annualized RSH will also be added to the current 5.62 million annualized RSH bringing the base service levels beginning in FY22 to 6.5 million annual RSH. As a result, service will increase on many of Metro’s highest ridership lines as ridership continues to slowly recover from the pandemic low point in mid-2020.

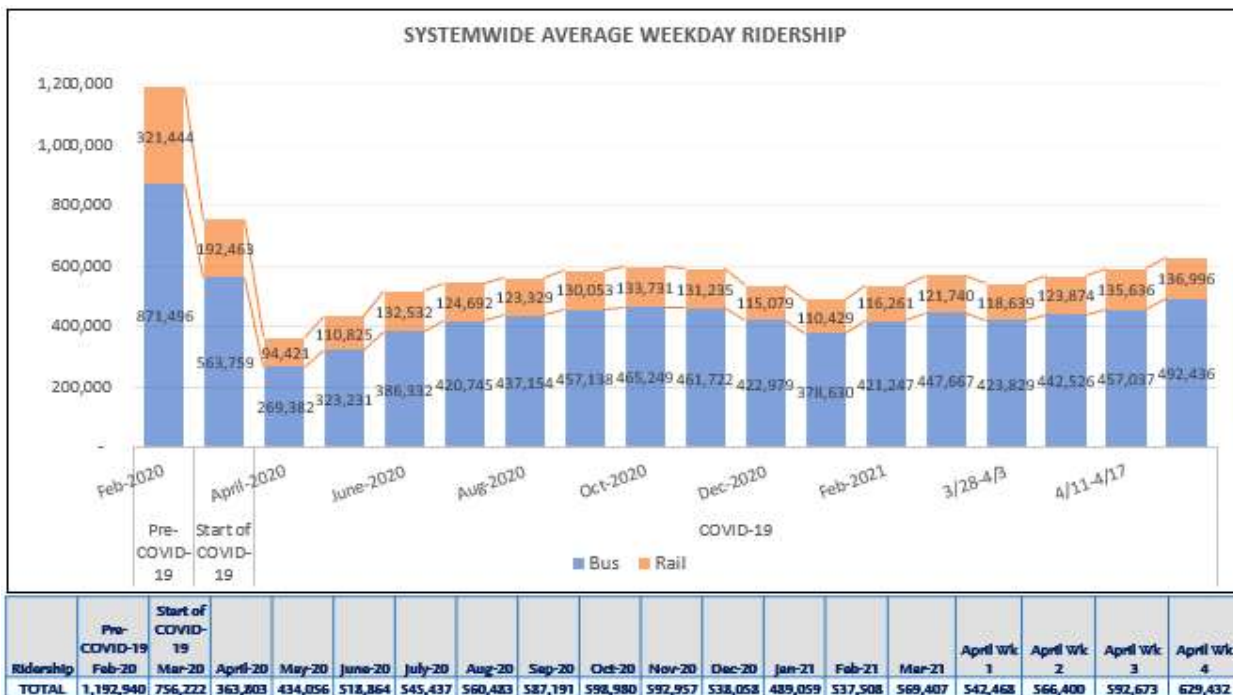
Loads will continue to be monitored on a weekly basis and further adjustments can be made if needed through interim schedule adjustments.

Ridership Potential and Public Health Directives

During April 2021 average weekday bus ridership increased to about 45% below pre-COVID levels, compared to 50% below in previous months. Saturday and Sunday ridership were about 30% and 26% down compared to pre-COVID, respectively. Ridership is anticipated to grow

steadily through FY21Q4 given the declining number of new COVID cases, significant number of vaccinations and the State’s anticipated reopen on June 15, 2021. Figure 2 shows bus and rail ridership trends through the COVID pandemic to date.

Figure 2
Systemwide Average Weekday Ridership



Ridership will continue to be monitored on a weekly and monthly basis.

Resource Availability

Financial

No Change. The Board adopted Motion 11.1 in January 2021 that reallocated \$24.3M in the FY21 mid-year budget adjustment for the restoration of transit service and directed staff to immediately begin preparing to restore service no later than end of FY21 to increase the agency’s capacity to run 7.0 million annual bus RSH. The budget planning assumptions for service levels in FY22, as presented to the Board in February 2021, outlines a plan to restore bus service levels, including:

- June 2021 - Increase from 5.62 million current annualized RSH to 6.5 million;
- September 2021 - Increase to 7.0 million annualized RSH;

Staffing and Accelerated Bus Operator Hiring Activities

Implementing the FY22 service level increases is highly dependent on the availability of operators. Operations has accelerated bus operator training classes and will continue with our

enhanced hiring plan until enough operators are onboarded to support the final adopted FY22 RSH plan. In addition, Operations will continue to work closely with Human Capital & Development to return as many existing operators out on leaves as soon as possible. It should be noted that through early May 2021, Metro has received over 1,346 applications in the hiring pipeline with interviews scheduled, classes in progress, and 2 classes scheduled per month through the summer. All class space, including the use of non-Metro facilities, are currently being planned in a manner that is safe and adheres to all COVID-19 guidelines.

Metro' accelerated bus operator hiring plan includes, but is not limited to the following:

- ✓ Bus Operator Specific Landing Web page
- ✓ Recruitment Flyer
- ✓ Organic Social media and source posts
- ✓ Paid Search, social media, Indeed advertising
- ✓ Metro-owned Bus and Rail ads including bus wraps & car cards
- ✓ Paid Radio Ads (ESPN, Ellen K Radio Blog & LA Kings Newsletter and Local News Channels)
- ✓ Bus Operator Hiring Video
- ✓ Bus Operator Hiring Featured on external and internal job posting emails
- ✓ Board of Director (BOD) Media Tool Kit
- ✓ Metro-owned Bus and Rail ads including bus wraps & car cards

Performance

Boardings per RSH for March and April 2021 are trending around 26, short of the 30 boardings per RSH. Should ridership increase through the remainder of FY21 with mass vaccinations and the full reopening of the state anticipated mid-June 2021, the performance of this indicator would expect to improve.

4. Takes full advantage of operational savings from faster bus speeds to achieve performance-based service outcomes

The NextGen Speed and Reliability team continue to make progress towards implementing bus lanes, improving Transit Signal Priority (TSP) and other enhancements to the bus network. Since January 2021, the team is has been working on implementation of a bus lane on Alvarado Street, Grand and Olive Streets in downtown Los Angeles, improving signal priority on Metro G Line (Orange), and continuing to work with LADOT to identify future bus lane corridors and expanding TSP to more buses along non-TSP Tier 1 corridors under the NextGen Bus Plan.

5. Restore revenue service hours as appropriate to achieve all the above outcomes

The FY22 service restoration plan as described has been developed based on the criteria established in item #3 above and is consistent with Motion 11.1 related to FY2021 (FY21) Mid-Year Budget.

FINANCIAL IMPACT

Implementation of Metro's final FY22 bus service restoration plan will be adopted as part of the FY22

annual budget.

Impact to Budget

There is no impact to the approved Metro FY21 budget and allocated funding sources. The planned changes are made within the revenue service hours budgeted.

DETERMINATION OF SAFETY IMPACT

This report does not have a negative effect on the safety of our customers or employees.

IMPLEMENTATION OF STRATEGIC PLAN GOALS

Recommendation supports strategic plan goal #1: Provide high quality mobility options that enable people to spend less time traveling. The service changes also respond to the sub-goal of investing in a world class bus system that is reliable, convenient, safe, and attractive to more users for more trips.

NEXT STEPS

This is the last scheduled report back on Motion 10.1. Future updates to service recovery and operator hiring status will be presented as part of the COO monthly COVID report.

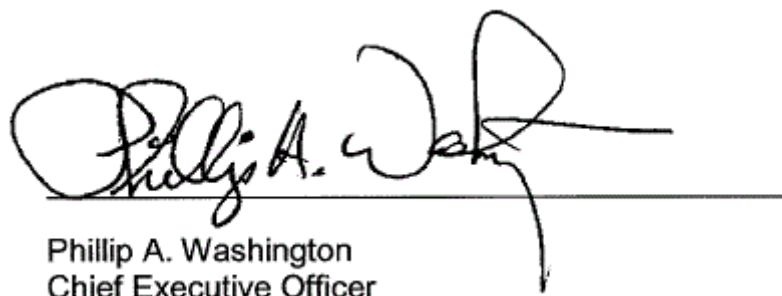
ATTACHMENTS

Attachment A - Motion 10.1: FY21 Operations Recovery Plan

Attachment B - Dec. 2020 & June 2021 Scheduled vs. NextGen Planned Frequencies

Prepared by: Nancy Saravia, Director, Financial & Admin. Mgmt. Svc. (213) 922-1217
Conan Cheung, Sr Exec Officer, Service Development, (213) 418-3034

Reviewed by: James T. Gallagher, Chief Operations Officer, (213) 418-3108



Phillip A. Washington
Chief Executive Officer



Board Report

File #: 2020-0644, **File Type:** Motion / Motion Response

Agenda Number: 10.1.

REGULAR BOARD MEETING SEPTEMBER 24, 2020

Motion by:

DIRECTORS BONIN, GARCETTI, SOLIS, GARCIA, AND KUEHL

Related to Item 10: Fiscal Year 2021 (FY21) Budget

The COVID-19 Crisis has created incredible strain on Metro's operations and finances. An unprecedented drop in sales tax and other revenue has caused a \$1.2 billion decrease in Metro's budget from FY20 to FY21, with additional volatility likely throughout FY21 and beyond. At the same time, COVID-19 health and safety measures and labor agreements have increased operational costs per hour of service. Despite an infusion of federal funding from the CARES Act, Metro still faces an uncertain operations budget that will require continuous updates throughout the fiscal year.

The proposed FY21 budget is an accurate reflection of today's greatly diminished transit service levels. However, maintaining current service levels for the remainder of the fiscal year is not acceptable for riders nor is it consistent with the agency's strategic priorities, including NextGen. At a time when COVID-19 has exposed all of the region's underlying inequities, Metro must plan for and facilitate an equitable recovery that prioritizes the mobility needs of our county's most vulnerable populations, who disproportionately rely on bus service.

Metro should prepare an FY21 Operations Recovery Plan that outlines a clear decision-making framework for restoring service and identifies the financial and human resources needed at each stage of recovery. This Plan should clearly articulate how NextGen parameters are being applied to interim service decisions, in addition to public health and customer experience considerations. Most importantly, this Plan should commit to achieving NextGen's performance outcomes (revenue miles, number of high-frequency lines, number of people with access to frequent service), even if pre-COVID revenue service hours may not be necessary to achieve them.

SUBJECT: FY21 OPERATIONS RECOVERY PLAN

RECOMMENDATION

APPROVE Motion by Directors Bonin, Garcetti, Solis, Garcia, and Kuehl that the Board direct the Chief Executive Officer to:

- A. Report back to the Operations, Safety, and Customer Experience Committee in 60 days, with updates every 60 days thereafter, with an FY21 Operations Recovery Plan that achieves the following outcomes:
1. Aligns bus lines with their respective NextGen service tier standards.
 2. Does not exceed maximum load factors on buses and trains based on industry-accepted health and safety standards.
 3. Sets criteria for adding service in anticipation of future on-street conditions related to economic sector and/or school reopenings and the return of traffic congestion and effect on bus speeds.
 4. Takes full advantage of operational savings from faster bus speeds to achieve performance-based service outcomes.
 5. Restores revenue service hours as appropriate to achieve all of the above outcomes.
- B. Report back to the Finance, Budget, and Audit Committee in 60 days with an amendment to the FY21 Budget, if necessary, to implement the above FY21 Operations Recovery Plan.

Attachment B

December 2020/June 2021 Scheduled vs. NextGen Planned Frequencies

Line(s)	Corridor	Service Tier	Dec 2020				June 2021				NextGen			
			Weekday Peak	Weekday Midday	Saturday Daytime	Sunday Daytime	Weekday Peak	Weekday Midday	Saturday Daytime	Sunday Daytime	Weekday Peak	Weekday Midday	Saturday Daytime	Sunday Daytime
2, 302	Sunset Bl	Tier 1	15-20	15	15-20	15-20	12	12	15	15	7.5	10	12	12
200	Alvarado St	Tier 1	10-15	10-15	10-20	10-30	7.5-10	10	10	10	See Line 2	See Line 2	See Line 2	See Line 2
4	Santa Monica Bl	Tier 1	15-20	15	15	15	12	12	12	12	6	7.5	10	10
704	Santa Monica Bl Metro Rapid	Tier 1	18-25	20-25	20-30	20-30	15-20	20	20	20	See Line 4	See Line 4	See Line 4	See Line 4
16, 316	3rd St	Tier 1	5-9	5-9	6-12	6-12	5-7.5	5-8	6-10	6-10	6	7.5	7.5	7.5
18	Whittier Bl & W. 6th St	Tier 1	8-12	9-12	11-12	12-16	5-7.5	7.5	7.5	7.5	6	7.5	7.5	7.5
20	Wilshire Bl	Tier 1	12-25	15	15	15	12-15	12	12	12	5	5	6	6
720	Wilshire Bl Metro Rapid	Tier 1	6-15	7-15	10-17	10-17	5-6	7.5	7.5	7.5	10	See Line 20	See Line 20	See Line 20
28	Olympic Bl	Tier 1	8-15	12-15	15-18	15-18	7.5-10	12	12	12	7.5	10	15	15
728	Olympic Bl Metro Rapid	Tier 1	N/A	N/A	N/A	N/A	N/A	N/A	N/A	N/A	See Line 28	See Line 28	See Line 28	See Line 28
30, 330	Pico Bl & E. 1st St	Tier 1	10-20	12	10-15	10-15	7.5	10	10	10	10	10	15	15
33	Venice Bl	Tier 1	15-22	15	16-22	16-22	12-15	12	12-15	12-15	7.5	10	10	10
733	Venice Bl Metro Rapid	Tier 1	20-30	15-20	20-22	20-22	20	15-20	20	20	N/A	N/A	N/A	N/A
40	MLK, Crenshaw Bl, Hawthorne Bl	Tier 1	10-15	15	20	20	7-5-10	12	12	15	10	10	15	15
740	Crenshaw Bl, Hawthorne Bl Metro Rapid	Tier 1	N/A	N/A	N/A	N/A	N/A	N/A	N/A	N/A	See Line 40, 212	See Line 40, 212	See Line 40, 212	See Line 40, 212
45	Broadway	Tier 1	10-15	10-15	10-15	10-15	10	10	10	10	5	7.5	7.5	7.5
745	Broadway Metro Rapid	Tier 1	N/A	N/A	N/A	N/A	N/A	N/A	N/A	N/A	See Line 45	See Line 45	See Line 45	See Line 45
51, 52, 351	Avalon Bl & 7th St	Tier 1	6-12	10	8-14	10-14	5-6	7.5	7.5	10	7.5	7.5	10	10
53	Central Ave	Tier 1	13-25	15	18-22	18-22	10-12	12	15	15	10	10	20	20
60	Long Beach Bl	Tier 1	5-10	10	12-15	12-15	5-7.5	10	10	10	5	10	10	10
760	Long Beach Bl Metro Rapid	Tier 1	N/A	N/A	N/A	N/A	N/A	N/A	N/A	N/A	See Line 60	See Line 60	See Line 60	See Line 60
66	E. Olympic Bl, 8th St	Tier 1	10-15	15	13-20	20	6-10	10	15	15	10	10	15	15
70	Garvey Ave	Tier 1	12-15	15-20	12-18	12-18	7.5-10	7.5	12	12	7.5	7.5	10	10
770	Garvey Ave/Cesar Chavez Av Metro Rapid	Tier 1	10-25	25	N/A	N/A	N/A	N/A	N/A	N/A	See Line 70	See Line 70	See Line 70	See Line 70
78, 79, 378	Huntington Dr, Las Tunas Dr	Tier 1	10-15	15	15-20	15-20	10-12	12	15	15	10	10	20	20
105	Vernon Ave, La Cienega Bl	Tier 1	9-12	9-10	12-20	15-23	8-10	8-10	12-15	15	10	10	15	15
705	Vernon Ave, La Cienega Bl Metro Rapid	Tier 1	N/A	N/A	N/A	N/A	N/A	N/A	N/A	N/A	See Line 105	See Line 105	See Line 105	See Line 105
108, 358	Slauson Ave	Tier 1	10-20	20	20	20	7.5-10	15	15	15	7.5	7.5	15	15
111	Florence Ave	Tier 1	12-20	12-15	15-20	15-20	12	12	15	15	7.5	10	15	15
180, 181	Pasadena - Glendale - Hollywood	Tier 1	12-15	10-15	12-15	12-15	10	10	12	12	7.5	7.5	15	15
780	Pasadena - Glendale - Hollywood Metro Rapid	Tier 1	20-30	30	N/A	N/A	N/A	N/A	N/A	N/A	See Line 180	See Line 180	See Line 180	See Line 180
217	Fairfax Ave, Hollywood Bl	Tier 1	15-40	15-20	15-20	15-20	10	10	15	15	See Line 180	See Line 180	See Line 180	See Line 180
204	Vermont Ave	Tier 1	12-20	12-15	15-20	15-25	10-12	12	12	12	5	5	7.5	7.5
754	Vermont Ave Metro Rapid	Tier 1	12-20	15-18	12-20	15-25	12-15	12-15	12-15	12-15	10	N/A	N/A	N/A
207	Western Ave	Tier 1	12-20	12-15	10-20	10-20	6-7.5	7.5	10	10	6	7.5	12	12
757	Western Ave Metro Rapid	Tier 1	12-20	12-15	N/A	N/A	N/A	N/A	N/A	N/A	See Line 207	See Line 207	See Line 207	See Line 207
210	Crenshaw Bl	Tier 1	10-12	10-15	15-22	15-22	10-12	10	12	12	10	10	10	10
710	Crenshaw Bl Metro Rapid	Tier 1	N/A	N/A	N/A	N/A	N/A	N/A	N/A	N/A	See Line 210	See Line 210	See Line 210	N/A
212, 312	La Brea Ave	Tier 1	15-30	15-22	17-30	17-30	15	15	20	20	7.5	10	15	15
233	Van Nuys Bl	Tier 1	12-20	12-15	15-20	15-20	12	12	12	12	10	10	10	10
234	Sepulveda Bl	Tier 1	20-30	20-30	20-25	22-30	12	12	15	15	7.5	7.5	10	10
734	Sepulveda Bl Metro Rapid	Tier 1	20	20	N/A	N/A	N/A	N/A	N/A	N/A	See Line 234	See Line 234	N/A	N/A
744	Van Nuys Bl, Reseda Bl Metro Rapid	Tier 1	20	20	30	30	N/A	N/A	N/A	N/A	See Lines 240, 761	See Lines 240, 761	See Lines 240, 761	See Lines 240, 761
761	Van Nuys Bl Westside Metro Rapid	Tier 1	N/A	N/A	N/A	N/A	20	20	30	30	10-15	15	30	30
788	Van Nuys Bl Westside Metro Rapid	Tier 1	N/A	N/A	N/A	N/A	N/A	N/A	N/A	N/A	See Line 761	N/A	N/A	N/A
240	Reseda Bl	Tier 1	30-40	30-40	30-40	30-40	12	12	15	15	10	10	15	15
251	Soto St	Tier 1	10-20	10-15	10-15	10-15	7.5-10	10	10	10	10	10	15	15
751	Soto St Metro Rapid	Tier 1	N/A	N/A	N/A	N/A	N/A	N/A	N/A	N/A	See Line 251	See Line 251	N/A	N/A
901	G Line (Orange) BRT	Tier 1	9-15	10	10	10	7.5	10	10	10	5	10	10	10

Line(s)	Corridor	Service Tier	Dec 2020				June 2021				NextGen			
			Weekday Peak	Weekday Midday	Saturday Daytime	Sunday Daytime	Weekday Peak	Weekday Midday	Saturday Daytime	Sunday Daytime	Weekday Peak	Weekday Midday	Saturday Daytime	Sunday Daytime
910/950	J Line (Silver) BRT	Tier 1	9-15	12-15	15	15	7.5-10	10	15	15	5	10	15	15
10	Melrose Av	Tier 2	15-25	15	20	20	15	15	20	20	10	15	20	20
14	Beverly Bl	Tier 2	10-40	18-20	15-20	15-20	10-15	15	15	15	10	15	20	20
35	Washington Bl	Tier 2	15-30	15	20	20	15-30	15	20	20	12	12	15	15
37	W. Adams Bl	Tier 2	10-40	18-20	15-20	15-20	10-15	15	15	15	10	15	20	20
38	W. Jefferson Bl	Tier 2	30-60	30	40	40	30-60	30	40	40	12	12	15	15
48	Main & San Pedro	Tier 2	30-50	30	40	40	30	30	40	40	10	15	20	20
55, 355	Compton Ave	Tier 2	12-15	15	22-30	22-30	12-15	15	22-30	22-30	12	12	20	20
76	Valley Bl	Tier 2	20-25	20	20-30	20-30	20-25	20	20-30	20-30	12	12	20	20
81	Figueroa St	Tier 2	15-25	15-20	18-23	18-23	15-20	15-20	15-20	15-20	10	12	20	20
94	San Fernando Rd	Tier 2	20-45	20-23	15-22	20-24	15	15	30	30	15	15	30	30
110	Gage Ave	Tier 2	20-35	25-35	33-35	33-35	20-35	25-35	33-35	33-35	15	15	30	30
115	Manchester Ave, Firestone Bl	Tier 2	20-25	20	15-20	20	20-25	20	15-20	20	12	12	20	20
117	Century Bl	Tier 2	23-40	23-26	20-30	20-30	20-30	23-26	20-30	20-30	15	15	30	30
152, 353	Roscoe Bl	Tier 2	15-20	15	20-30	25-35	15	15	20	20	15	15	20	20
162-163	Sherman Wy	Tier 2	20	20	20-35	30-35	15	15	20	30	15	15	30	30
164	Victory Bl	Tier 2	35	35	35	35	20	20	30	30	15	15	30	30
165	Vanowen Ave	Tier 2	20-40	30-35	30-40	30-40	15-20	20	30	30	15	15	30	30
166, 364	Nordhoff St	Tier 2	20	20	30-45	40-45	15	15	30	30	15	15	30	30
206	Normandie Ave	Tier 2	20-30	20-23	20-30	20-30	20-30	20-23	20-30	20-30	10	15	20	20
224	Lankershin Bl, San Fernando Rd	Tier 2	20-40	20	20-30	20-30	15-20	20	20	20	15	15	30	30
260	Atlantic Bl Fair Oaks Ave	Tier 2	10-30	10-20	20-35	20-35	10-20	10-20	20	20	12	12	20	20
762	Atlantic Bl Fair Oaks Ave Metro Rapid	Tier 2	N/A	N/A	N/A	N/A	N/A	N/A	N/A	N/A	See Line 260	See Line 260	N/A	N/A
601	Warner Center	Tier 2	20	20	20	20	20	20	20	20	15	15	15	15
603	Glendale - Hoover St	Tier 2	12-15	15	11-23	15-30	12	12	12	15	12	12	20	20
605	LAC USC Med Ctr Shuttle	Tier 2	25-35	35	35	35	15	15	20	20	15	15	20	20
610	Rossmore Ave, Vine St	Tier 2	N/A	N/A	N/A	N/A	N/A	N/A	N/A	N/A	15	15	15	15
62	Telegraph Rd, Pioneer Bl	Tier 3	20-60	30-50	45-60	45-60	20-60	30-50	45-60	45-60	See Line 262	See Line 262	See Line 262	See Line 262
262	Telegraph Rd, Pioneer Bl	Tier 3	N/A	N/A	N/A	N/A	N/A	N/A	N/A	N/A	20	20	30	30
68	Cesar Chavez Ave	Tier 3	18-27	20-23	17-23	17-23	N/A	N/A	N/A	N/A	See Line 70	See Line 70	See Line 70	See Line 70
106	East LA College, LAC USC Med Ctr, Cal State LA	Tier 3	50	50	N/A	N/A	20/40	20/40	40	40	20	20	20	20
79	Huntington Dr	Tier 3	See Line 78	See Line 78	See Line 78	See Line 78	See Line 78	See Line 78	See Line 78	See Line 78	See Lines 78, 179	See Lines 78, 179	See Lines 78, 179	See Lines 78, 179
179	Huntington Dr	Tier 3	N/A	N/A	N/A	N/A	N/A	N/A	N/A	N/A	30	30	40	40
83	York Bl	Tier 3	35-50	40-47	35-45	35-45	N/A	N/A	N/A	N/A	See Line 182	See Line 182	See Line 182	See Line 182
182	York Bl, Rowena Ave	Tier 3	N/A	N/A	N/A	N/A	30	30	30	30	30	30	30	30
90, 91	Foothill Bl	Tier 3	20-30	30	30-45	30-45	20-30	30	30	30	20	20	30	30
690	Foothill Bl (Sunland - Sylmar)	Tier 3	N/A	N/A	N/A	N/A	30	30	30	30	30	30	30	30
92	Glenoaks Bl	Tier 3	37-50	40-45	40-45	40-45	25	25	40-45	40-45	20	20	30	30
120	Imperial Hwy	Tier 3	30-60	30-60	60	60	30-60	30-60	60	60	30	30	60	60
125	Rosecrans Bl	Tier 3	20-60	25-50	30-60	30-60	20	20	30	30	20	20	30	30
127	Compton & Somerset Bls	Tier 3	30-60	30-60	N/A	N/A	30-60	30-60	30-60	30-60	15-30	15-30	30-60	30-60
130	Artesia Bl	Tier 3	48-60	60	60	60	40-45	40-45	60	60	30	30	60	60
130A	Artesia Bl (west of Artesia Station)	Tier 3	N/A	N/A	N/A	N/A	40-45	40-45	60	60	30	30	60	60
150	Ventura Bl	Tier 3	30-40	30-40	30-40	30-40	20	20	30	30	20	20	30	30
245	Topanga Canyon Bl	Tier 3	50-60	50-60	65	65	N/A	N/A	N/A	N/A	See Line 150	See Line 150	See Line 150	See Line 150
750	Ventura Bl Metro Rapid	Tier 3	20-30	30	N/A	N/A	N/A	N/A	N/A	N/A	See Line 150	See Line 150	See Line 150	See Line 150
169	Saticoy St	Tier 3	60-65	60	N/A	N/A	60-65	60	N/A	N/A	30	30	60	60
205	Wilmington Western Ave	Tier 3	30-65	45-65	55-65	55-65	30	30	60	60	30	30	60	60
230	Laurel Canyon Bl	Tier 3	35	35	35	35	30	30	35	35	20	20	30	30
232	S. Sepulveda Bl, PCH	Tier 3	15-35	30	30-35	30-35	15-20	30	30	30	15	30	30	30
236	Balboa Bl	Tier 3	70	70	70	70	30	30	60	60	30	30	60	60

Line(s)	Corridor	Service Tier	Dec 2020				June 2021				NextGen			
			Weekday Peak	Weekday Midday	Saturday Daytime	Sunday Daytime	Weekday Peak	Weekday Midday	Saturday Daytime	Sunday Daytime	Weekday Peak	Weekday Midday	Saturday Daytime	Sunday Daytime
242, 243	Tampa Ave, Winnetka Ave	Tier 3	60	60	N/A	N/A	60	60	60	N/A	30	30	60	60
244	De Soto Ave	Tier 3	50-60	50-60	N/A	N/A	30	30	30	30	20	30	40	40
246	Avalon Bl - San Pedro	Tier 3	35-60	60	60	60	35-60	60	60	60	30	30	30	30
261	Artesia - Long Beach Stations	Tier 3	N/A	N/A	N/A	N/A	N/A	N/A	N/A	N/A	20	20	30	30
266	Rosemead Bl, Lakewood Bl	Tier 3	25-35	35	45-50	45-50	20	20	30	30	20	20	30	30
267	El Monte Pasadena - Altadena via Temple City Bl	Tier 3	60	60	60	60	30	30	60	60	30	30	60	60
662	Pasadena - Altadena via Lake Ave	Tier 3	N/A	N/A	N/A	N/A	30	30	30	30	30	30	30	30
268	El Monte - Altadena - JPL	Tier 3	55	55	55	55	30	60	60	60	30	30	60	60
294	San Fernando Rd (Burbank - Sylmar)	Tier 3	N/A	N/A	N/A	N/A	30	30	30	30	30	30	30	30
794	San Fernando Rd Metro Rapid	Tier 3	20-30	30	N/A	N/A	N/A	N/A	N/A	N/A	See Lines 94, 294	See Lines 94, 294	See Lines 94, 294	See Lines 94, 294
450	San Pedro - Harbor Gateway - downtown LA	Tier 3	N/A	N/A	N/A	N/A	N/A	N/A	N/A	N/A	20	30	30	30
950	San Pedro J Line BRT	Tier 3	15	30	30	30	15	30	30	30	See Line 450	See Line 450	See Line 450	See Line 450
460	Disneyland - Norwalk Station - downtown LA	Tier 3	20-35	25-35	28-33	28-33	20-35	25-35	28-33	28-33	30	30	30	30
487	El Monte - San Gabriel Bl - Dtn LA	Tier 3	50	50	52-60	52-60	40	40	45	45	15	30	60	60
287	El Monte - Arcadia	Tier 3	N/A	N/A	N/A	N/A	40	40	60	60	30	30	60	60
501	Pasadena - North Hollywood via SR-134 Freeway	Tier 3	45	45	45	45	20	30	40	40	20	30	40	40
602	UCLA - Pacific Palisades	Tier 3	30-60	60	60	60	30-60	60	60	60	30	30	45	45
660	Pasadena - Altadena via Fair Oaks Ave	Tier 3	N/A	N/A	N/A	N/A	N/A	N/A	N/A	N/A	20	20	20	20
665	Cal State LA - City Terrace Shuttle	Tier 3	60	60	60	60	60	60	60	60	30	30	40	40
684	Eagle Rock Bl	Tier 3	N/A	N/A	N/A	N/A	N/A	N/A	N/A	N/A	30	30	30	30
686	Allen Ave - Colorado Bl - Del Mar Station	Tier 3	60	60	60	60	60	60	60	60	30	30	60	60
71	LAC USC Med Ctr, Cal State LA	Tier 4	60	60	60	60	N/A	N/A	N/A	N/A	See Line 106	See Line 106	See Line 106	See Line 106
96	Riverside Dr	Tier 4	60	60	60	60	60	60	60	60	See Line 296	See Line 296	See Line 296	See Line 296
296	Riverside Dr	Tier 4	N/A	N/A	N/A	N/A	N/A	N/A	N/A	N/A	60	60	60	60
102	La Tijera Bl, Exposition Bl	Tier 4	30-60	30-60	30-60	30-60	30-60	30-60	30-60	30-60	45	45	45	45
126	Manhattan Beach Bl	Tier 4	N/A	N/A	N/A	N/A	N/A	N/A	N/A	N/A	N/A	N/A	N/A	N/A
128	Alondra Bl	Tier 4	50-65	55	N/A	N/A	60	60	60	60	60	60	60	60
134	Santa Monica - Malibu via PCH	Tier 4	N/A	N/A	N/A	N/A	N/A	N/A	N/A	N/A	45	45	45	45
534	Santa Monica - Malibu via PCH	Tier 4	20-60	30-60	35-55	35-55	20-60	30-60	35-55	35-55	See Line 134	See Line 134	See Line 134	See Line 134
153	E. Burbank Bl	Tier 4	N/A	N/A	N/A	N/A	N/A	N/A	N/A	N/A	60	60	60	60
154	W. Burbank Bl	Tier 4	60	60	N/A	N/A	60	60	N/A	N/A	60	60	60	60
155	Riverside Dr, Magnolia Bl	Tier 4	65	65	65	65	60	60	60	60	40	40	60	60
158	Plummer St, Woodman Ave	Tier 4	60	60	60	60	60	60	60	60	30-60	30-60	60	60
161	Canoga Station - Thousand Oaks	Tier 4	30-60	60	65	65	30-60	60	60	60	30-60	60	60	60
167	Coldwater Cyn Ave, Devonshire St	Tier 4	50-60	50	50-60	50-60	50-60	50	50-60	50-60	60	60	60	60
175	Silver Lake	Tier 4	60	N/A	N/A	N/A	N/A	N/A	N/A	N/A	See Line 182	See Line 182	See Line 182	See Line 182
176	Mission Dr - El Monte - The Shops at Montebello	Tier 4	60	60	N/A	N/A	N/A	N/A	N/A	N/A	See Line 287	See Line 287	N/A	N/A
287	El Monte - The Shops at Montebello	Tier 4	N/A	N/A	N/A	N/A	40	40	60	60	60	60	N/A	N/A
177	JPL - Pasadena	Tier 4	Suspended	N/A	N/A	N/A	30	N/A	N/A	N/A	30	N/A	N/A	N/A
183	Magnolia Bl	Tier 4	55	55	65	65	N/A	N/A	N/A	N/A	See Lines 94, 155	See Lines 94, 155	See Lines 94, 155	See Lines 94, 155
201	Silver Lake Dr - Glendale	Tier 4	65-70	65-70	70	70	N/A	N/A	N/A	N/A	N/A	N/A	N/A	N/A
202	Alameda St	Tier 4	55-60	N/A	N/A	N/A	60	60	N/A	N/A	60	60	N/A	N/A
209	Van Ness Ave, Arlington Ave	Tier 4	60	60	N/A	N/A	60	60	N/A	N/A	60	60	N/A	N/A
211, 215	Prairie Ave, Inglewood Ave	Tier 4	50-55	N/A	N/A	N/A	50-55	N/A	N/A	N/A	40	40	60	60
218	Laurel Canyon	Tier 4	45-52	48	45-55	45-55	55	55	45-55	45-55	60	60	60	60
222	Hollywood Wy, Cahuenga Bl	Tier 4	60	60	60	60	25/50	25/50	50	50	30-60	30-60	60	60
237, 656	Woodley Ave, Cahuenga Bl (incl. Owl)	Tier 4	45-50	50	50-60	50-60	60	60	60	60	60	60	60	60
239	White Oak Ave	Tier 4	60-70	60-70	N/A	N/A	N/A	N/A	N/A	N/A	60	60	60	60
252	Cypress Park - Soto St	Tier 4	40-50	40	40-55	40-55	N/A	N/A	N/A	N/A	See Lines 251, 256	See Lines 251, 256	See Lines 251, 256	See Lines 251, 256
254	Boyle Ave	Tier 4	N/A	N/A	N/A	N/A	N/A	N/A	N/A	N/A	N/A	N/A	N/A	N/A
256	Eastern Ave - Pasadena	Tier 4	60	60	60	60	60	60	60	60	See Line 182	See Line 182	See Line 182	See Line 182

Line(s)	Corridor	Service Tier	Dec 2020				June 2021				NextGen			
			Weekday Peak	Weekday Midday	Saturday Daytime	Sunday Daytime	Weekday Peak	Weekday Midday	Saturday Daytime	Sunday Daytime	Weekday Peak	Weekday Midday	Saturday Daytime	Sunday Daytime
256A	Pasadena - Highland Park	Tier 4	N/A	N/A	N/A	N/A	N/A	N/A	N/A	N/A	40	40	40	40
256C	Eastern Ave Commerce	Tier 4	N/A	N/A	N/A	N/A	N/A	N/A	N/A	N/A	40	40	40	40
258	Altadena - Paramount	Tier 4	60	60	N/A	N/A	60	60	N/A	N/A	40	40	60	60
264	City of Hope - Altadena	Tier 4	60	60	60	60	N/A	N/A	N/A	N/A	N/A	N/A	N/A	N/A
265	Paramount Bl	Tier 4	60	60	60	60	60	60	60	60	40	40	60	60
344	Hawthorne Bl - Palos Verdes	Tier 4	30-60	30-60	60	60	30-60	30-60	60	60	30	60	60	60
442	Manchester Ave Express	Tier 4	N/A	N/A	N/A	N/A	N/A	N/A	N/A	N/A	N/A	N/A	N/A	N/A
489	San Marino - Rosemead Bl - Dtn LA	Tier 4	50-60	N/A	N/A	N/A	40	N/A	N/A	N/A	20	N/A	N/A	N/A
550	San Pedro - Harbor Gateway - USC	Tier 4	60	60	60	60	60	60	60	60	30	N/A	N/A	N/A
577	El Monte Station - Long Beach VA Med Ctr	Tier 4	55-70	60	N/A	N/A	30	45	N/A	N/A	30	45	N/A	N/A
607	Windsor Hills - Inglewood	Tier 4	N/A	N/A	N/A	N/A	N/A	N/A	N/A	N/A	N/A	N/A	N/A	N/A
611	Huntington Park Shuttle	Tier 4	60	60	60	60	60	60	60	60	N/A	N/A	N/A	N/A
612	South Gate Shuttle	Tier 4	N/A	N/A	N/A	N/A	N/A	N/A	N/A	N/A	N/A	N/A	N/A	N/A
621	Norwalk Station - Whittwood Mall	Tier 4	N/A	N/A	N/A	N/A	N/A	N/A	N/A	N/A	60	60	60	60
625	LAX C Line (Green) Shuttle	Tier 4	N/A	N/A	N/A	N/A	N/A	N/A	N/A	N/A	N/A	N/A	N/A	N/A
645	Valley Circle Mulholland Dr	Tier 4	N/A	N/A	N/A	N/A	N/A	N/A	N/A	N/A	60	60	60	60
685	Glendale College - Glassell Park	Tier 4	60	60	N/A	N/A	N/A	N/A	N/A	N/A	N/A	N/A	N/A	N/A
687	Los Robles Ave - Colorado Bl - Del Mar Station	Tier 4	60	60	60	60	N/A	N/A	N/A	N/A	N/A	N/A	N/A	N/A

ITEM 23

Motion 10.1 Update FY21 Operations Recovery Plan

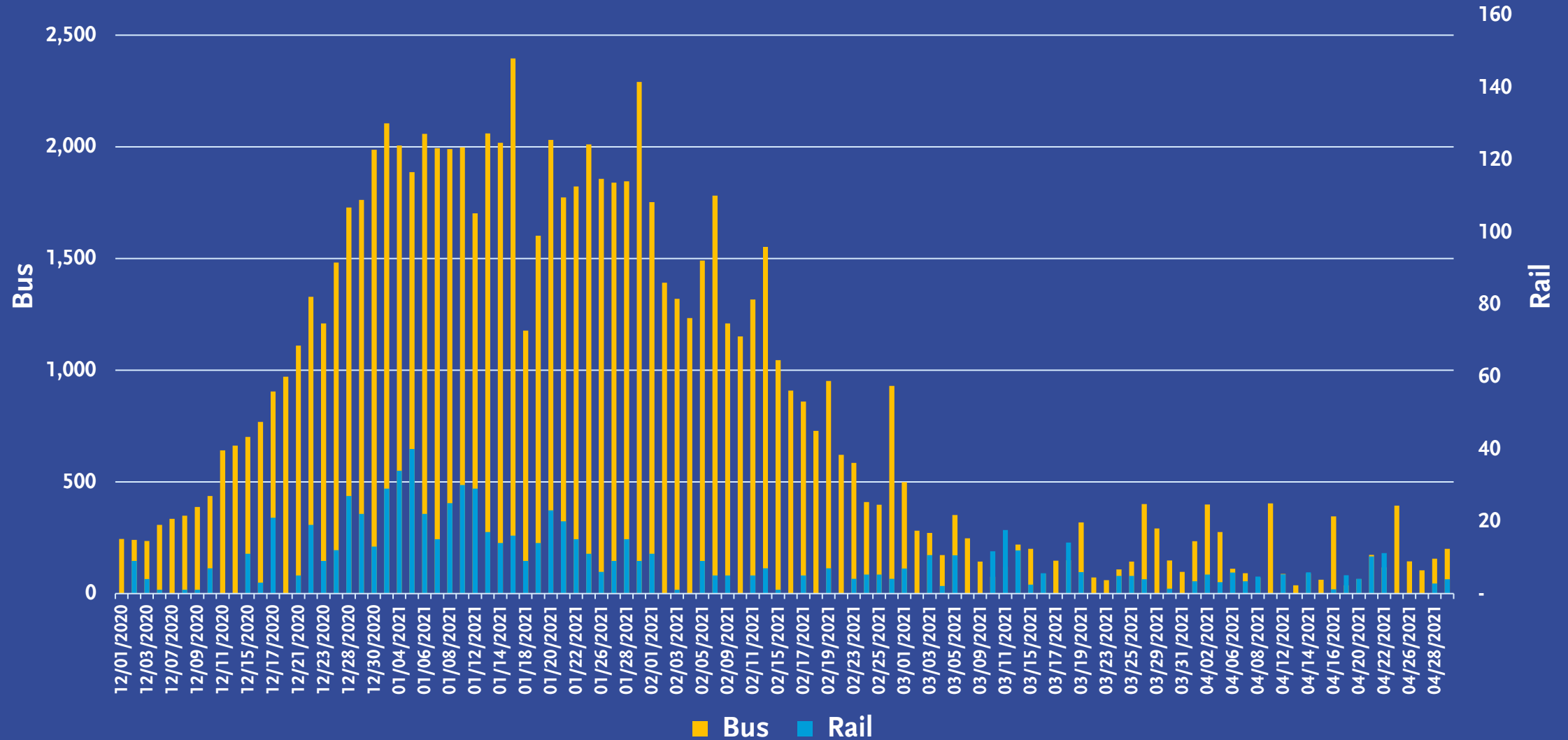


Passenger Loads

	Target	Status
Passenger Load	<ul style="list-style-type: none">98% of weekly trips should not exceed an average of 75% of seated capacity.	<ul style="list-style-type: none">Weekdays: average 1.8% or 196 trips (range 1.7% to 2.0%) so on average meets the targetSaturdays: average 5.3% or 367 trips (range 4.9% to 5.7%)Sundays: average 2.8% or 183 trips (range 2.5% to 3.2%)

An extra 47 weekday, 86 Saturday, and 48 Sunday trips were added to high demand lines starting April 12 to accommodate heavier passenger loads.

Cancelled Work Hours



Service Changes

Dec 2020
(5.6M RSH)

- Focus changes in Westside/Central, South Bay, Gateway Cities
- Consolidated 8 Metro Rapid with Local lines
- Implement Metro Micro in LAX/Inglewood, Watts/Willowbrook and reduce underlying fixed route bus service

June 2021
(6.5M RSH)

- Focus changes in San Fernando Valley and San Gabriel Valley
- Consolidated 8 more Metro Rapid with Local lines
- Implement Metro Micro in Altadena/Pasadena/Sierra Madre, Highland Park/Eagle Rock/Glendale and reduce underlying fixed route bus service

**Aug/Sept
2021**
(7.0M RSH)

- Implement Metro Micro in North San Fernando Valley and UCLA and reduce underlying fixed route bus service
- +880K annualized revenue service hours

Dec 2021
(7.0M RSH)

- Various modifications to around 26 final lines
- Consolidated 2 more Metro Rapid with Local lines
- +500K annualized revenue service hours (Sept 2021)