



**Board Report**

---

**File #:** 2022-0602, **File Type:** Board Correspondence

**Agenda Number:**

---

**Attached is the official record distributed to the board.**

**JUNE 22, 2022**

**TO: BOARD OF DIRECTORS**

**THROUGH: STEPHANIE WIGGINS  
CHIEF EXECUTIVE OFFICER**

**FROM: KEANDRA CYLEAR DODDS  
EXECUTIVE OFFICER, EQUITY AND RACE**

**SUBJECT: 2022 EQUITY FOCUS COMMUNITIES UPDATE REVISION**

**ISSUE**

The 2022 Equity Focus Communities (EFC) update received at the May 2022 Executive Management Committee meeting requires a revision to account for a minor miscalculation in the Board-received update.

**BACKGROUND**

During the May 2022 Executive Management Committee (EMC) meeting, the 2022 Equity Focus Communities (EFC) update was received (File # 2022-0275), which included updating Los Angeles County demographic data, implementing an index methodology, and setting a three-year update cycle going forward.

**DISCUSSION**

During the process of updating the EFC with the most recent data available (US Census, 2020), the project consultant calculated the concentration of the EFC sociodemographic criteria (income, race/ethnicity, zero cars) per census tract count, or raw number of residents and/or households. This analysis should have been calculated by census tract rate, or the percentage of residents and/or households within each census tract that met the EFC sociodemographic criteria. Census tract rates allow for a comparison of needs.

The corrected analysis includes an overall increase of 43 census tracts designated as EFCs. This increase is a result of 122 census tracts that were added and 79 census tracts that were removed from the EFC designation from the incorrect analysis. The corrected EFC maps are shown in

Appendix A.

The correction also updates the analysis of alignment of the 2022 EFC Update with the original 2019 EFC map (see Appendix A). While some census tract boundaries were changed in 2020, the project consultant estimates that approximately 91.4% of census tracts identified in the original 2019 EFC map are covered in the 2022 EFC corrected update.

**NEXT STEPS**

The corrected revision to the 2022 EFC Update will be available online to staff and the public in late June. Staff are still expected to use the 2022 EFC Map in any new or updated equity analysis starting July 1, 2022.



**Metro**

Los Angeles County  
Metropolitan Transportation Authority

One Gateway Plaza  
Los Angeles, CA 90012-2952

213.922.2000 Tel  
metro.net

**JUNE 22, 2022**

**TO: BOARD OF DIRECTORS**

**THROUGH: STEPHANIE N. WIGGINS** *SNW*  
**CHIEF EXECUTIVE OFFICER**

**FROM: KEANDRA CYLEAR DODDS** *KCD*  
**EXECUTIVE OFFICER, EQUITY AND RACE**

**SUBJECT: 2022 EQUITY FOCUS COMMUNITIES UPDATE REVISION**

### **ISSUE**

The 2022 Equity Focus Communities (EFC) update received at the May 2022 Executive Management Committee meeting requires a revision to account for a minor miscalculation in the Board-received update.

### **BACKGROUND**

During the May 2022 Executive Management Committee (EMC) meeting, the 2022 Equity Focus Communities (EFC) update was received ([File # 2022-0275](#)), which included updating Los Angeles County demographic data, implementing an index methodology, and setting a three-year update cycle going forward.

### **DISCUSSION**

During the process of updating the EFC with the most recent data available (US Census, 2020), the project consultant calculated the concentration of the EFC sociodemographic criteria (income, race/ethnicity, zero cars) per census tract **count**, or raw number of residents and/or households. This analysis should have been calculated by census tract **rate**, or the percentage of residents and/or households within each census tract that met the EFC sociodemographic criteria. Census tract **rates** allow for a comparison of needs.

The corrected analysis includes an overall increase of 43 census tracts designated as EFCs. This increase is a result of 122 census tracts that were added and 79 census tracts that were removed from the EFC designation from the incorrect analysis. The corrected EFC maps are shown in Appendix A.

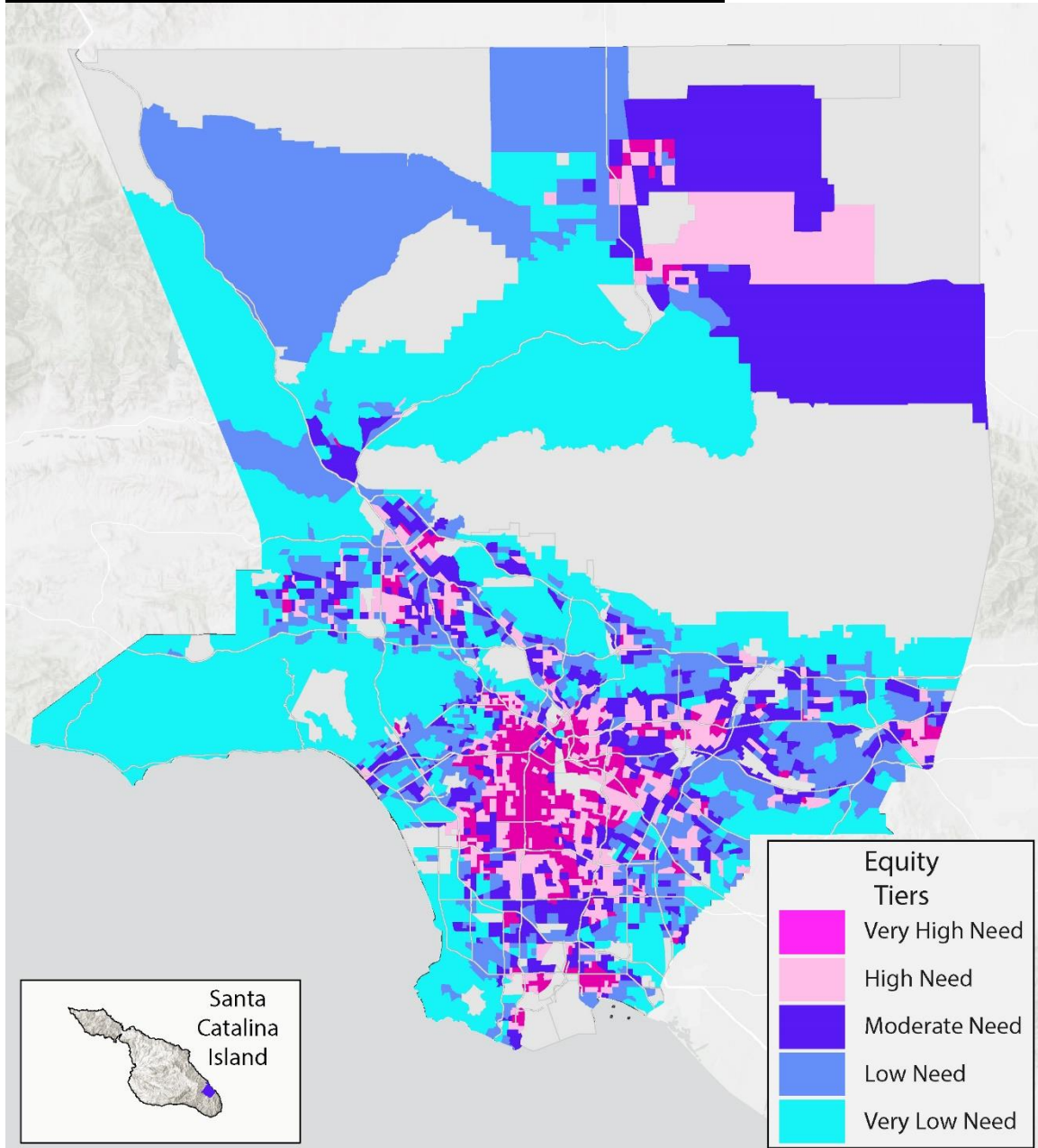
The correction also updates the analysis of alignment of the 2022 EFC Update with the original 2019 EFC map (see Appendix A). While some census tract boundaries were changed in 2020, the project consultant estimates that approximately 91.4% of census tracts identified in the original 2019 EFC map are covered in the 2022 EFC corrected update.

**NEXT STEPS**

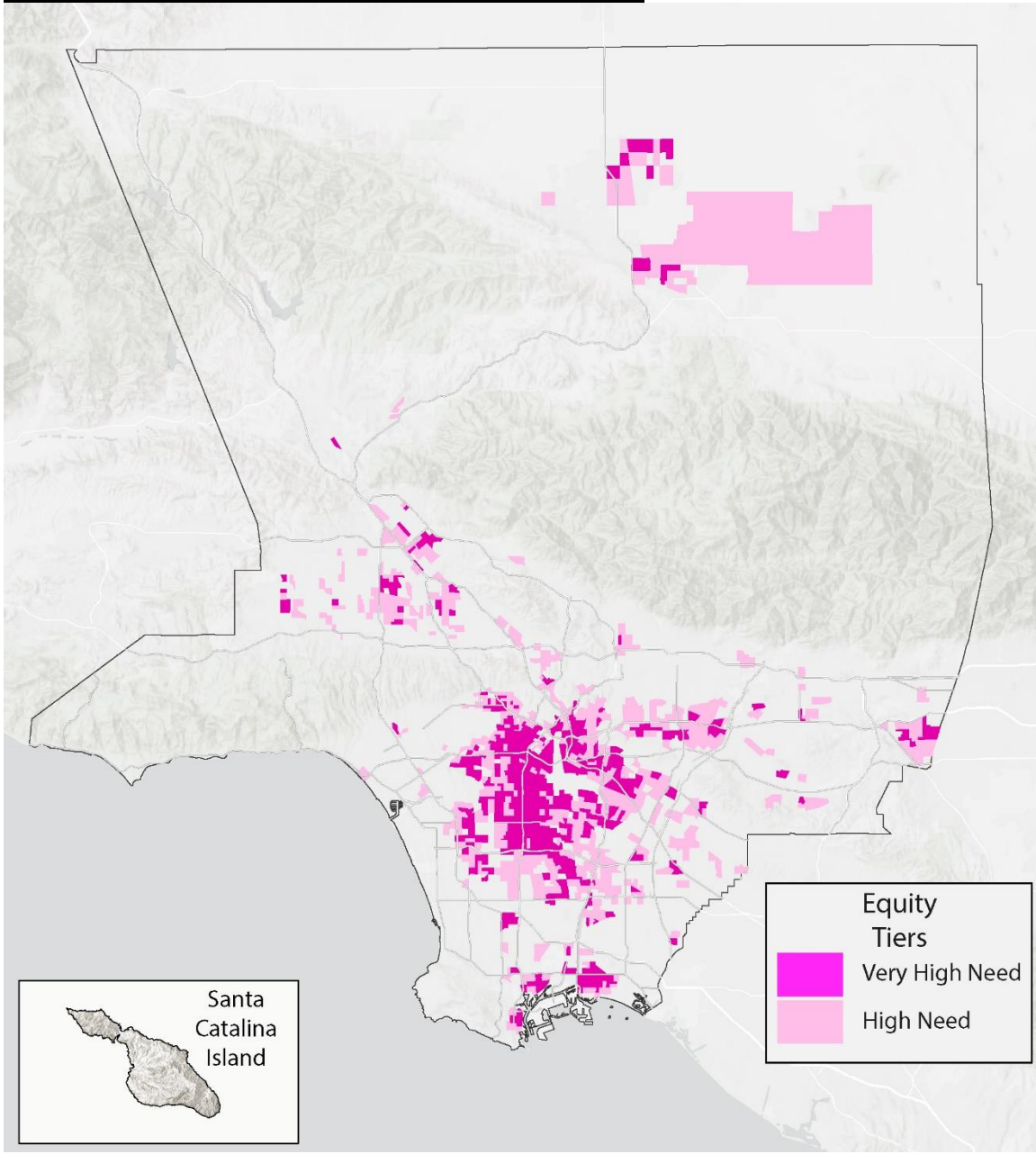
The corrected revision to the 2022 EFC Update will be available online to staff and the public in late June. Staff are still expected to use the 2022 EFC Map in any new or updated equity analysis starting July 1, 2022.

# Appendix A – 2022 Equity Focus Communities Map (corrected June 2022)

## 2022 Equity Focus Communities Index Map (June 2022)



2022 Equity Focus Communities Map (June 2022)



2022 EFC Map compared to 2019 Original EFC Map

