



Metro

Board Report

Los Angeles County
Metropolitan Transportation
Authority
One Gateway Plaza
3rd Floor Board Room
Los Angeles, CA

File #: 2022-0794, **File Type:** Oral Report / Presentation

Agenda Number: 4.

**REGULAR BOARD MEETING
DECEMBER 1, 2022**

SUBJECT: REPORT BY THE CHIEF EXECUTIVE OFFICER

RECOMMENDATION

RECEIVE report by the Chief Executive Officer.

Report by the CEO

Item #4



Metro[®]

CHIEF EXECUTIVE OFFICER

December 2022

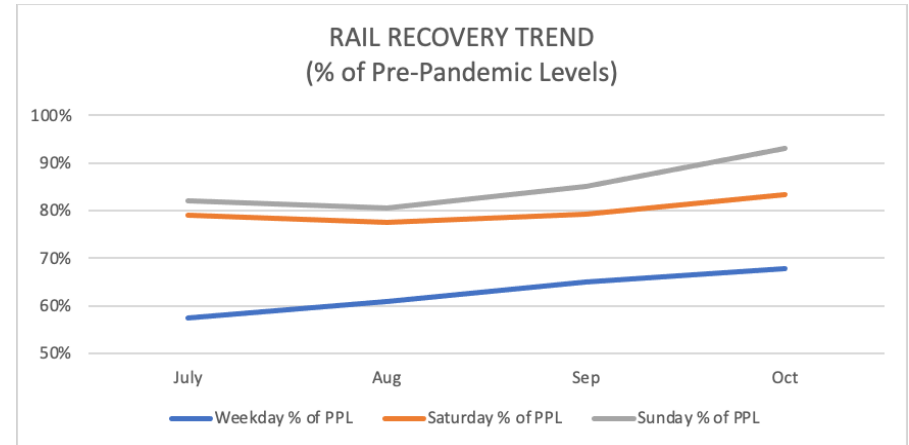
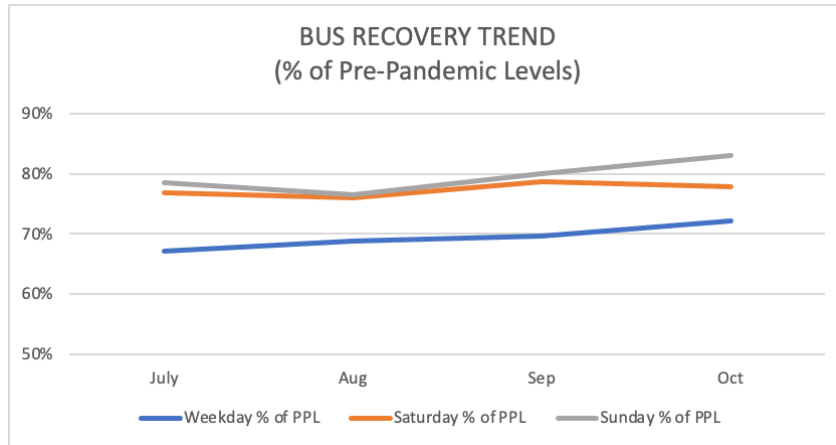
PUTTING PEOPLE FIRST: Transit to Parks Summit



CHIEF EXECUTIVE OFFICER

December 2022

PUTTING PEOPLE FIRST: Ridership & Reliability Update



Total October 2022 Ridership: 23,759,202 (71% of Pre-Pandemic Level)

Bus Average Daily Ridership

Weekday	687,314	72% of PPL
Saturday	456,270	78% of PPL
Sunday	376,312	83% of PPL

Rail Average Daily Ridership

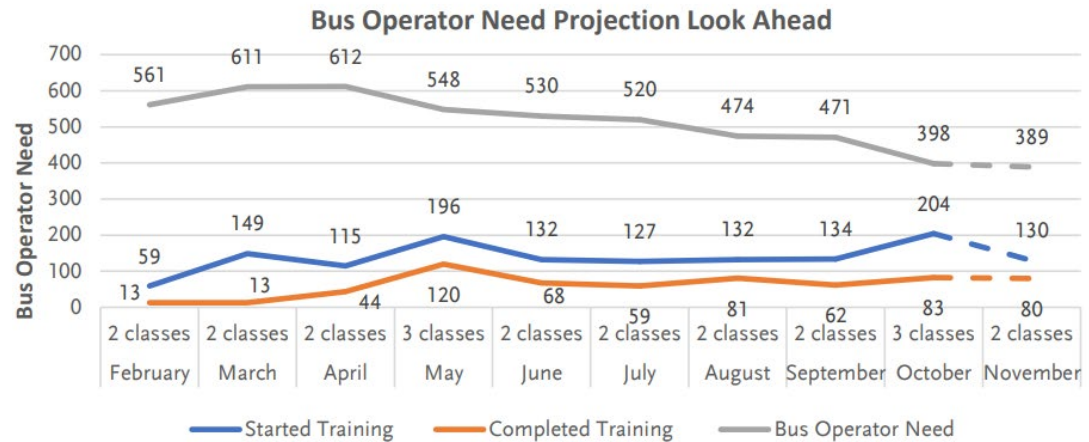
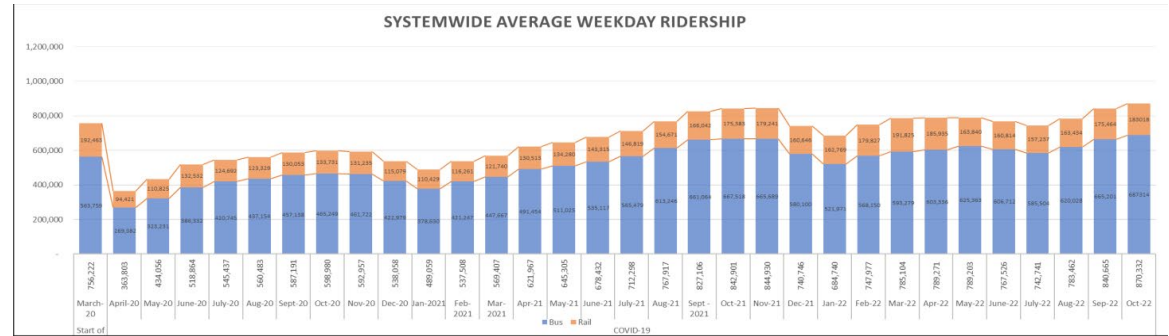
Weekday	183,018	68% of PPL
Saturday	137,777	83% of PPL
Sunday	126,087	93% of PPL



CHIEF EXECUTIVE OFFICER

December 2022

Year in Review: NextGen Service Restoration!



Metro

CHIEF EXECUTIVE OFFICER

December 2022

Year in Review: Metro Ambassador Update

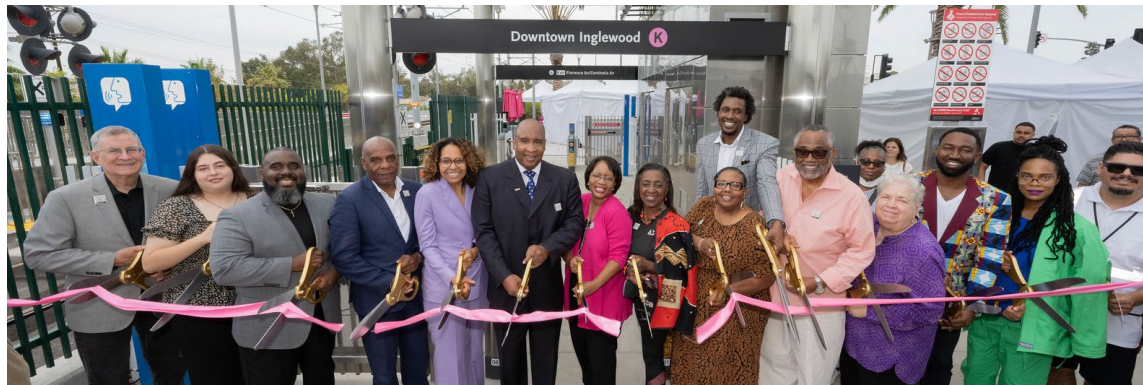


Metro®

CHIEF EXECUTIVE OFFICER

December 2022

Year in Review: The K Line Opening!



Metro

CHIEF EXECUTIVE OFFICER

December 2022

Year in Review: Better & More Accessible Transit!



Metro®

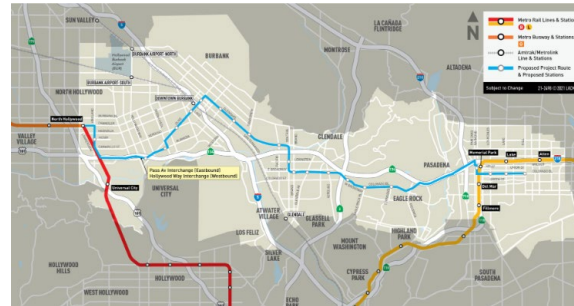
CHIEF EXECUTIVE OFFICER

December 2022

Year In Review: Progress on Measure M!



West Santa Ana Branch LPA



NoHo-Pasadena BRT



Long Beach-East LA
Corridor



I-405 Comprehensive
Multimodal Plan



Metro

CHIEF EXECUTIVE OFFICER

December 2022

Year in Review: Groundbreaking Projects!

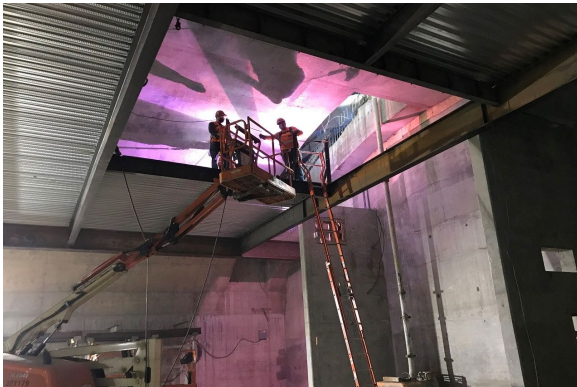


Metro

CHIEF EXECUTIVE OFFICER

December 2022

Year in Review: Construction Progress!



Metro®

CHIEF EXECUTIVE OFFICER

December 2022

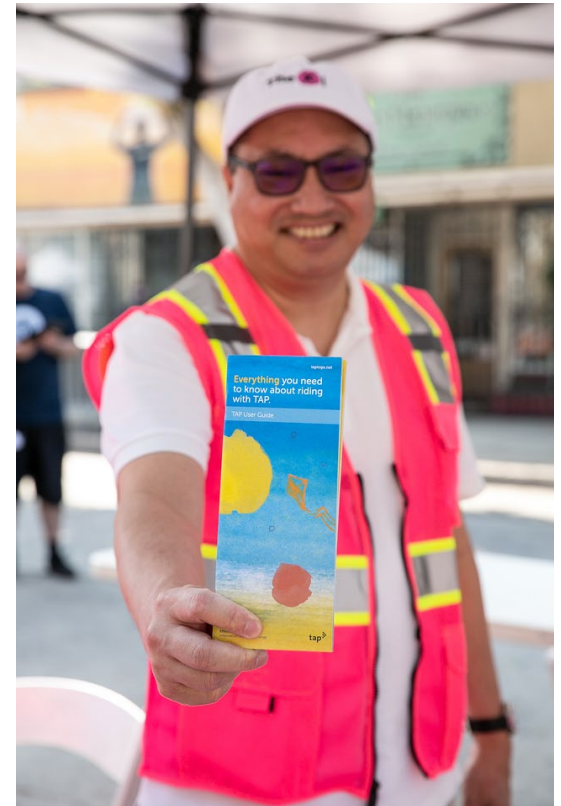
Year in Review: State and Federal Grants!



CHIEF EXECUTIVE OFFICER

December 2022

The Metro Family!



CHIEF EXECUTIVE OFFICER

December 2022

Thank you!



CHIEF EXECUTIVE OFFICER

December 2022