



**Board Report**

**File #:** 2024-1091, **File Type:** Oral Report / Presentation

**Agenda Number:** 14.

**CONSTRUCTION COMMITTEE  
JANUARY 15, 2025**

**SUBJECT: CALTRANS QUARTERLY CONSTRUCTION PROJECTS UPDATE**

**ACTION: RECEIVE ORAL REPORT**

**RECOMMENDATION**

RECEIVE the quarterly oral report on the status of the Caltrans construction projects.

**ISSUE**

Caltrans is a Metro funding partner and the lead agency on a few highway projects that are under construction in Los Angeles County. These projects include, but are not limited to, safety, mobility and operational improvements on freeways and state highways that are Measure M-funded.

At the request of Directors Horvath and Hahn, this report includes an update on the status of the Pacific Coast Highway Safety Enhancement Project and the I-105 at Studebaker Safety Enhancement Project, respectively.

**EQUITY PLATFORM**

Projects administered by Caltrans have federal aid and Disadvantaged Business Enterprise (DBE) commitment goals based on the contract bid amount for federal aid projects.

The I-405 Crenshaw Auxiliary Lane Project’s DBE goal of 14% has been achieved. The I-405 Crenshaw Auxiliary Lane Project has been open to traffic for some time, only plant establishment construction activities remain.

The SR-71 South Segment Project did not have federal participation, so a DBE goal was not required, however, the Contractor achieved 0.45% in DBE participation. The SR-71 South Segment Project is under construction and expected to be completed and open to traffic by October 2025.

The Pacific Coast Highway (PCH) Safety Enhancement Project and the I-105 at Studebaker Safety Enhancement Project were emergency contracts administered by Caltrans to address unsafe conditions. The proposed safety and operational improvements for PCH Safety Enhancement Project are intended to reduce speeds and collision rates along the corridor, enhance safety through increased surveillance, and provide better and safer access for those who choose to walk, roll, cycle

or drive.

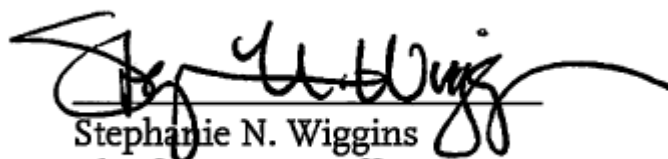
The I-105 at Studebaker Safety Enhancement Project in Norwalk is located within equity focused communities and the SR71 South Segment Project is in Pomona which is reported to be a disadvantaged community. Both cities have communities that stand to benefit from the proposed improvements that address operational deficiencies and unsafe conditions.

As the lead agency, Caltrans is responsible for all the project development phases including procurement, environmental process, outreach, final design, and construction. Caltrans, in coordination with the local jurisdictions, determined community engagement processes specific to the type of transportation improvement. This coordination is aligned with the Caltrans Race & Equity Action Plan to address systemic racial inequities that exist within the transportation sector.

Throughout the construction phase for the projects noted, outreach efforts consisted of sending press releases to cities, communities, elected officials, and multiple media outlets (talk radio, cable news) and social media platforms (X/Twitter, Instagram) that cover Los Angeles and Ventura Counties. Specific notices regarding construction work and/or detours were made available in multiple languages (English, Spanish, Chinese, etc.) based on the affected communities. In addition, Caltrans uses fixed and portable changeable message signs to report lane, ramp and/or local road closures; and QuikMap, a digital application, to provide real-time traffic information (including road closures) for motorists traversing to and through project areas impacted by construction activities. Caltrans also provides updates that are posted on the Caltrans and Metro websites about active construction sites. Every effort is made to avoid, minimize, and/or mitigate construction impacts to communities by providing advance notices to the public when there are freeway and/or ramp lane closures for construction work and/or planned detours. Any unintended equity impacts that may arise will be responded to on a case-by-case basis by the appropriate project partners.

Prepared by: John Yang, Deputy District Director, Caltrans District 7, (213) 761-3255  
Michelle E. Smith, Executive Officer, Complete Streets & Highways,  
(213) 547-4368  
Avital Barnea, Senior Executive Officer, Multimodal Integrated Planning,  
(213) 547-4317

Reviewed by: Ray Sosa, Chief Planning Officer, (213) 547-4274



Stephanie N. Wiggins  
Chief Executive Officer









# Caltrans Projects Status Report

January 2025

**Construction Committee**  
Los Angeles County Metropolitan Transportation Authority



# Project Budget & Schedule Status Summary Chart

		Cost Performance		Schedule Performance		
Project	DBE Goal	Variance Approved LOP	Variance Revised Budget	Variance Original	Variance Revised Schedule	Comments
1. SR-71 South Segment	N/A					Contract progress: 70% complete. Working with Contractor for schedule recovery along with resolving outstanding claims. RW131 soil nail wall construction is completed. NB-71 outside lanes open to traffic. Rio Rancho on-ramp to NB-71 is realigned and opened to traffic. Contractor currently working in Stage 2 median drainage crossover and grading for paving concrete roadway. Currently structure work on SW221A and RW138.
2. I-405 Crenshaw Aux Lane	14%					Contract progress: 97% complete. Contractor is working on planting throughout the project and is in plant establishment



Metro

January 2025 Construction Committee

Los Angeles County Metropolitan Transportation Authority



On target





Possible problem (5-10% variance)





Significant Impact (over 10% variance)



# SR-71 South Segment

BUDGET	FA	Approved LOP*	Previous Period	Current Forecast
	\$124.1M	\$124.1M	\$124.1M	\$124.1M
Variance from Approved LOP:			\$0 (0%)	\$0 (0%) 
Variance from Revised Budget:				\$0 

SCHEDULE	Original	Approved Rebaseline	Previous Period	Current Forecast
	Spring 2024	N/A	Spring 2024	Summer 2025*
Variance from Original:			0 WD (0%)	248 WD (26%)* 
Variance from Revised Schedule:				N/A 

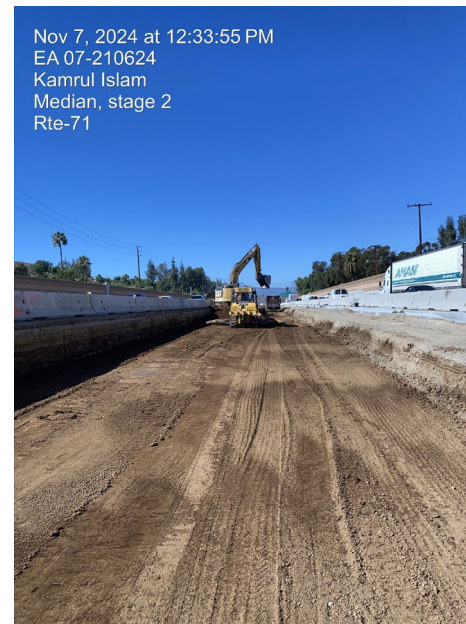
\*Pending from time extension approval based on claim resolution

# SR-71 South Segment

- Contract progress: 70% complete.
- RW 131 soil nail retaining wall is completed.
- Drainage System (DS) 16-1 Reinforced Concrete Box (RCB) is completed. Currently backfilling and removing shoring system.
- NB 71 outside lanes and Rio Rancho on-ramp is complete and opened to traffic on September 22, 2024. (Stage 1)
- Currently in Stage 2 median work. Lateral drainage tie-ins, roadway excavation and grading underway. Concurrently, SB-71 Stage 3 grading and base had started at the north end of work limits.
- Contractor is still preparing claim backup documentation. Once received, Department will verify and resolve all current potential claims on the project.



NB-71, completed stage 1 roadway.



Stage 2 Median, roadway excavation and grading.





**Metro**



Los Angeles County Metropolitan Transportation Authority

January 2025 Construction Committee



# I-405 Crenshaw Aux Lane

BUDGET	FA	Approved LOP	Previous Period	Current Forecast
	\$62.0M	\$62.0M	\$62.0M	\$62.0M
Variance from Approved LOP:			\$0 (0%)	\$0 (0%) 
Variance from Revised Budget:				\$0 

SCHEDULE	Original	Approved Rebaseline	Previous Period	Current Forecast
	Spring 2024	N/A	Spring 2024	Summer 2024
Variance from Original:			0 WD (0%)	65 WD (11.2%) 
Variance from Revised Schedule:				0 WD 

# I-405 Crenshaw Aux Lane

- Contract progress: 97% complete.
- The new northbound Crenshaw Boulevard ramp to southbound I-405 was opened to traffic in May 2024.
- The new northbound Crenshaw Boulevard ramp to northbound I-405 was opened to traffic in June 2024.
- The Contractor started the plant establishment period on July 22, 2024.
- The Contractor has met the DBE goal.
- There are no major issues. The Project will be accepted on May 30, 2025.



North side of Crenshaw Blvd UC (Looking South) showing Crenshaw Blvd improvements/auxiliary lane for new NB loop ramp.



South side of Crenshaw Blvd UC (Looking North) showing Crenshaw Blvd improvements/auxiliary lane for realigned SB on ramp and new NB Crenshaw Blvd to SB 405 on ramp



# Pacific Coast Highway (PCH) Safety Enhancement Project\*

## Project Limit

- State Route 1 from McClure tunnel to LA/Ventura County line

## Schedule

- December 2023 to March 2025

## Cost

- \$4,255,000

## Scope

- Striping improvement
- QWICK KURB for better visibility
- Radar feedback signs
- Pedestrian countdown signals
- Sign Installations

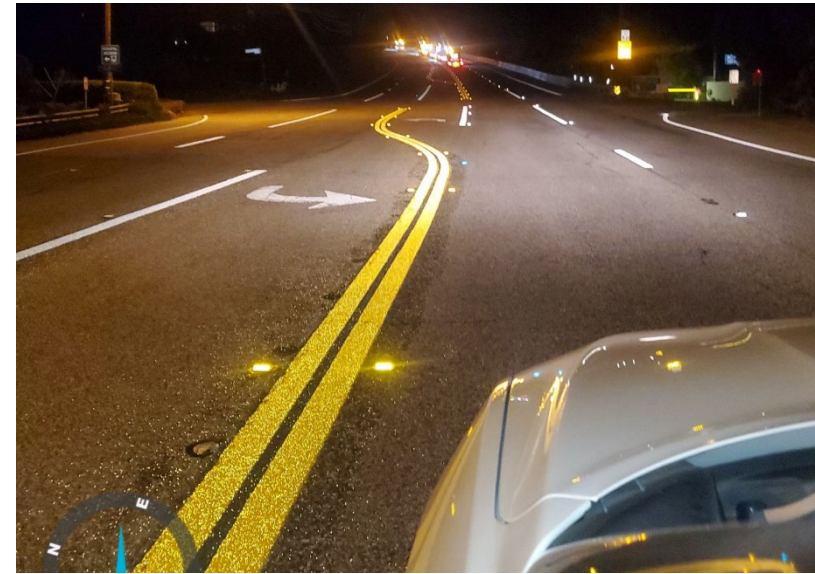
\*Caltrans Emergency Contract



# PCH Safety Enhancement Project

## STRIPING:

- Permanent thermoplastic striping for lane delineation completed.
- Completed thermoplastic pavement markings (installation of crosswalks, speed limit demarcations on the pavement and speed reduction bars).



## QWICK KURB:

- All Qwick Kurb installation has been completed per plans. Per request from City of Malibu, some locations were replaced with shorter reflective markers to enhance motorist visibility. All work completed.



# PCH Safety Enhancement Project

## RADAR SPEED FEEDBACK SIGNS:

- Temporary radar speed feedback signs installed at 10 locations as of December 2023. The permanent poles are ordered and waiting for delivery.

## PEDESTRIAN COUNTDOWN SIGNALS:

- Installation is completed for all 44 signals.

## SIGNS:

- Caltrans team is continuously taking inventory of all signs that need to be removed or replaced to improve visibility. The removal and replacement are ongoing.



# I-105 at Studebaker Safety Enhancement Project\*\*

## Project Limit

- Interstate Route 105 ramp to Studebaker

## Schedule

- February 2024 to August 2024
- Contract was completed and accepted on 08/06/2024

## Cost

- \$460,000

## Scope

- Rumble strips
- Flashing beacon
- LED flashing sign panels
- Reflective back plates

\*\*Caltrans Minor Contract



# I-105 Safety Enhancement Project

## RUMBLE STRIPS:

- Completed: Installed four sets of Rumble Strips on exit ramp ahead of Studebaker intersection



## CROSSWALK MARKINGS:

- Completed: Installed Continental Crosswalk Marking



# I-105 Safety Enhancement Project

## FLASHING BEACON SIGN:

- Completed: Installed flashing beacons on ground-mounted “END FREEWAY ½ MI” sign

## REFLECTIVE BACK PLATES:

- Completed: Installed reflective backplates on the traffic signal heads at the intersection of I-105 and Studebaker Rd

## LED FLASHING SIGN PANELS:

- Completed: Installed LED flashing signs at the intersection of I-105 and Studebaker Rd

## Sentry Water-Cable Barrier:

- Completed: Installed two layers of Sentry barriers on October 3, 2024

