



Board Report

File #: 2025-0030, **File Type:** Oral Report / Presentation

Agenda Number: 4.

**REGULAR BOARD MEETING
JANUARY 23, 2025**

SUBJECT: REPORT BY THE CHIEF EXECUTIVE OFFICER

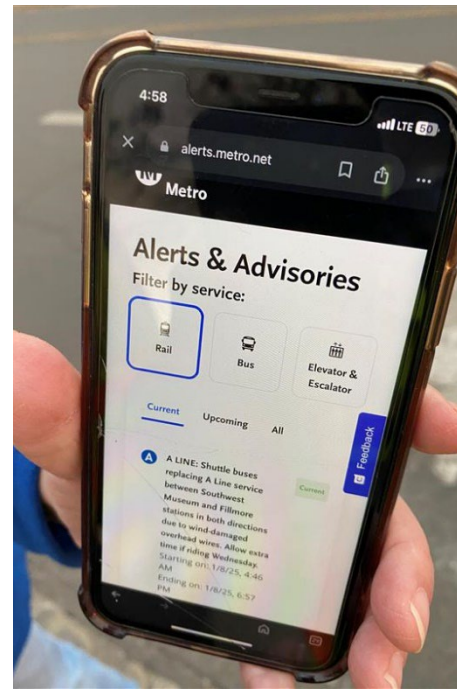
RECOMMENDATION

RECEIVE report by the Chief Executive Officer.

Report by the CEO, Item #4



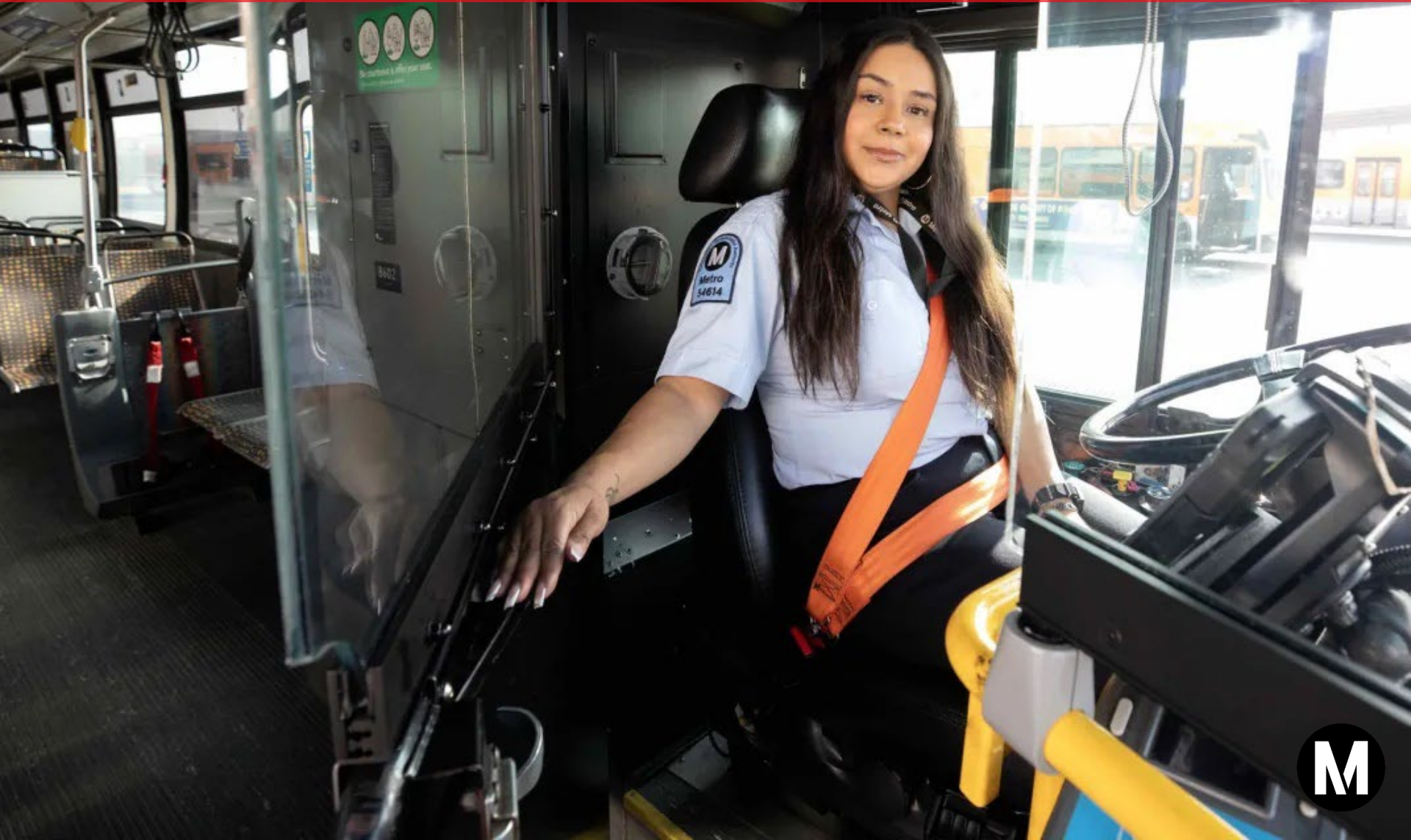
Metro's Wildfire Emergency Response



Motion 36: Expand Eligibility of Reduced Fare Programs



Metro is Now the 1st Transit Agency in the US with Fully-Enclosed Operator Barriers



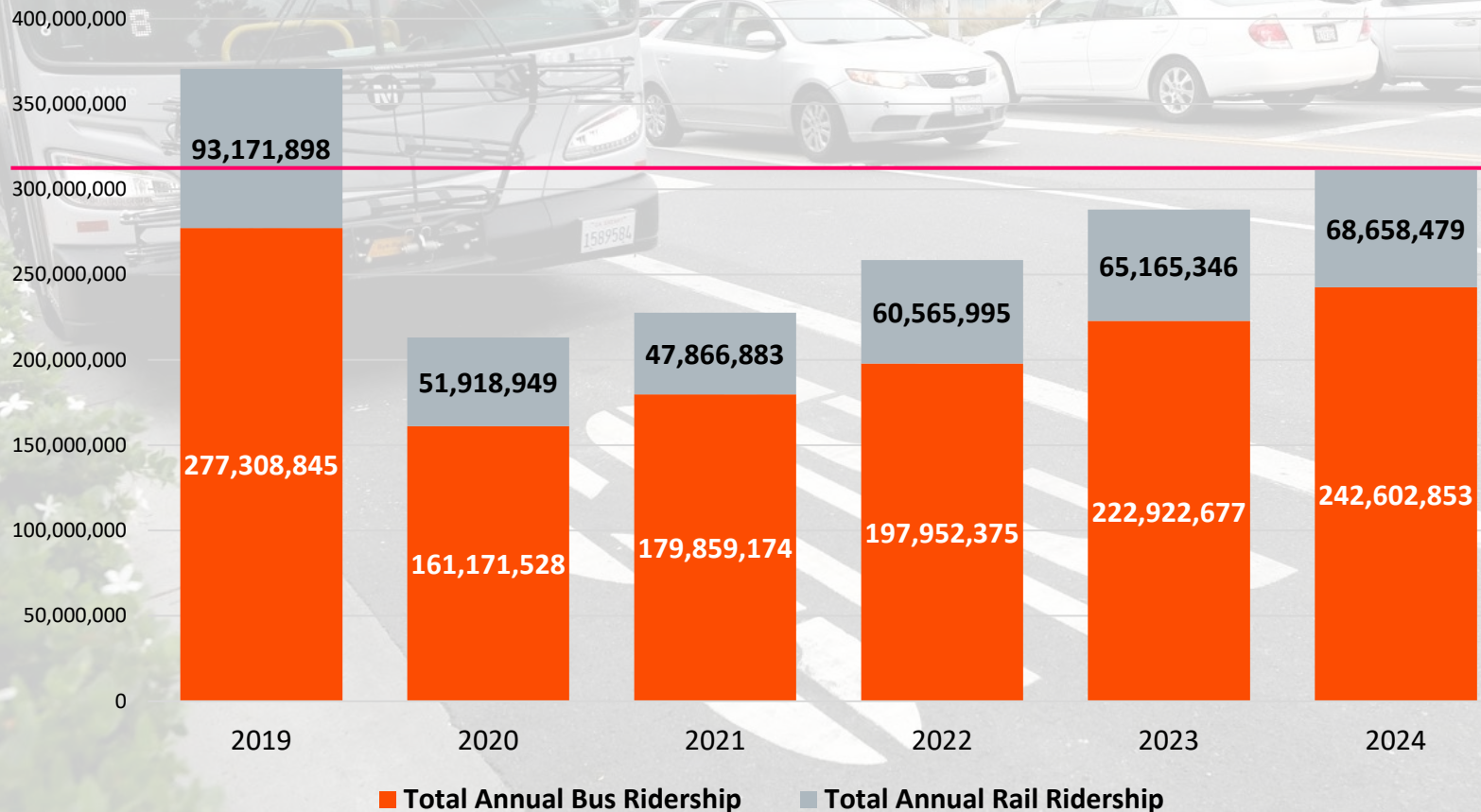
New Trains Begin to Rollout on the D Line!



311 Million Boardings in 2024!

December 2024 marked the 25th straight month of year-over-year ridership gains!

Metro's Annual Ridership



2025 will be another busy year for Metro

MAJOR MILESTONES SET FOR 2025

- LAX/Metro Transit Center Grand Opening
- Emergency Security Operations Center Opening
- Rail to Rail Active Transportation Project Grand Opening
- Foothill A Line Extension Grand Opening
- Bus Priority Lanes on Florence & Vermont
- G Line Improvements Project Major Construction Groundbreaking
- I-105 Express Lanes Phase 1 Groundbreaking
- First TCPD Chief of Police
- Lorena Project Joint Development Grand Opening
- Santa Monica/Vermont Apartments Grand Opening
- TAP-to-Exit Implemented at all End-of-Line Stations & Taller Faregates Installed
- D Line Extension Section 1 Grand Opening
- Multiple Planning & Environmental Milestones
- And much more...

MAKE YOUR VOICE HEARD!

Telephone Town Hall on FY26 Budget

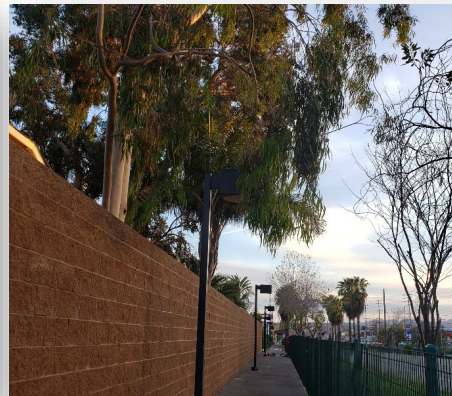
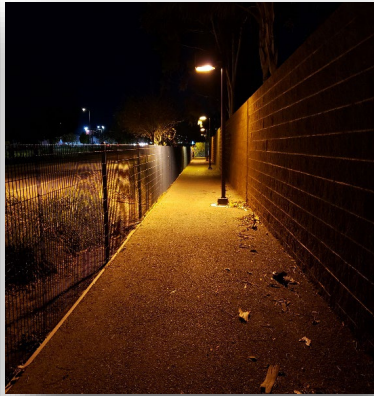
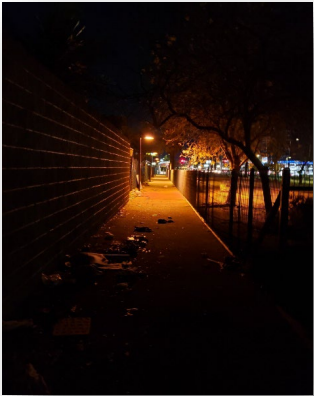
Tuesday, February 4, 2025
6:00 PM – 7:00 PM



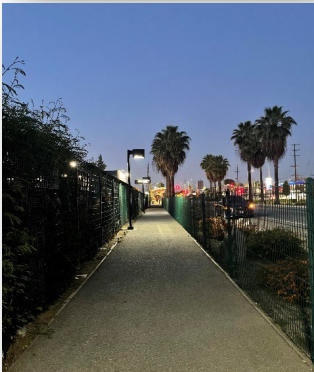
G Line Roscoe Secondary Walkway – Area Map

G Line Roscoe Secondary Walkway – Spring 2023

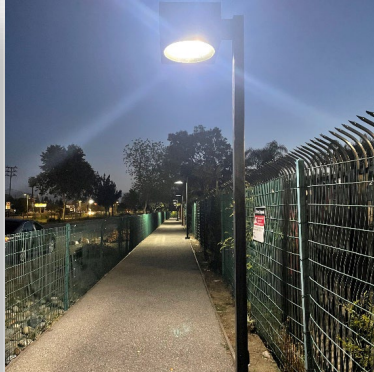
Before



After



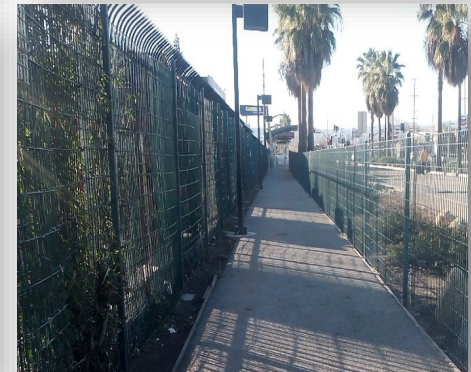
Improved lighting



Improved lighting

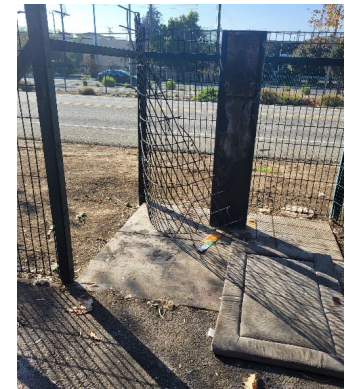
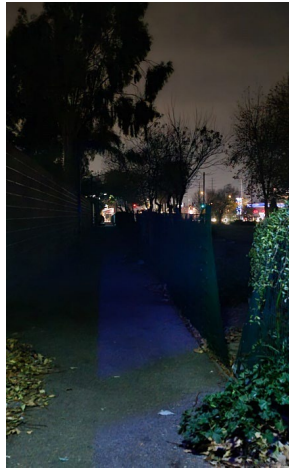
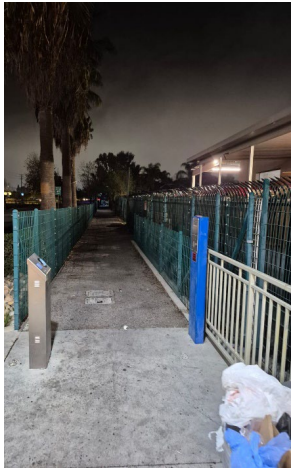


Trimmed branch = better lighting



Increased monthly cleaning efforts

G Line Roscoe Secondary Walkway – January 2025 Conditions



G Line Roscoe Secondary Walkway – Action Items

- 1. Bus FM team to again repair/resecure lighting and CCTV cameras throughout walkway**
 1. Work began 1/21/25

- 2. Homeless Outreach efforts**
 - LA Metro HOME Outreach teams
 - LA Family Housing (LAFH) Outreach teams
 - Connect with CD12 and Mayor’s Office resources

- 3. Conduct Community Outreach re: Secondary Walkway**
 - Safer, alternative bike path exists on other side of busway or via Roscoe and Variel, which has improved natural surveillance

