



## Board Report

File #: 2025-0817, File Type: Program

Agenda Number: 8.

### PLANNING AND PROGRAMMING COMMITTEE OCTOBER 15, 2025

**SUBJECT: MEASURE M MULTI-YEAR SUBREGIONAL PROGRAM UPDATE - WESTSIDE CITIES SUBREGION**

**ACTION: APPROVE RECOMMENDATION**

#### **RECOMMENDATION**

CONSIDER:

- A. APPROVING programming an additional \$5,073,753 within the capacity of Measure M Multi-Year Subregional Program (MSP) - Active Transportation 1<sup>st</sup>/Last Mile Connections Program (Expenditure Line 51), as shown in Attachment A; and
- B. AUTHORIZING the Chief Executive Officer (CEO) or their designee to negotiate and execute all necessary agreements for approved projects.

#### **ISSUE**

Measure M MSPs are included in the Measure M Expenditure Plan, which is an attachment to the Measure M Ordinance. All MSP funds in this program are limited to capital projects under the Active Transportation 1<sup>st</sup>/Last Mile Connections Program. This program update allows the Westside Cities Subregion and implementing agencies to approve new eligible projects for funding and revise the scope of work, schedule, and amend the project budget for previously funded projects. Funds are programmed through Fiscal Year (FY) 2028-29. The Board's approval is required to program additional funds and acknowledge the updated project list (Attachment A), which serves as the basis for Metro entering into agreements and/or amendments with the respective implementing agencies.

#### **BACKGROUND**

Based on the amount provided in the Measure M Expenditure Plan, a total amount of \$75.01 million was forecasted to be available for programming for the subregion for FY 2017-18 to FY 2028-29. In prior actions, the Board approved programming \$49.6 million in support of 21 projects, including two projects in the MSP - Subregional Equity Program, shown in Attachment B. Therefore, \$25.41 million is available to the Subregion for programming as part of this annual update. To date, \$3.34 million (7% of programmed funds) has been expended. One project has been completed and is in the close-out audit process. Many of the remaining projects were awarded funds more recently in FY23 or

after. Staff will continue working with the implementing agencies to advance the delivery of all projects.

In line with the Metro Board adopted Measure M Guidelines, agencies requesting funds must provide documentation demonstrating community support, project need, and multimodal transportation benefits that enhance safety, support traffic mobility, economic vitality, and enable a safer and well-maintained transportation system. Cities and Councils of Governments lead and prioritize all proposed transportation improvements, including procurement, the environmental process, outreach, final design, and construction.

## **DISCUSSION**

The jurisdictional requests for updates presented herein were proposed by the cities and approved/forwarded by the Subregion. Metro staff worked closely with the Westside Cities Council of Governments (WCCOG), its consultants, and implementing agencies to review and confirm the eligibility of proposed project updates, including changes to the scope of work/schedule and/or funding requests, as applicable.

During staff review, Metro required a detailed project scope of work to confirm project eligibility and establish the program nexus including but not limited to project location and limits, length, elements, phase(s), total estimated expenses, funding requested, and schedules. Final approval of funds for the projects shall be contingent upon the implementing agency demonstrating the eligibility of each project, as required in the Measure M Master Guidelines. Staff collected project details to enable the timely execution of project Funding Agreements for approved projects. All Measure M MSPs must be expended within three years from the fiscal year in which the funds are programmed, according to the Guidelines Timely Use of Funds Lapsing Policy. Staff will continue working with the implementing agencies to encourage timely completion of the projects with special attention on supporting project delivery in time for the 2028 Olympic and Paralympic Games, when applicable. Although the proposed projects in this update will not be completed by 2028, five other previously approved projects are anticipated to be completed by the 2028 Games. Additionally, all projects are subject to a close-out audit after completion, according to the Guidelines.

### Active Transportation 1<sup>st</sup>/Last Mile Connections Program (Expenditure Line 51)

This update includes funding adjustments to three existing and one new project as follows:

#### *Beverly Hills*

Program \$1,600,000 as follows: \$800,000 in Fiscal Year (FY) 28 and \$800,000 in FY 29 for MM4801.21 - D Line Extension FLM - Electric Trolley Service. This new project will improve access to the forthcoming Wilshire/La Cienega and Wilshire/Rodeo D Line subway stations by connecting citywide civic centers, employment corridors, and medical facilities with an electronic trolley service. This project will likely decrease Vehicle Miles Traveled (VMT). The funds will be used for the project's capital purchases. The City of Beverly Hills has one other project funded by this program in FY25. The FLM project is about to have an awarded construction contract, initiate construction, and be completed within eight months

### *Culver City*

- Program an additional \$1,160,121 for MM4801.17 - Sepulveda Corridor Mobility Lane Project. The funds are programmed as follows: \$798,364 in FY 25 and \$1,160,121 in FY 2027-28 for a revised total grant of \$1,958,485. This existing project will involve transit improvements, including one dedicated transit lane, bus stop improvements, and transit signal priority enhancements. A dedicated bike infrastructure in the form of Class II or Class IV bike lanes will be added, along with pedestrian enhancements that include curb extensions, corner bulb-outs, and refuge islands. This project will likely decrease VMT. The funds will be used for the project's construction phase. The City has four other projects funded through this program, with 38% of the funds expended on each project at a different phase of development. One project is in close-out audit, another in the PS&E phase, with the last two in funding agreement execution.

### *LA City*

- Program an additional \$1,000,000 and reprogram all previously approved funds for MM4801.08 - Brentwood Walkability Enhancements (San Vicente Blvd: Bundy to Bringham). The funds are programmed as follows: \$568 in FY 24, \$335,729 in FY 25, \$2,225,000 in FY 26, and \$1,000,000 in FY 27 for a revised total grant of \$3,561,297. This project will provide new pedestrian amenities, including upgraded curb ramps, upgraded medians, curb extensions, signalized crosswalks, speed feedback signs, additional street furniture, new street trees and landscaping, and an upgraded Class II bike lane. This project will likely decrease VMT. The funds will be used for the project's Plans, Specifications, and Estimates (PS&E) and construction phases.
- Program an additional \$1,313,632 for MM4801.10 - Expo Bike Path Gap Closure. The funds are programmed as follows: \$3,168,000 in FY 26 and \$1,313,632 in FY 28 with a revised total grant of \$4,481,632. This project will install a 1.44-mile bike path (Class I bicycle facility) in the City of Los Angeles. This project will connect the endpoints of the existing Expo Bike Path, closely following the Expo Light Rail right-of-way and Northvale Road. This project will likely decrease VMT. The funds will be used for the project's construction phase.
- The City has three projects funded by this program with 3% complete thus far and all in the PS&E phase. Two new projects will start this year.

### **DETERMINATION OF SAFETY IMPACT**

Programming of Measure M MSP funds to the Subregion projects will not have any adverse safety impacts on Metro's employees or patrons. The recommended projects will result in improved safety for pedestrians, bicyclists and people accessing transit.

### **FINANCIAL IMPACT**

---

In FY 26, \$15.01 million is budgeted in Cost Center 0441 (subsidies budget - Planning) for the Active Transportation Program (Project #474401). Upon approval of this action, staff will reallocate necessary funds to appropriate projects within Cost Center 0441. Since these are multi-year projects, Cost Center 0441 will be responsible for budgeting the cost in future years.

### Impact to Budget

The sources of funds for these projects are Measure M Highway Construction 17%. This fund source is not eligible for Metro bus and rail operations expenses.

### EQUITY PLATFORM

The Westside Cities Subregion comprises five cities and the adjacent unincorporated area of Los Angeles County. Seven percent of census tracts in the subregion are defined as Equity Focus Communities (EFCs). Cities within the subregion where most census tracts are EFCs include City of LA and West Hollywood. As part of this report, the Expo Bike Path Gap Closure is located near the communities with EFCs.

Metro staff provide technical assistance to jurisdictions, assisting agencies in determining funding eligibility and developing funding agreements, including project scope of work, cost and schedule. Each city and/or agency, independently and in coordination with the subregion, undertakes their jurisdictionally determined community engagement process specific to the type of transportation improvement they seek to develop. These locally determined and prioritized projects represent the needs of cities and the subregion.

### VEHICLE MILES TRAVELED OUTCOME

VMT and VMT per capita in Los Angeles County are lower than national averages, the lowest in the SCAG region, and on the lower end of VMT per capita statewide, with these declining VMT trends due in part to Metro's significant investment in rail and bus transit.\* Metro's Board-adopted VMT reduction targets align with California's statewide climate goals, including achieving carbon neutrality by 2045. To ensure continued progress, all Board items are assessed for their potential impact on VMT.

While the agency remains committed to reducing VMT through transit and multimodal investments, some projects may induce or increase personal vehicle travel. However, these individual projects aim to ensure the efficient and safe movement of people and goods. Each project's VMT outcome is included in the brief project description earlier in this report. This Board item, which looks at a number of smaller investments across modes, will likely decrease VMT in LA County.

Although this item may not directly contribute to the achievement of the Board-adopted VMT Reduction Targets, the VMT Targets were developed to account for the cumulative effect of a suite of programs and projects within the Metro region, which individually may induce or increase VMT. Additionally, Metro has a voter-approved mandate to deliver multimodal projects that enhance mobility while ensuring the efficient and safe movement of people and goods.

---

\*Based on population estimates from the United States Census and VMT estimates from Caltrans' Highway Performance Monitoring System (HPMS) data between 2001-2019.

## **IMPLEMENTATION OF STRATEGIC PLAN GOALS**

The recommendation supports the following goals of the Metro Vision 2028 Strategic Plan:

Goal 1: Provide high-quality mobility options that enable people to spend less time traveling by alleviating the current operational deficiencies and improving mobility along the projects.

Goal 4: Transform LA County through regional collaboration by partnering with the Council of Governments and the local jurisdictions to identify the needed improvements and take the lead in developing and implementing their projects.

## **ALTERNATIVES CONSIDERED**

The Board could elect not to approve the additional programming of funds for the Measure M MSP projects for the Subregion. This is not recommended as the Subregion developed the proposed projects in accordance with the Measure M Ordinance, Guidelines, and Administrative Procedures which may delay the development and delivery of the projects.

## **NEXT STEPS**

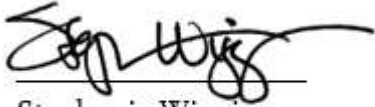
Metro staff will continue to work with the Subregion to identify and deliver projects. Funding Agreements will be executed with those who have funds programmed in FY 26. Program/Project updates will be provided to the Board annually.

## **ATTACHMENTS**

Attachment A - Active Transportation 1<sup>st</sup>/Last Mile Connection Program Project List  
Attachment B - Subregional Equity Program Project List

Prepared by: Fanny Pan, Executive Officer, Countywide Planning & Development, (213) 418-3433  
Laurie Lombardi, Senior Executive Officer, Countywide Planning & Development, (213) 418-3251  
Nicole Ferrara, Deputy Chief Planning Officer, (213) 547-4322

Reviewed by: Ray Sosa, Chief Planning Officer, (213) 547-4274

A handwritten signature in black ink, appearing to read 'Step Wiggins', written over a horizontal line.

Stephanie Wiggins  
Chief Executive Officer

Measure M Multi-Year Subregional Plan - Active Transportation First/Last Mile Connection Program (Expenditure Line 51)

	Agency	Project ID No.	Project/Location	Funding Phases	Note	Prior Allocation	Allocation Change	Current Allocation	Prior Years Programming	FY2024-25	FY2025-26	FY2026-27	FY2027-28	FY2028-29
1	WSCCOG	MM4801.01	Planning Activities for Measure M Multi-Year Subregional Program ^	Planning Development		\$ 270,237		\$ 270,237	\$ 94,989	\$ 84,415	\$ 45,833	\$ 45,000		
2	Beverly Hills	MM4801.02/ MM4801.03/ MM4801.04	La Cienega & Rodeo Drive Purple Line Stations - Pedestrian and Wayfinding FLM Improvements	Construction		2,973,186		2,973,186		2,973,186				
3	Beverly Hills	MM4801.21	D Line Extension FLM - Electric Trolley Service	Equipment/Vehicle	New		1,600,000	1,600,000					800,000	800,000
4	Culver City	MM4801.05	Overland Class II and IV with Pedestrian Improvements	PS&E Construction		842,496		842,496	842,496					
5	Culver City	MM4801.06	Microtransit/First Last Mile Service Program	Equipment/Vehicle		100,000		100,000			100,000			
6	Culver City	MM4801.07	Washington Transit/Mobility Lanes + Circulator/First-Last Mile Service Program	PS&E Equipment/Vehicle Construction	Audit	742,495		742,495	742,495					
7	Culver City	MM4801.17	Sepulveda Corridor Mobility Lane Project	Construction	Chg	798,364	1,160,121	1,958,485		798,364			1,160,121	
8	Culver City	MM4801.19	Move Culver City Eastern Segment Project	Construction		620,302		620,302		620,302				
9	LA City	MM4801.08	Brentwood Walkability Enhancements (San Vicente Blvd: Bundy to Bringham)	PS&E Construction	Chg	2,561,297	1,000,000	3,561,297	568	335,729	2,225,000	1,000,000		
10	LA City	MM4801.09	Connect Del Rey Stress-Free Bicycle Enhanced Corridor	PS&E Construction		6,212,768		6,212,768	878,768	3,515,070	1,818,930			
11	LA City	MM4801.10	Expo Bike Path Gap Closure	Construction	Chg	3,168,000	1,313,632	4,481,632			3,168,000		1,313,632	
12	LA City	MM4801.11	Santa Monica to Westwood Stress-Free Bicycle Enhanced Corridor	PS&E Construction		10,406,584		10,406,584	1,681,317	6,725,267	2,000,000			
13	LA City	MM4801.20	Westwood Boulevard Safety and Mobility Project	PS&E Construction		9,600,000		9,600,000			1,600,000		8,000,000	
14	Santa Monica	MM4801.12	Broadway Protected Bikeway: 5th Street - 26th Street	PS&E Construction		1,311,471		1,311,471	361,709	68,291	281,471	600,000		
15	Santa Monica	MM4801.13	Colorado Protected Bikeway: 5th Street - 17th Street	PS&E Construction		500,000		500,000	500,000					
16	Santa Monica	MM4801.14	Stewart & Pennsylvania Safety Enhancement Project	Construction		804,000		804,000	804,000					
17	Santa Monica	MM4801.15	Wilshire Active Transportation Safety Project	PS&E Construction		3,062,589		3,062,589	234,250	861,750	966,589	1,000,000		
18	West Hollywood	MM4801.16	Willoughby, Vista, Gardner Greenways	PS&E		1,136,403		1,136,403			250,000	195,905	690,498	
19	West Hollywood	MM4801.18	Fountain Ave Protected Bike Lanes	PS&E		1,785,160		1,785,160	1,211,000	574,160				
<b>Total Programming Amount</b>						<b>\$ 46,895,352</b>	<b>\$ 5,073,753</b>	<b>\$ 51,969,105</b>	<b>\$ 7,351,592</b>	<b>\$ 16,556,534</b>	<b>\$ 12,455,823</b>	<b>\$ 2,840,905</b>	<b>\$ 11,964,251</b>	<b>\$ 800,000</b>

^ Subregion Planning Activities (0.5%) for Measure M Multi-Year Subregional Program.

**Westside Cities Subregion  
Measure M Multi-Year Subregional Plan - Subregional Equity Program (Expenditure Line 68)**

	Agency	Project ID No.	Project/Location	Funding Phases	Note	Prior Alloc	Alloc Change	Current Alloc	FY 2024-25	FY 2025-26	FY 2026-27	FY 2027-28	FY 2028-29
1	WSSCOG	MM4801.01	Planning Activities for Measure M Multi-Year Subregional Program ^	Planning Development		\$ 33,445		\$ 33,445	\$ 13,378	\$ 6,689	\$ 6,689	\$ 6,689	
2	WSSCOG	MW4511.01	2028 Westside Subregional Bus Infrastructure Network	PS&E Construction		1,714,932		1,714,932 *		1,286,199	428,733		
3	Culver City	MW4511.02	2028 Westside Subregional Bus Infrastructure Network	PS&E		960,654		960,654		720,490	240,164		
<b>Total Programming Amount</b>						<b>2,709,031</b>	<b>\$ -</b>	<b>\$2,709,031</b>	<b>\$ 13,378</b>	<b>\$2,013,378</b>	<b>\$ 675,586</b>	<b>\$ 6,689</b>	<b>\$ -</b>

^ Subregion Planning Activities (0.5%) for Measure M Multi-Year Subregional Program.

\* Includes funding advancement of \$500,000 to the WSSCOG.



# Measure M Multi-year Subregional Program Westside Cities Subregion

Planning and Programming Committee  
October 15, 2025



**Metro**

File# 2025-0817

# Westside Cities Subregion

- Two Multi-Year Subregional Programs (MSP)
  - Active Transportation 1<sup>st</sup>/Last Mile Connections Program (expenditure line 51)
  - Suregional Equity Program (expenditure line 68)
- Limited to Capital projects
  - Environmental Phase and forward

## Los Angeles County Transportation Expenditure Plan

(2015 \$ in thousands)

## ATTACHMENT A Groundbreaking Sequence (Exceptions Noted)

For Reference Only	Project (Final Project to be Defined by the Environmental Process)	Notes	Schedule of Funds Available		Subregion <sup>1</sup>	2016 - 2067 Local, State, Federal, Other Funding 2015\$	Measure M Funding 2015\$	Most Recent Cost Estimate 2015\$**	Modal Code
			Ground-breaking Start Date*	Expected Opening Date (3 year range)					
	<b>Multi-Year Subregional Programs</b>		1 <sup>st</sup> yr of Range						
47	Metro Active Transport, Transit 1st/Last Mile Program	p	FY 2018	FY 2057	sc	\$0	\$857,500	\$857,500	H
48	Visionary Project Seed Funding	k,p	FY 2018	FY 2057	sc	\$0	\$20,000	\$20,000	T
49	Street Car and Circulator Projects		FY 2018	FY 2022	sc	\$0	\$35,000	\$35,000	T
50	Transportation System and Mobility Improve. Program		FY 2018	FY 2032	sb	\$0	\$293,500	\$293,500	H
51	Active Transportation 1st/Last Mile Connections Prog.		FY 2018	FY 2057	w	\$0	\$361,000	\$361,000	H
52	Active Transportation Program		FY 2018	FY 2057	nc	\$0	\$264,000	\$264,000	H
53	Active Transportation Program		FY 2018	FY 2057	gc	\$0	TBD	TBD	H
54	Active Transportation Program (Including Greenway Proj.)		FY 2018	FY 2057	sg	\$0	\$231,000	\$231,000	H
55	Active Transportation, 1st/Last Mile, & Mobility Hubs		FY 2018	FY 2057	cc	\$0	\$215,000	\$215,000	H
56	Active Transportation, Transit, and Tech. Program		FY 2018	FY 2032	vm	\$0	\$32,000	\$32,000	T
57	Highway Efficiency Program		FY 2018	FY 2032	vm	\$0	\$133,000	\$133,000	H
58	Bus System Improvement Program		FY 2018	FY 2057	sg	\$0	\$65,000	\$65,000	T
59	First/Last Mile and Complete Streets		FY 2018	FY 2057	sg	\$0	\$198,000	\$198,000	H
60	Highway Demand Based Prog. (HOV Ext. & Connect.)		FY 2018	FY 2057	sg	\$0	\$231,000	\$231,000	H
61	I-805 Corridor "Hot Spot" Interchange Improvements @		FY 2018	FY 2057	gc	\$240,000	\$1,000,000	\$1,240,000	H
62	Modal Connectivity and Complete Streets Projects		FY 2018	FY 2057	av	\$0	\$202,000	\$202,000	H
63	South Bay Highway Operational Improvements		FY 2018	FY 2057	sb	\$600,000	\$500,000	\$1,100,000	H
64	Transit Program		FY 2018	FY 2057	nc	\$500,000	\$88,000	\$588,000	T
65	Transit Projects		FY 2018	FY 2057	av	\$0	\$257,100	\$257,100	T
66	Transportation System and Mobility Improve. Program		FY 2018	FY 2057	sb	\$0	\$350,000	\$350,000	H
67	North San Fernando Valley Bus Rapid Transit Improvements	p,s	FY 2019	FY 2023	sc	\$0	\$180,000	\$180,000	T
68	<b>Subregional Equity Program</b>	p,s	FY 2018	FY 2057	sc	TBD	TBD	\$1,196,000	T/H
69	Countywide BRT Projects Ph 1 (All Subregions)	l,p	FY 2020	FY 2022	sc	\$0	\$50,000	\$50,000	T
70	Countywide BRT Projects Ph 2 (All Subregions)	l,p	FY 2030	FY 2032	sc	\$0	\$50,000	\$50,000	T
71	Active Transportation Projects		FY 2033	FY 2057	av	\$0	\$136,500	\$136,500	H
72	Los Angeles Safe Routes to School Initiative		FY 2033	FY 2057	cc	\$0	\$250,000	\$250,000	H
73	Multimodal Connectivity Program		FY 2033	FY 2057	nc	\$0	\$239,000	\$239,000	H
74	Countywide BRT Projects Ph 3 (All Subregions)	l,p	FY 2040	FY 2042	sc	\$0	\$50,000	\$50,000	T
75	Arterial Program		FY 2048	FY 2057	nc	\$0	\$726,130	\$726,130	H
76	BRT and 1st/Last Mile Solutions e.g. DASH		FY 2048	FY 2057	cc	\$0	\$250,000	\$250,000	T
77	Freeway Interchange and Operational Improvements		FY 2048	FY 2057	cc	\$0	\$195,000	\$195,000	H
78	Goods Movement (Improvements & RR Xing Elim.)		FY 2048	FY 2057	sg	\$0	\$33,000	\$33,000	T
79	Goods Movement Program		FY 2048	FY 2057	nc	\$0	\$104,000	\$104,000	T
80	Goods Movement Projects		FY 2048	FY 2057	av	\$0	\$81,700	\$81,700	T
81	Highway Efficiency Program		FY 2048	FY 2057	nc	\$0	\$128,870	\$128,870	H
82	Highway Efficiency Program		FY 2048	FY 2057	sg	\$0	\$534,000	\$534,000	H
83	Highway Efficiency, Noise Mitig. and Arterial Projects		FY 2048	FY 2057	av	\$0	\$602,800	\$602,800	H
84	ITS/Technology Program (Advanced Signal Tech.)		FY 2048	FY 2057	sg	\$0	\$66,000	\$66,000	H
85	LA Streetscape Enhance. & Great Streets Program		FY 2048	FY 2057	cc	\$0	\$450,000	\$450,000	H
86	Modal Connectivity Program		FY 2048	FY 2057	vm	\$0	\$68,000	\$68,000	H
87	Public Transit State of Good Repair Program		FY 2048	FY 2057	cc	\$0	\$402,000	\$402,000	T
88	Traffic Congestion Relief and Improvement Program		FY 2048	FY 2057	vm	\$0	\$63,000	\$63,000	H
89	Traffic Congestion Relief/Signal Synchronization		FY 2048	FY 2057	cc	\$0	\$50,000	\$50,000	H
90	Arroyo Verdugo Projects to be Determined		FY 2048	FY 2057	av	\$0	\$110,600	\$110,600	H
91	Countywide BRT Projects Ph 4 (All Subregions)	p	FY 2050	FY 2052	sc	\$90,000	\$10,000	\$100,000	T
92	Countywide BRT Projects Ph 5 (All Subregions)	p	FY 2060	FY 2062	sc	\$0	\$100,000	\$100,000	T
93	<b>Multi-Year Subregional Programs Subtotal</b>					\$1,430,000	\$10,253,700	\$12,879,700	
94	<b>GRAND TOTAL</b>					\$21,011,027	\$31,243,641	\$53,450,669	

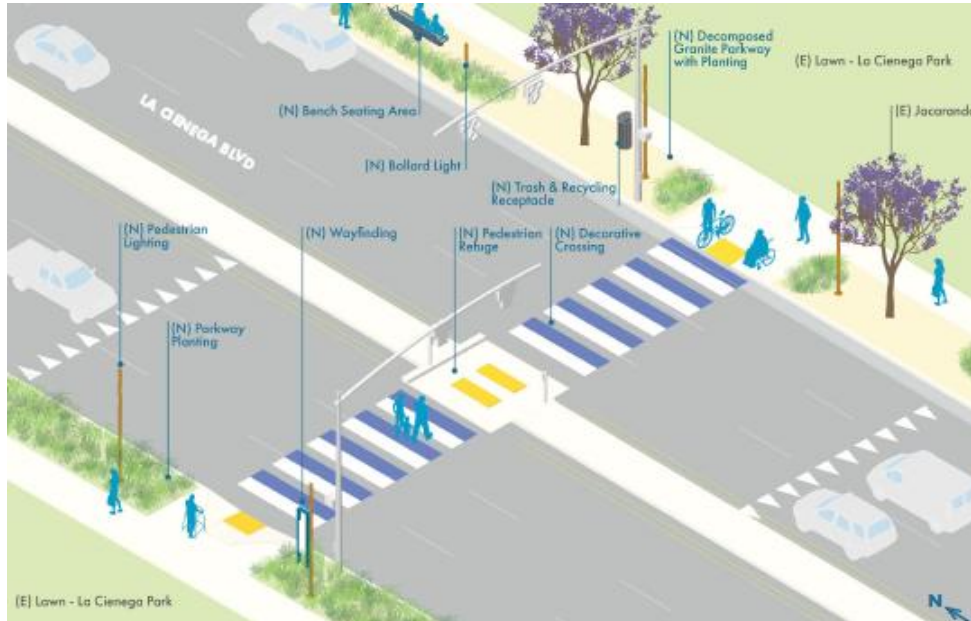
# October 2025 Recommendations

## CONSIDER:

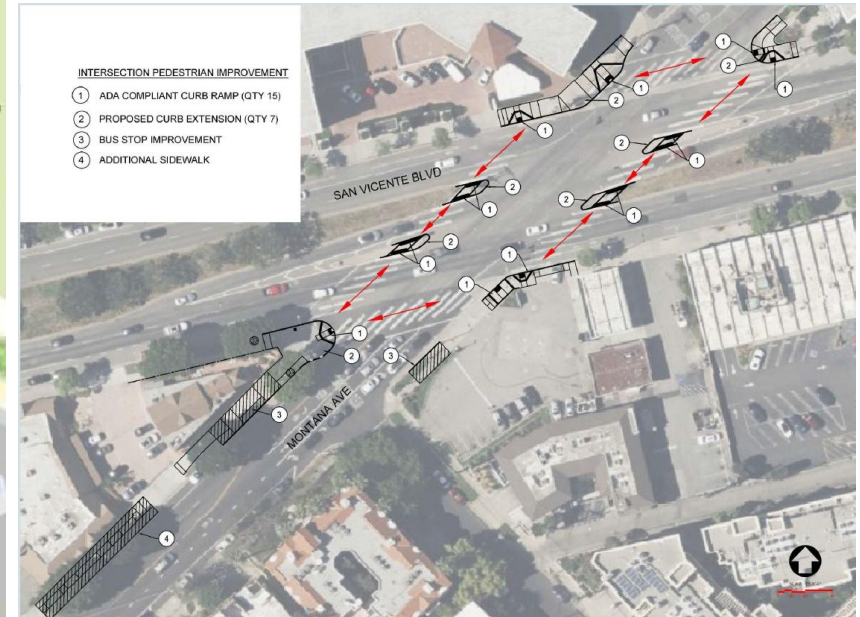
- A. APPROVING programming an additional \$5,073,753 within the capacity of Measure M Multi-Year Subregional Program (MSP) – Active Transportation 1st/Last Mile Connections Program (Expenditure Line 51), as shown in Attachment A; and
- B. AUTHORIZING the Chief Executive Officer (CEO) or their designee to negotiate and execute all necessary agreements for approved projects.

# Recommended Projects

- This update includes funding adjustments to two existing Active Transportation, one existing and one new First/Last Mile projects.
- Approximately 5 projects are expected to be completed by the 2028 Games.



Beverly Hills La Cienega FLM Project



City of LA Brentwood Walkability Enhancement Project

\* Images are for illustrative purposes only.

# Next Steps

- Execute Funding Agreements with the implementing agencies to initiate projects
- Continue working with the Subregion to identify and deliver projects
- Return to the Board annually for Program/Project updates